



# Network Theory

**tutorialspoint**

S I M P L Y E A S Y L E A R N I N G

[www.tutorialspoint.com](http://www.tutorialspoint.com)



<https://www.facebook.com/tutorialspointindia>



<https://twitter.com/tutorialspoint>

## About the Tutorial

---

This tutorial is meant to provide the readers the know-how to analyze and solve any electric circuit or network. After completing this tutorial, you will understand the laws and methods that can be applied to specific electric circuits and networks.

## Audience

---

This tutorial is meant for all the readers who are aspiring to learn the concepts of Network Theory. In some universities, this subject is also called as "Network Analysis & Circuit Theory."

## Prerequisites

---

There are no major prerequisites to understand the concepts discussed in this tutorial. Once you are through with the first few chapters, you will be quite at ease with the methods and concepts of DC circuits and AC circuits, discussed in later chapters.

## Copyright & Disclaimer

---

© Copyright 2017 by Tutorials Point (I) Pvt. Ltd.

All the content and graphics published in this e-book are the property of Tutorials Point (I) Pvt. Ltd. The user of this e-book is prohibited to reuse, retain, copy, distribute or republish any contents or a part of contents of this e-book in any manner without written consent of the publisher.

We strive to update the contents of our website and tutorials as timely and as precisely as possible, however, the contents may contain inaccuracies or errors. Tutorials Point (I) Pvt. Ltd. provides no guarantee regarding the accuracy, timeliness or completeness of our website or its contents including this tutorial. If you discover any errors on our website or in this tutorial, please notify us at [contact@tutorialspoint.com](mailto:contact@tutorialspoint.com)

## Table of Contents

---

<b>About the Tutorial</b> .....	i
<b>Audience</b> .....	i
<b>Prerequisites</b> .....	i
<b>Copyright &amp; Disclaimer</b> .....	i
<b>Table of Contents</b> .....	ii
<b>1. NETWORK THEORY – OVERVIEW</b> .....	<b>1</b>
<b>Basic Terminology</b> .....	<b>1</b>
<b>Types of Network Elements</b> .....	<b>2</b>
<b>2. NETWORK THEORY – EXAMPLE PROBLEMS</b> .....	<b>4</b>
<b>3. NETWORK THEORY – ACTIVE ELEMENTS</b> .....	<b>6</b>
<b>Independent Sources</b> .....	<b>6</b>
<b>Dependent Sources</b> .....	<b>8</b>
<b>Source Transformation Technique</b> .....	<b>9</b>
<b>4. NETWORK THEORY – PASSIVE ELEMENTS</b> .....	<b>11</b>
<b>Resistor</b> .....	<b>11</b>
<b>Inductor</b> .....	<b>12</b>
<b>Capacitor</b> .....	<b>13</b>
<b>5. NETWORK THEORY – KIRCHHOFF’S LAWS</b> .....	<b>15</b>
<b>Kirchhoff’s Current Law</b> .....	<b>15</b>
<b>Kirchhoff’s Voltage Law</b> .....	<b>16</b>
<b>6. NETWORK THEORY – ELECTRICAL QUANTITY DIVISION PRINCIPLES</b> .....	<b>18</b>
<b>Current Division Principle</b> .....	<b>18</b>
<b>Voltage Division Principle</b> .....	<b>19</b>

7.	NETWORK THEORY – NODAL ANALYSIS .....	21
	<b>Procedure of Nodal Analysis</b> .....	<b>21</b>
8.	NETWORK THEORY – MESH ANALYSIS .....	24
	<b>Procedure of Mesh Analysis</b> .....	<b>24</b>
9.	NETWORK THEORY – EQUIVALENT CIRCUITS.....	27
	<b>Series Equivalent Circuit</b> .....	<b>27</b>
	<b>Parallel Equivalent Circuit</b> .....	<b>28</b>
10.	EQUIVALENT CIRCUITS – EXAMPLE PROBLEM .....	30
11.	NETWORK THEORY – DELTA TO STAR CONVERSION .....	33
	<b>Delta Network</b> .....	<b>33</b>
	<b>Star Network</b> .....	<b>34</b>
	<b>Star Network Resistances in terms of Delta Network Resistances</b> .....	<b>34</b>
12.	NETWORK THEORY – STAR TO DELTA CONVERSION .....	37
	<b>Delta Network Resistances in terms of Star Network Resistances</b> .....	<b>37</b>
13.	NETWORK THEORY – NETWORK TOPOLOGY .....	40
	<b>Basic Terminology of Network Topology</b> .....	<b>40</b>
	<b>Types of Graphs</b> .....	<b>41</b>
14.	NETWORK THEORY – NETWORK TOPOLOGY MATRICES .....	46
	<b>Matrices Associated with Network Graphs</b> .....	<b>46</b>
15.	NETWORK THEORY – SUPERPOSITION THEOREM.....	52
	<b>Procedure of Superposition Theorem</b> .....	<b>52</b>
16.	NETWORK THEORY – THEVENIN’S THEOREM .....	56
	<b>Methods of Finding Thevenin’s Equivalent Circuit</b> .....	<b>57</b>

17. NETWORK THEORY – NORTON’S THEOREM .....	61
<b>Methods of Finding Norton’s Equivalent Circuit .....</b>	<b>62</b>
18. NETWORK THEORY – MAXIMUM POWER TRANSFER THEOREM .....	66
<b>Proof of Maximum Power Transfer Theorem .....</b>	<b>66</b>
<b>Efficiency of Maximum Power Transfer .....</b>	<b>68</b>
19. NETWORK THEORY – RESPONSE OF DC CIRCUITS.....	71
<b>Transient Response .....</b>	<b>71</b>
<b>Steady state Response .....</b>	<b>72</b>
<b>Finding the Response of Series RL Circuit .....</b>	<b>73</b>
20. NETWORK THEORY – RESPONSE OF AC CIRCUITS.....	76
<b>Finding the Response of Series RL Circuit .....</b>	<b>76</b>
21. NETWORK THEORY – SERIES RESONANCE .....	79
<b>Series Resonance Circuit Diagram .....</b>	<b>79</b>
<b>Parameters &amp; Electrical Quantities at Resonance.....</b>	<b>80</b>
22. NETWORK THEORY – PARALLEL RESONANCE .....	83
<b>Parallel Resonance Circuit Diagram .....</b>	<b>83</b>
<b>Parameters &amp; Electrical Quantities at Resonance.....</b>	<b>84</b>
23. NETWORK THEORY – COUPLED CIRCUITS.....	87
<b>Classification of Coupling .....</b>	<b>87</b>
24. NETWORK THEORY – TWO-PORT NETWORKS .....	92
<b>Two Port Network Parameters.....</b>	<b>93</b>
25. NETWORK THEORY – TWO-PORT PARAMETER CONVERSIONS .....	97
<b>Procedure of two port parameter conversions.....</b>	<b>97</b>
26. NETWORK THEORY – FILTERS .....	104
<b>Types of Filters .....</b>	<b>104</b>

# 1. Network Theory – Overview

**Network theory** is the study of solving the problems of electric circuits or electric networks. In this introductory chapter, let us first discuss the basic terminology of electric circuits and the types of network elements.

## Basic Terminology

---

In Network Theory, we will frequently come across the following terms:

- Electric Circuit
- Electric Network
- Current
- Voltage
- Power

So, it is imperative that we gather some basic knowledge on these terms before proceeding further. Let's start with Electric Circuit.

### Electric Circuit

An electric circuit contains a closed path for providing a flow of electrons from a voltage source or current source. The elements present in an electric circuit will be in **series connection**, **parallel connection**, or in any combination of series and parallel connections.

### Electric Network

An electric network need not contain a closed path for providing a flow of electrons from a voltage source or current source. Hence, we can conclude that "all electric circuits are electric networks" but the converse need not be true.

### Current

The current "**I**" flowing through a conductor is nothing but the time rate of flow of charge. Mathematically, it can be written as

$$I = \frac{dQ}{dt}$$

Where,

- **Q** is the charge and its unit is Coloumb.
- **t** is the time and its unit is second.

As an analogy, electric current can be thought of as the flow of water through a pipe. Current is measured in terms of **Ampere**.

In general, **Electron current** flows from negative terminal of source to positive terminal, whereas, **Conventional current** flows from positive terminal of source to negative terminal.

**Electron current** is obtained due to the movement of free electrons, whereas, **Conventional current** is obtained due to the movement of free positive charges. Both of these are called as **electric current**.

## Voltage

The voltage "V" is nothing but an electromotive force that causes the charge (electrons) to flow. Mathematically, it can be written as

$$V = \frac{dW}{dQ}$$

Where,

- **W** is the potential energy and its unit is Joule.
- **Q** is the charge and its unit is Coloumb.

As an analogy, Voltage can be thought of as the pressure of water that causes the water to flow through a pipe. It is measured in terms of **Volt**.

## Power

The power "P" is nothing but the time rate of flow of electrical energy. Mathematically, it can be written as

$$P = \frac{dW}{dt}$$

Where,

- **W** is the electrical energy and it is measured in terms of **Joule**.
- **t** is the time and it is measured in seconds.

We can re-write the above equation as

$$P = \frac{dW}{dt} = \frac{dW}{dQ} \times \frac{dQ}{dt} = VI$$

Therefore, **power** is nothing but the **product** of voltage **V** and current **I**. Its unit is **Watt**.

## Types of Network Elements

---

We can classify the Network elements into various types based on some parameters. Following are the types of Network elements:

- Active Elements and Passive Elements
- Linear Elements and Non-linear Elements
- Bilateral Elements and Unilateral Elements

### Active Elements and Passive Elements

We can classify the Network elements into either **active** or **passive** based on the ability of delivering power.

- **Active Elements** deliver power to other elements, which are present in an electric circuit. Sometimes, they may absorb the power like passive elements. That means active elements have the capability of both delivering and absorbing power. **Examples:** Voltage sources and current sources.
- **Passive Elements** can't deliver power (energy) to other elements, however they can absorb power. That means these elements either dissipate power in the form of heat or store energy in the form of either magnetic field or electric field. **Examples:** Resistors, Inductors, and capacitors.

## Linear Elements and Non-Linear Elements

We can classify the network elements as **linear** or **non-linear** based on their characteristic to obey the property of linearity.

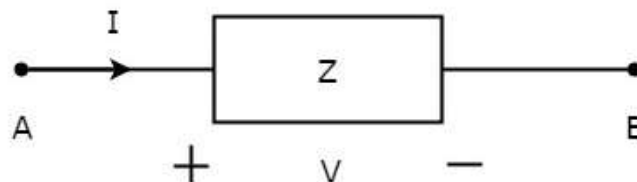
- **Linear Elements** are the elements that show a linear relationship between voltage and current. **Examples:** Resistors, Inductors, and capacitors.
- **Non-Linear Elements** are those that do not show a linear relation between voltage and current. **Examples:** Voltage sources and current sources.

## Bilateral Elements and Unilateral Elements

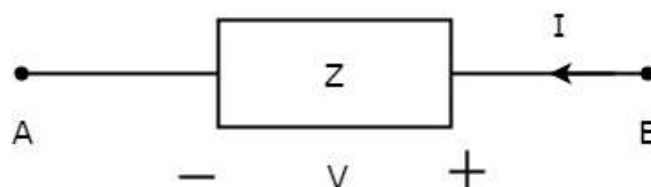
Network elements can also be classified as either **bilateral** or **unilateral** based on the direction of current flows through the network elements.

**Bilateral Elements** are the elements that allow the current in both directions and offer the same impedance in either direction of current flow. **Examples:** Resistors, Inductors and capacitors.

The concept of Bilateral elements is illustrated in the following figures.



In the above figure, the current ( $I$ ) is flowing from terminals A to B through a passive element having impedance of  $Z \Omega$ . It is the ratio of voltage ( $V$ ) across that element between terminals A & B and current ( $I$ ).



In the above figure, the current ( $I$ ) is flowing from terminals B to A through a passive element having impedance of  $Z \Omega$ . That means the current ( $-I$ ) is flowing from terminals A to B. In this case too, we will get the same impedance value, since both the current and voltage having negative signs with respect to terminals A & B.

**Unilateral Elements** are those that allow the current in only one direction. Hence, they offer different impedances in both directions.

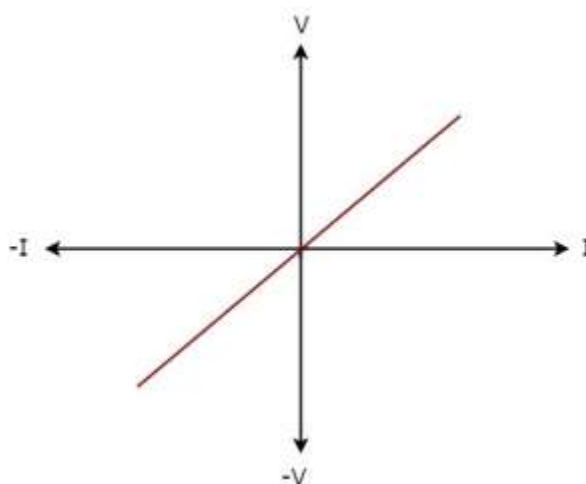


## 2. Network Theory – Example Problems

We discussed the types of network elements in the previous chapter. Now, let us identify the **nature of network elements** from the V-I characteristics given in the following examples.

### Example 1

The **V-I characteristics** of a network element is shown below.



**Step 1:** Verifying the network element as **linear** or **non-linear**.

From the above figure, the V-I characteristics of a network element is a straight line passing through the origin. Hence, it is a **Linear element**.

**Step 2:** Verifying the network element as **active** or **passive**.

The given V-I characteristics of a network element lies in the first and third quadrants.

- In the **first quadrant**, the values of both voltage (V) and current (I) are positive. So, the ratios of voltage (V) and current (I) gives positive impedance values.
- Similarly, in the **third quadrant**, the values of both voltage (V) and current (I) have negative values. So, the ratios of voltage (V) and current (I) produce positive impedance values.

Since, the given V-I characteristics offer positive impedance values, the network element is a **Passive element**.

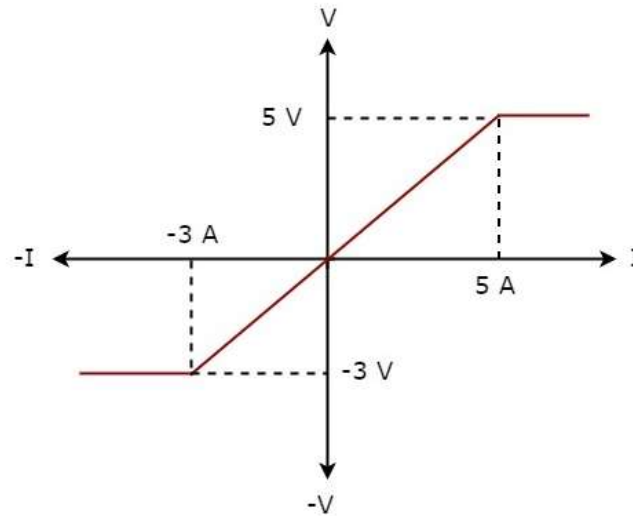
**Step 3:** Verifying the network element as **bilateral** or **unilateral**.

For every point (I, V) on the characteristics, there exists a corresponding point (-I, -V) on the given characteristics. Hence, the network element is a **Bilateral element**.

Therefore, the given V-I characteristics show that the network element is a **Linear**, **Passive**, and **Bilateral element**.

## Example 2

The **V-I characteristics** of a network element is shown below.



**Step 1:** Verifying the network element as **linear** or **non-linear**.

From the above figure, the V-I characteristics of a network element is a straight line only between the points  $(-3\text{A}, -3\text{V})$  and  $(5\text{A}, 5\text{V})$ . Beyond these points, the V-I characteristics are not following the linear relation. Hence, it is a **Non-linear element**.

**Step 2:** Verifying the network element as **active** or **passive**.

The given V-I characteristics of a network element lies in the first and third quadrants. In these two quadrants, the ratios of voltage (V) and current (I) produce positive impedance values. Hence, the network element is a **Passive element**.

**Step 3:** Verifying the network element as **bilateral** or **unilateral**.

Consider the point  $(5\text{A}, 5\text{V})$  on the characteristics. The corresponding point  $(-5\text{A}, -3\text{V})$  exists on the given characteristics instead of  $(-5\text{A}, -5\text{V})$ . Hence, the network element is a **Unilateral element**.

Therefore, the given V-I characteristics show that the network element is a **Non-linear**, **Passive**, and **Unilateral element**.

# 3. Network Theory – Active Elements

**Active Elements** are the network elements that deliver power to other elements present in an electric circuit. So, active elements are also called as sources of voltage or current type. We can classify these sources into the following two categories:

- Independent Sources
- Dependent Sources

## Independent Sources

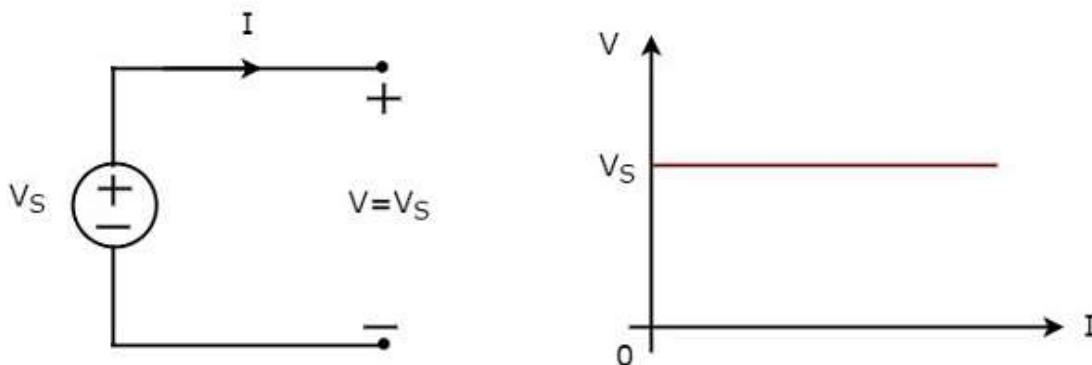
As the name suggests, independent sources produce fixed values of voltage or current and these are not dependent on any other parameter. Independent sources can be further divided into the following two categories:

- Independent Voltage Sources
- Independent Current Sources

### Independent Voltage Sources

An independent voltage source produces a constant voltage across its two terminals. This voltage is independent of the amount of current that is flowing through the two terminals of voltage source.

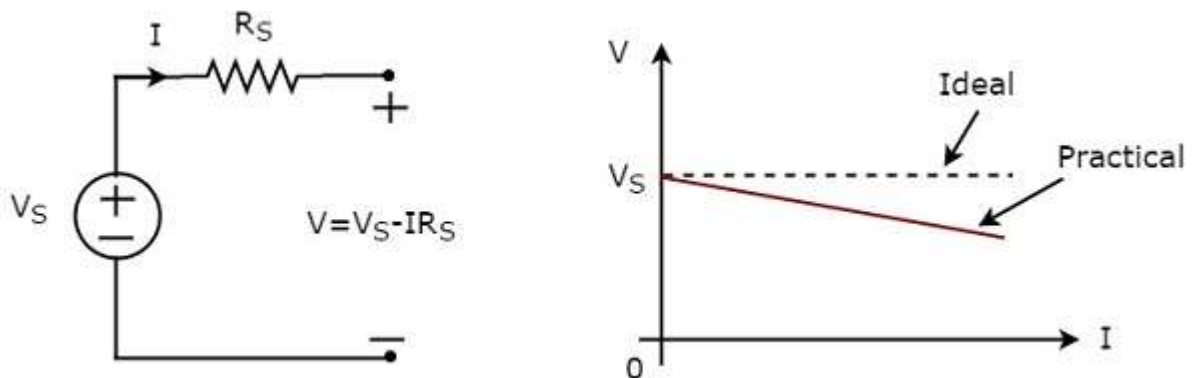
Independent **ideal voltage source** and its V-I characteristics are shown in the following figure.



The **V-I characteristics** of an independent ideal voltage source is a constant line, which is always equal to the source voltage ( $V_S$ ) irrespective of the current value ( $I$ ). So, the internal resistance of an independent ideal voltage source is zero Ohms.

Hence, the independent ideal voltage sources **do not exist practically**, because there will be some internal resistance.

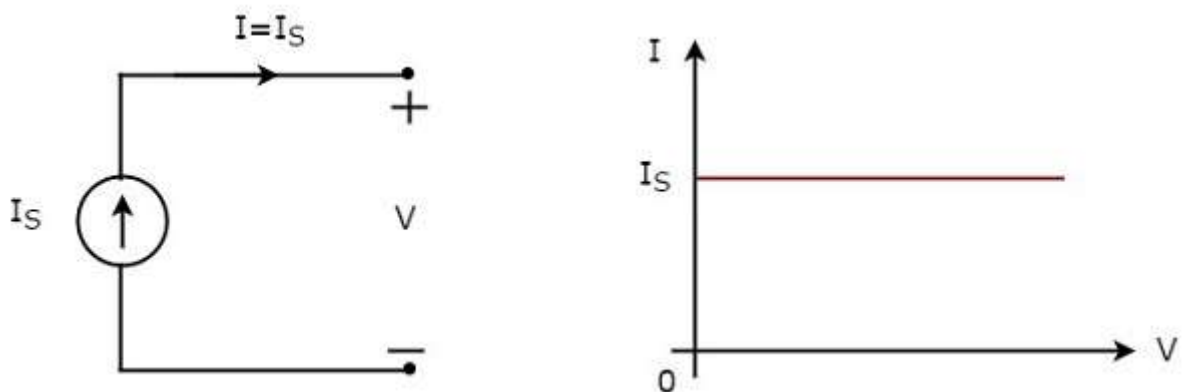
Independent **practical voltage source** and its V-I characteristics are shown in the following figure.



There is a deviation in the V-I characteristics of an independent practical voltage source from the V-I characteristics of an independent ideal voltage source. This is due to the voltage drop across the internal resistance ( $R_S$ ) of an independent practical voltage source.

### Independent Current Sources

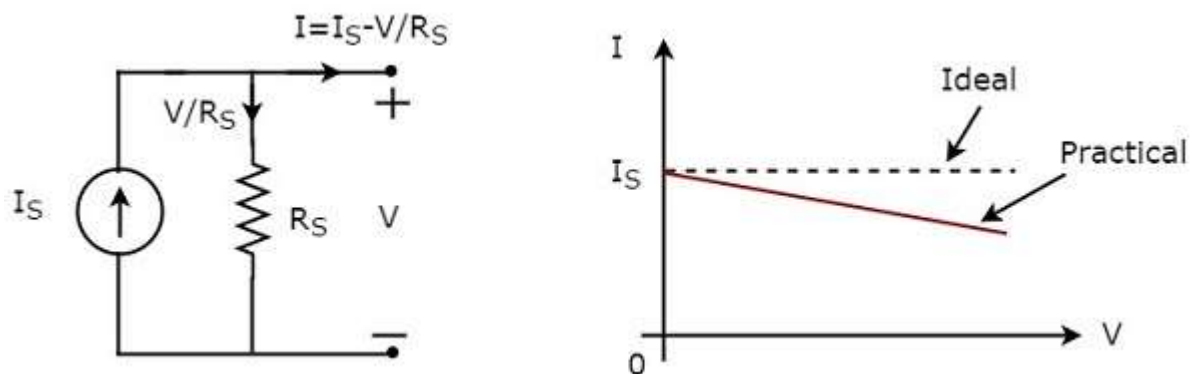
An independent current source produces a constant current. This current is independent of the voltage across its two terminals. Independent **ideal current source** and its V-I characteristics are shown in the following figure.



The **V-I characteristics** of an independent ideal current source is a constant line, which is always equal to the source current ( $I_S$ ) irrespective of the voltage value ( $V$ ). So, the internal resistance of an independent ideal current source is infinite ohms.

Hence, the independent ideal current sources **do not exist practically**, because there will be some internal resistance.

Independent **practical current source** and its V-I characteristics are shown in the following figure.



There is a deviation in the V-I characteristics of an independent practical current source from the V-I characteristics of an independent ideal current source. This is due to the amount of current flows through the internal shunt resistance ( $R_S$ ) of an independent practical current source.

## Dependent Sources

As the name suggests, dependent sources produce the amount of voltage or current that is dependent on some other voltage or current. Dependent sources are also called as **controlled sources**. Dependent sources can be further divided into the following two categories:

- Dependent Voltage Sources
- Dependent Current Sources

### Dependent Voltage Sources

A dependent voltage source produces a voltage across its two terminals. The amount of this voltage is dependent on some other voltage or current. Hence, dependent voltage sources can be further classified into the following two categories:

- Voltage Dependent Voltage Source (VDVS)
- Current Dependent Voltage Source (CDVS)

Dependent voltage sources are represented with the signs '+' and '-' inside a diamond shape. The magnitude of the voltage source can be represented outside the diamond shape.

### Dependent Current Sources

A dependent current source produces a current. The amount of this current is dependent on some other voltage or current. Hence, dependent current sources can be further classified into the following two categories:

- Voltage Dependent Current Source (VDCCS)
- Current Dependent Current Source (CDCS)

Dependent current sources are represented with an arrow inside a diamond shape. The magnitude of the current source can be represented outside the diamond shape.

We can observe these dependent or controlled sources in equivalent models of transistors.

## Source Transformation Technique

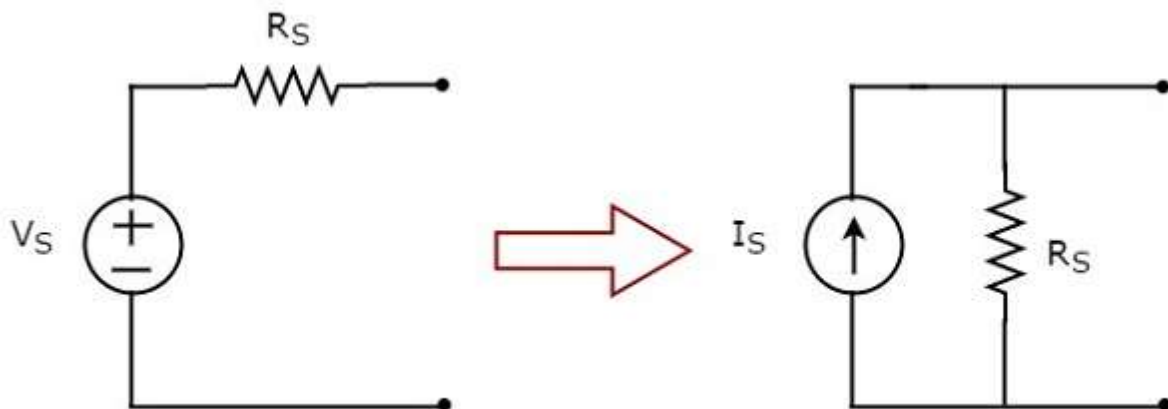
We know that there are two practical sources, namely, **voltage source** and **current source**. We can transform (convert) one source into the other based on the requirement, while solving network problems.

The technique of transforming one source into the other is called as **source transformation technique**. Following are the two possible source transformations:

- Practical voltage source into a practical current source
- Practical current source into a practical voltage source

### Practical voltage source into a practical current source

The transformation of practical voltage source into a practical current source is shown in the following figure.



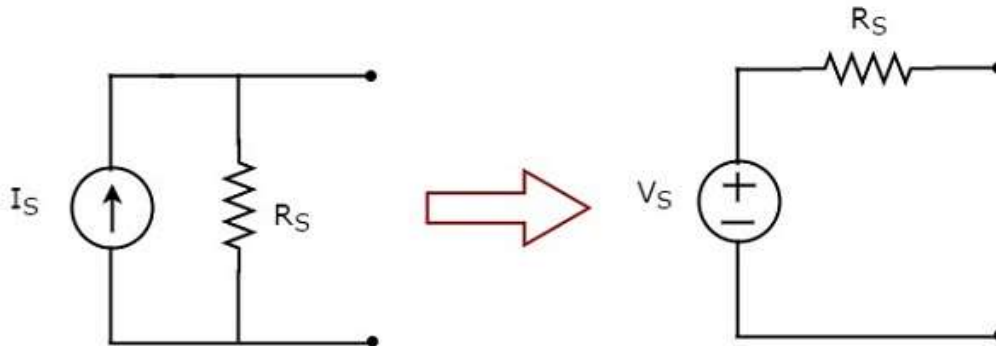
**Practical voltage source** consists of a voltage source ( $V_S$ ) in series with a resistor ( $R_S$ ). This can be converted into a practical current source as shown in the figure. It consists of a current source ( $I_S$ ) in parallel with a resistor ( $R_S$ ).

The value of  $I_S$  will be equal to the ratio of  $V_S$  and  $R_S$ . Mathematically, it can be represented as

$$I_S = \frac{V_S}{R_S}$$

### Practical current source into a practical voltage source

The transformation of practical current source into a practical voltage source is shown in the following figure.



**Practical current source** consists of a current source ( $I_S$ ) in parallel with a resistor ( $R_S$ ). This can be converted into a practical voltage source as shown in the figure. It consists of a voltage source ( $V_S$ ) in series with a resistor ( $R_S$ ).

The value of  $V_S$  will be equal to the product of  $I_S$  and  $R_S$ . Mathematically, it can be represented as

$$V_S = I_S R_S$$

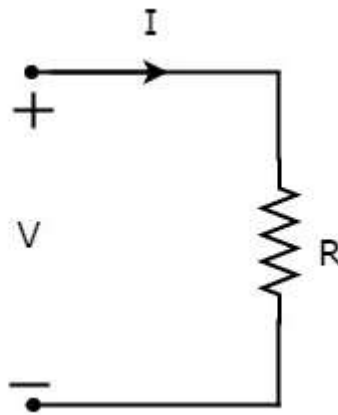
# 4. Network Theory – Passive Elements

In this chapter, we will discuss in detail about the passive elements such as Resistor, Inductor, and Capacitor. Let us start with Resistors.

## Resistor

The main functionality of Resistor is either opposes or restricts the flow of electric current. Hence, the resistors are used in order to limit the amount of current flow and / or dividing (sharing) voltage.

Let the current flowing through the resistor is  $I$  amperes and the voltage across it is  $V$  volts. The **symbol** of resistor along with current,  $I$  and voltage,  $V$  are shown in the following figure.



According to **Ohm's law**, the voltage across resistor is the product of current flowing through it and the resistance of that resistor. **Mathematically**, it can be represented as

$$V = IR \quad \text{Equation 1}$$

$$\Rightarrow I = \frac{V}{R} \quad \text{Equation 2}$$

Where, **R** is the resistance of a resistor.

From Equation 2, we can conclude that the current flowing through the resistor is directly proportional to the applied voltage across resistor and inversely proportional to the resistance of resistor.

**Power** in an electric circuit element can be represented as

$$P = VI \quad \text{Equation 3}$$

Substitute, Equation 1 in Equation 3.

$$P = (IR)I$$
$$\Rightarrow P = I^2 R \quad \text{Equation 4}$$



Substitute, Equation 2 in Equation 3.

$$P = V \left( \frac{V}{R} \right)$$

$$\Rightarrow P = \frac{V^2}{R} \quad \text{Equation 5}$$

So, we can calculate the amount of power dissipated in the resistor by using one of the formulae mentioned in Equations 3 to 5.

## Inductor

In general, inductors will have number of turns. Hence, they produce magnetic flux when current flows through it. So, the amount of total magnetic flux produced by an inductor depends on the current,  $I$  flowing through it and they have linear relationship.

**Mathematically**, it can be written as

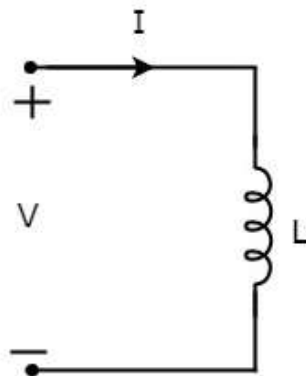
$$\Psi \propto I$$

$$\Rightarrow \Psi = LI$$

Where,

- $\Psi$  is the total magnetic flux
- $L$  is the inductance of an inductor

Let the current flowing through the inductor is  $I$  amperes and the voltage across it is  $V$  volts. The **symbol** of inductor along with current  $I$  and voltage  $V$  are shown in the following figure.



According to **Faraday's law**, the voltage across the inductor can be written as

$$V = \frac{d\Psi}{dt}$$

Substitute  $\Psi = LI$  in the above equation.

$$V = \frac{d(LI)}{dt}$$

$$\Rightarrow V = L \frac{dI}{dt}$$

$$\Rightarrow I = \frac{1}{L} \int V dt$$

From the above equations, we can conclude that there exists a **linear relationship** between voltage across inductor and current flowing through it.

We know that **power** in an electric circuit element can be represented as

$$P = VI$$

Substitute  $V = L \frac{dI}{dt}$  in the above equation.

$$P = \left( L \frac{dI}{dt} \right) I$$

$$\Rightarrow P = LI \frac{dI}{dt}$$

By integrating the above equation, we will get the **energy** stored in an inductor as

$$W = \frac{1}{2} LI^2$$

So, the inductor stores the energy in the form of magnetic field.

## Capacitor

In general, a capacitor has two conducting plates, separated by a dielectric medium. If positive voltage is applied across the capacitor, then it stores positive charge. Similarly, if negative voltage is applied across the capacitor, then it stores negative charge.

So, the amount of charge stored in the capacitor depends on the applied voltage **V** across it and they have linear relationship. Mathematically, it can be written as

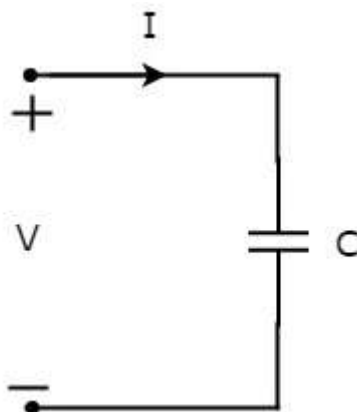
$$Q \propto V$$

$$\Rightarrow Q = CV$$

Where,

- **Q** is the charge stored in the capacitor.
- **C** is the capacitance of a capacitor.

Let the current flowing through the capacitor is **I** amperes and the voltage across it is **V** volts. The symbol of capacitor along with current **I** and voltage **V** are shown in the following figure.



We know that the **current** is nothing but the **time rate of flow of charge**. Mathematically, it can be represented as

$$I = \frac{dQ}{dt}$$

Substitute  $Q = CV$  in the above equation.

$$\begin{aligned} I &= \frac{d(CV)}{dt} \\ \Rightarrow I &= C \frac{dV}{dt} \\ \Rightarrow V &= \frac{1}{C} \int I dt \end{aligned}$$

From the above equations, we can conclude that there exists a **linear relationship** between voltage across capacitor and current flowing through it.

We know that **power** in an electric circuit element can be represented as

$$P = VI$$

Substitute  $I = C \frac{dV}{dt}$  in the above equation.

$$\begin{aligned} P &= V \left( C \frac{dV}{dt} \right) \\ \Rightarrow P &= CV \frac{dV}{dt} \end{aligned}$$

By integrating the above equation, we will get the **energy** stored in the capacitor as

$$W = \frac{1}{2} CV^2$$

So, the capacitor stores the energy in the form of electric field.

## 5. Network Theory – Kirchhoff's Laws

Network elements can be either of **active** or **passive** type. Any electrical circuit or network contains one of these two types of network elements or a combination of both.

Now, let us discuss about the following two laws, which are popularly known as **Kirchhoff's laws**.

- Kirchhoff's Current Law
- Kirchhoff's Voltage Law

### Kirchhoff's Current Law

---

Kirchhoff's Current Law (KCL) states that the algebraic sum of currents leaving (or entering) a node is equal to zero.

A **Node** is a point where two or more circuit elements are connected to it. If only two circuit elements are connected to a node, then it is said to be simple node. If three or more circuit elements are connected to a node, then it is said to be **Principal Node**.

**Mathematically**, KCL can be represented as

$$\sum_{m=1}^M I_m = 0$$

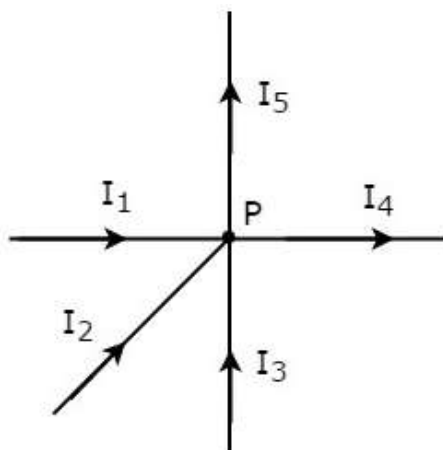
Where,

- $I_m$  is the  $m^{\text{th}}$  branch current leaving the node.
- $M$  is the number of branches that are connected to a node.

The above statement of **KCL** can also be expressed as "the algebraic sum of currents entering a node is equal to the algebraic sum of currents leaving a node". Let us verify this statement through the following example.

### Example

Write **KCL equation** at node **P** of the following figure.



- In the above figure, the branch currents  $I_1$ ,  $I_2$  and  $I_3$  are **entering** at node P. So, consider negative signs for these three currents.
- In the above figure, the branch currents  $I_4$  and  $I_5$  are **leaving** from node P. So, consider positive signs for these two currents.

The **KCL equation** at node P will be

$$\begin{aligned} -I_1 - I_2 - I_3 + I_4 + I_5 &= 0 \\ \Rightarrow I_1 + I_2 + I_3 &= I_4 + I_5 \end{aligned}$$

In the above equation, the left-hand side represents the sum of entering currents, whereas the right-hand side represents the sum of leaving currents.

In this tutorial, we will consider positive sign when the current leaves a node and negative sign when it enters a node. Similarly, you can consider negative sign when the current leaves a node and positive sign when it enters a node. In both cases, the **result will be same**.

**Note:** KCL is independent of the nature of network elements that are connected to a node.

## Kirchhoff's Voltage Law

Kirchhoff's Voltage Law (KVL) states that the algebraic sum of voltages around a loop or mesh is equal to zero.

A **Loop** is a path that terminates at the same node where it started from. In contrast, a **Mesh** is a loop that doesn't contain any other loops inside it.

Mathematically, KVL can be represented as

$$\sum_{n=1}^N V_n = 0$$

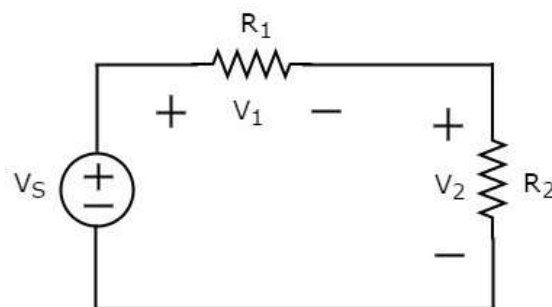
Where,

- $V_n$  is the  $n^{\text{th}}$  element's voltage in a loop (mesh).
- $N$  is the number of network elements in the loop (mesh).

The above statement of **KVL** can also be expressed as "the algebraic sum of voltage sources is equal to the algebraic sum of voltage drops that are present in a loop." Let us verify this statement with the help of the following example.

### Example

Write **KVL equation** around the loop of the following circuit.



The above circuit diagram consists of a voltage source,  $V_S$  in series with two resistors  $R_1$  and  $R_2$ . The voltage drops across the resistors  $R_1$  and  $R_2$  are  $V_1$  and  $V_2$  respectively.

Apply **KVL** around the loop.

$$V_S - V_1 - V_2 = 0$$

$$\Rightarrow V_S = V_1 + V_2$$

In the above equation, the left-hand side term represents single voltage source  $V_S$ . Whereas, the right-hand side represents the **sum of voltage drops**. In this example, we considered only one voltage source. That's why the left-hand side contains only one term. If we consider multiple voltage sources, then the left side contains sum of voltage sources.

In this tutorial, we consider the sign of each element's voltage as the polarity of the second terminal that is present while travelling around the loop. Similarly, you can consider the sign of each voltage as the polarity of the first terminal that is present while travelling around the loop. In both cases, the **result will be same**.

**Note:** KVL is independent of the nature of network elements that are present in a loop.

## 6. Network Theory – Electrical Quantity Division Principles

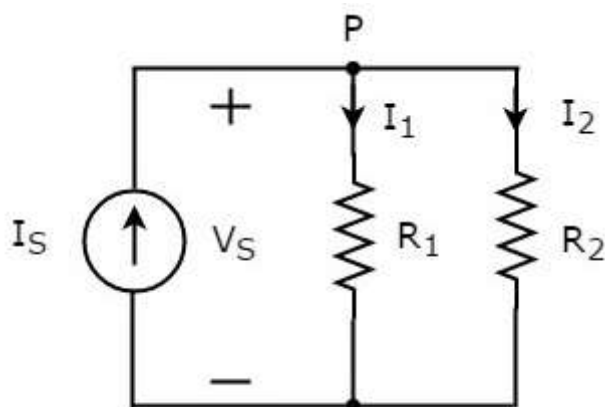
In this chapter, let us discuss about the following two division principles of electrical quantities.

- Current Division Principle
- Voltage Division Principle

### Current Division Principle

When two or more passive elements are connected in parallel, the amount of current that flows through each element gets **divided** (shared) among themselves from the current that is entering the node.

Consider the following **circuit diagram**.



The above circuit diagram consists of an input current source  $I_S$  in parallel with two resistors  $R_1$  and  $R_2$ . The voltage across each element is  $V_S$ . The currents flowing through the resistors  $R_1$  and  $R_2$  are  $I_1$  and  $I_2$  respectively.

The **KCL equation** at node **P** will be

$$I_S = I_1 + I_2$$

- Substitute  $I_1 = \frac{V_S}{R_1}$  and  $I_2 = \frac{V_S}{R_2}$  in the above equation.

$$I_S = \frac{V_S}{R_1} + \frac{V_S}{R_2} = V_S \left( \frac{R_2 + R_1}{R_1 R_2} \right)$$

$$\Rightarrow V_S = I_S \left( \frac{R_1 R_2}{R_1 + R_2} \right)$$

- Substitute the value of  $V_S$  in  $I_1 = \frac{V_S}{R_1}$ .

$$I_1 = \frac{I_S}{R_1} \left( \frac{R_1 R_2}{R_1 + R_2} \right)$$

$$\Rightarrow I_1 = I_S \left( \frac{R_2}{R_1 + R_2} \right)$$

- Substitute the value of  $V_S$  in  $I_2 = \frac{V_S}{R_2}$ .

$$I_2 = \frac{I_S}{R_2} \left( \frac{R_1 R_2}{R_1 + R_2} \right)$$

$$\Rightarrow I_2 = I_S \left( \frac{R_1}{R_1 + R_2} \right)$$

From equations of  $I_1$  and  $I_2$ , we can generalize that the current flowing through any passive element can be found by using the following formula.

$$I_N = I_S \left( \frac{Z_1 \parallel Z_2 \parallel \dots \parallel Z_{N-1}}{Z_1 + Z_2 + \dots + Z_N} \right)$$

This is known as **current division principle** and it is applicable, when two or more passive elements are connected in parallel and only one current enters the node.

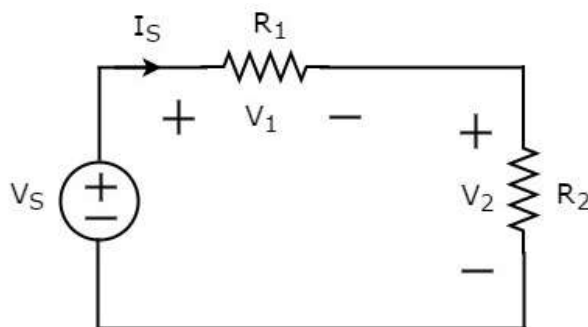
Where,

- $I_N$  is the current flowing through the passive element of  $N^{\text{th}}$  branch.
- $I_S$  is the input current, which enters the node.
- $Z_1, Z_2, \dots, Z_N$  are the impedances of 1<sup>st</sup> branch, 2<sup>nd</sup> branch, ...,  $N^{\text{th}}$  branch respectively.

## Voltage Division Principle

When two or more passive elements are connected in series, the amount of voltage present across each element gets **divided** (shared) among themselves from the voltage that is available across that entire combination.

Consider the following **circuit diagram**.



The above circuit diagram consists of a voltage source,  $V_S$  in series with two resistors  $R_1$  and  $R_2$ . The current flowing through these elements is  $I_S$ . The voltage drops across the resistors  $R_1$  and  $R_2$  are  $V_1$  and  $V_2$  respectively.

The **KVL equation** around the loop will be

$$V_S = V_1 + V_2$$

- Substitute  $V_1 = I_S R_1$  and  $V_2 = I_S R_2$  in the above equation.

$$V_S = I_S R_1 + I_S R_2 = I_S (R_1 + R_2)$$

$$\Rightarrow I_S = \frac{V_S}{R_1 + R_2}$$



- Substitute the value of  $I_S$  in  $V_1 = I_S R_1$ .

$$V_1 = \left( \frac{V_S}{R_1 + R_2} \right) R_1$$

$$\Rightarrow V_1 = V_S \left( \frac{R_1}{R_1 + R_2} \right)$$

- Substitute the value of  $I_S$  in  $V_2 = I_S R_2$ .

$$V_2 = \left( \frac{V_S}{R_1 + R_2} \right) R_2$$

$$\Rightarrow V_2 = V_S \left( \frac{R_2}{R_1 + R_2} \right)$$

From equations of  $V_1$  and  $V_2$ , we can generalize that the voltage across any passive element can be found by using the following formula.

$$V_N = V_S \left( \frac{Z_N}{Z_1 + Z_2 + \dots + Z_N} \right)$$

This is known as **voltage division principle** and it is applicable, when two or more passive elements are connected in series and only one voltage available across the entire combination.

Where,

- $V_N$  is the voltage across  $N^{\text{th}}$  passive element.
- $V_S$  is the input voltage, which is present across the entire combination of series passive elements.
- $Z_1, Z_2, \dots, Z_N$  are the impedances of 1<sup>st</sup> passive element, 2<sup>nd</sup> passive element, ...,  $N^{\text{th}}$  passive element respectively.

# 7. Network Theory – Nodal Analysis

There are two basic methods that are used for solving any electrical network: **Nodal analysis** and **Mesh analysis**. In this chapter, let us discuss about the **Nodal analysis** method.

In Nodal analysis, we will consider the node voltages with respect to Ground. Hence, Nodal analysis is also called as **Node-voltage method**.

## Procedure of Nodal Analysis

---

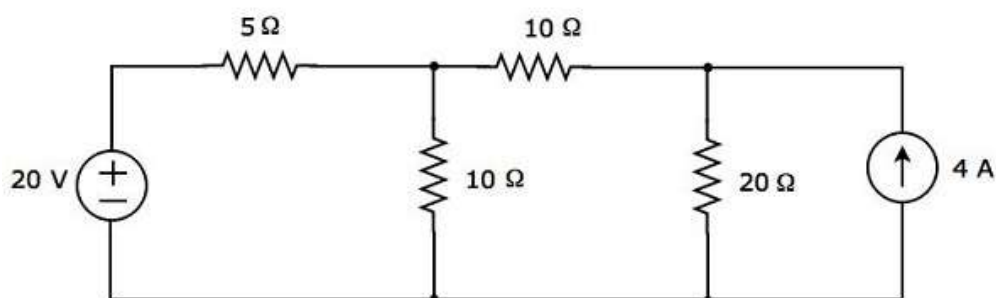
Follow these steps while solving any electrical network or circuit using Nodal analysis.

- **Step 1:** Identify the **principal nodes** and choose one of them as **reference node**. We will treat that reference node as the Ground.
- **Step 2:** Label the **node voltages** with respect to Ground from all the principal nodes except the reference node.
- **Step 3:** Write **nodal equations** at all the principal nodes except the reference node. Nodal equation is obtained by applying KCL first and then Ohm's law.
- **Step 4:** Solve the nodal equations obtained in Step 3 in order to get the node voltages.

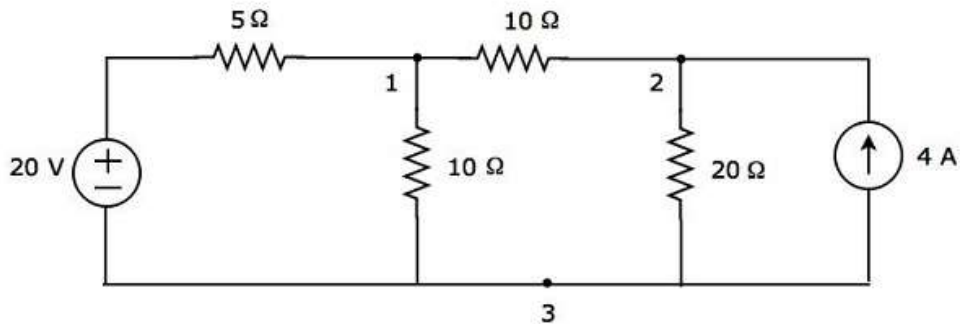
Now, we can find the current flowing through any element and the voltage across any element that is present in the given network by using node voltages.

### Example

Find the current flowing through  $20\ \Omega$  resistor of the following circuit using **Nodal analysis**.

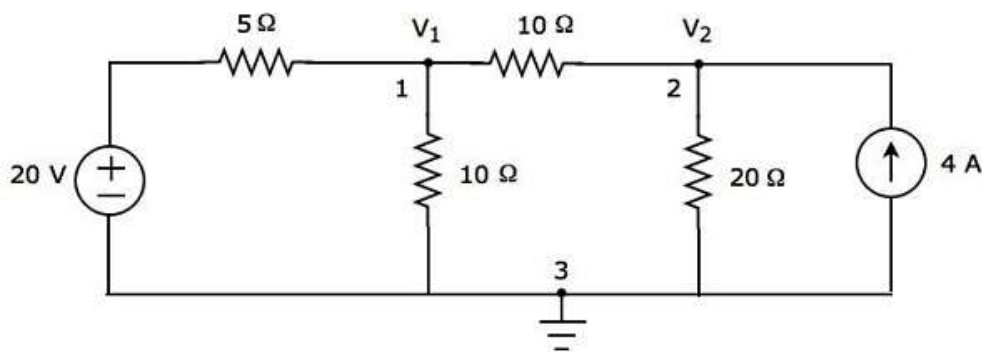


**Step 1:** There are **three principal nodes** in the above circuit. Those are labelled as 1, 2, and 3 in the following figure.



In the above figure, consider **node 3** as reference node (Ground).

**Step 2:** The node voltages,  $V_1$  and  $V_2$ , are labelled in the following figure.



In the above figure,  $V_1$  is the voltage from node 1 with respect to ground and  $V_2$  is the voltage from node 2 with respect to ground.

**Step 3:** In this case, we will get **two nodal equations**, since there are two principal nodes, 1 and 2, other than Ground. When we write the nodal equations at a node, assume all the currents are leaving from the node for which the direction of current is not mentioned and that node's voltage as greater than other node voltages in the circuit.

The **nodal equation** at node 1 is

$$\begin{aligned} \frac{V_1 - 20}{5} + \frac{V_1}{10} + \frac{V_1 - V_2}{10} &= 0 \\ \Rightarrow \frac{2V_1 - 40 + V_1 + V_1 - V_2}{10} &= 0 \\ \Rightarrow 4V_1 - 40 - V_2 &= 0 \\ \Rightarrow V_2 &= 4V_1 - 40 \end{aligned}$$

**Equation 1**

The **nodal equation** at node 2 is

$$\begin{aligned}
 -4 + \frac{V_2}{20} + \frac{V_2 - V_1}{10} &= 0 \\
 \Rightarrow \frac{-80 + V_2 + 2V_2 - 2V_1}{20} &= 0 \\
 \Rightarrow 3V_2 - 2V_1 &= 80
 \end{aligned}$$

**Equation 2**

**Step 4:** Finding node voltages,  $V_1$  and  $V_2$  by solving Equation 1 and Equation 2.

Substitute Equation 1 in Equation 2.

$$\begin{aligned}
 3(4V_1 - 40) - 2V_1 &= 80 \\
 \Rightarrow 12V_1 - 120 - 2V_1 &= 80 \\
 \Rightarrow 10V_1 &= 200 \\
 \Rightarrow V_1 &= 20 \text{ V}
 \end{aligned}$$

Substitute  $V_1 = 20 \text{ V}$  in Equation 1.

$$\begin{aligned}
 V_2 &= 4(20) - 40 \\
 \Rightarrow V_2 &= 40 \text{ V}
 \end{aligned}$$

So, we got the node voltages  $V_1$  and  $V_2$  as **20 V and 40 V** respectively.

**Step 5:** The voltage across  $20 \Omega$  resistor is nothing but the node voltage  $V_2$  and it is equal to  $40 \text{ V}$ . Now, we can find the current flowing through  $20 \Omega$  resistor by using Ohm's law.

$$I_{20 \Omega} = \frac{V_2}{R}$$

Substitute the values of  $V_2$  and  $R$  in the above equation.

$$\begin{aligned}
 I_{20 \Omega} &= \frac{40}{20} \\
 \Rightarrow I_{20 \Omega} &= 2 \text{ A}
 \end{aligned}$$

Therefore, the current flowing through  $20 \Omega$  resistor of given circuit is **2 A**.

**Note:** From the above example, we can conclude that we have to solve 'n' nodal equations, if the electric circuit has 'n' principal nodes (except the reference node). Therefore, we can choose Nodal analysis when the **number of principal nodes** (except reference node) is less than the number of meshes of any electrical circuit.

# 8. Network Theory – Mesh Analysis

In Mesh analysis, we will consider the currents flowing through each mesh. Hence, Mesh analysis is also called as **Mesh-current method**.

A **branch** is a path that joins two nodes and it contains a circuit element. If a branch belongs to only one mesh, then the branch current will be equal to mesh current.

If a branch is common to two meshes, then the branch current will be equal to the sum (or difference) of two mesh currents, when they are in same (or opposite) direction.

## Procedure of Mesh Analysis

---

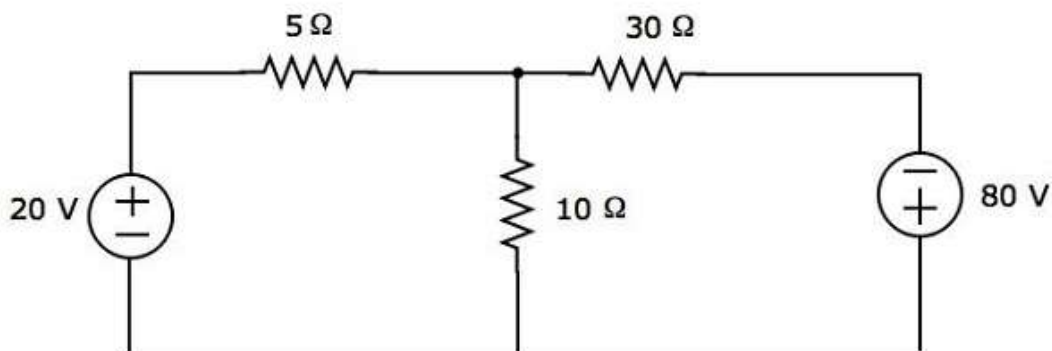
Follow these steps while solving any electrical network or circuit using Mesh analysis.

- **Step 1:** Identify the **meshes** and label the mesh currents in either clockwise or anti-clockwise direction.
- **Step 2:** Observe the amount of current that flows through each element in terms of mesh currents.
- **Step 3:** Write **mesh equations** to all meshes. Mesh equation is obtained by applying KVL first and then Ohm's law.
- **Step 4:** Solve the mesh equations obtained in Step 3 in order to get the **mesh currents**.

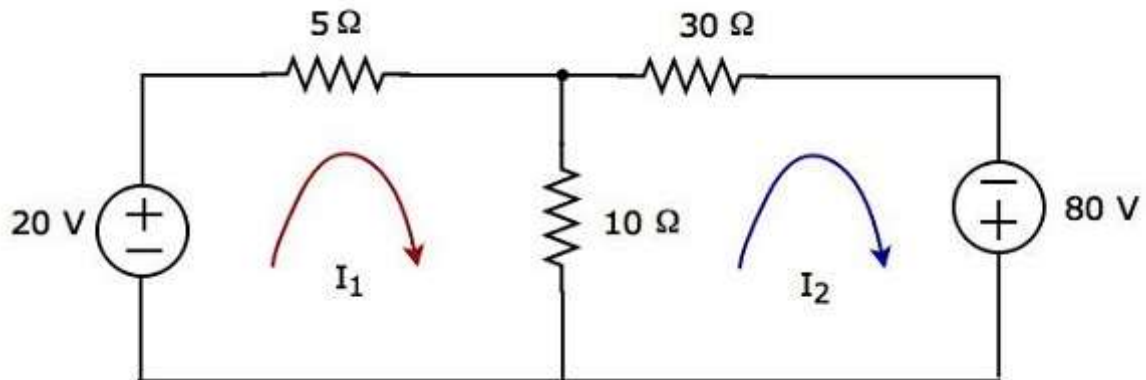
Now, we can find the current flowing through any element and the voltage across any element that is present in the given network by using mesh currents.

### Example

Find the voltage across  $30\ \Omega$  resistor using **Mesh analysis**.



**Step 1:** There are two meshes in the above circuit. The **mesh currents**  $I_1$  and  $I_2$  are considered in clockwise direction. These mesh currents are shown in the following figure.



**Step 2:** The mesh current  $I_1$  flows through 20 V voltage source and 5 Ω resistor. Similarly, the mesh current  $I_2$  flows through 30 Ω resistor and -80 V voltage source. But, the difference of two mesh currents,  $I_1$  and  $I_2$ , flows through 10 Ω resistor, since it is the common branch of two meshes.

**Step 3:** In this case, we will get **two mesh equations** since there are two meshes in the given circuit. When we write the mesh equations, assume the mesh current of that particular mesh as greater than all other mesh currents of the circuit.

The **mesh equation** of first mesh is

$$\begin{aligned} 20 - 5I_1 - 10(I_1 - I_2) &= 0 \\ \Rightarrow 20 - 15I_1 + 10I_2 &= 0 \\ \Rightarrow 10I_2 &= 15I_1 - 20 \end{aligned}$$

Divide the above equation with 5.

$$2I_2 = 3I_1 - 4$$

Multiply the above equation with 2.

$$4I_2 = 6I_1 - 8 \quad \text{Equation 1}$$

The **mesh equation** of second mesh is

$$-10(I_2 - I_1) - 30I_2 + 80 = 0$$

Divide the above equation with 10.

$$\begin{aligned} -(I_2 - I_1) - 3I_2 + 8 &= 0 \\ \Rightarrow -4I_2 + I_1 + 8 &= 0 \\ 4I_2 &= I_1 + 8 \end{aligned}$$

$$\text{Equation 2}$$

**Step 4:** Finding mesh currents  $I_1$  and  $I_2$  by solving Equation 1 and Equation 2.

The left-hand side terms of Equation 1 and Equation 2 are the same. Hence, equate the right-hand side terms of Equation 1 and Equation 2 in order to find the value of  $I_1$ .

$$\begin{aligned} 6I_1 - 8 &= I_1 + 8 \\ \Rightarrow 5I_1 &= 16 \\ \Rightarrow I_1 &= \frac{16}{5} \text{ A} \end{aligned}$$

Substitute  $I_1$  value in Equation 2.

$$\begin{aligned} 4I_2 &= \frac{16}{5} + 8 \\ \Rightarrow 4I_2 &= \frac{56}{5} \\ \Rightarrow I_2 &= \frac{14}{5} \text{ A} \end{aligned}$$

So, we got the mesh currents  $I_1$  and  $I_2$  as  $\frac{16}{5} \text{ A}$  and  $\frac{14}{5} \text{ A}$  respectively.

**Step 5:** The current flowing through  $30 \Omega$  resistor is nothing but the mesh current  $I_2$  and it is equal to  $\frac{14}{5} \text{ A}$ . Now, we can find the voltage across  $30 \Omega$  resistor by using Ohm's law.

$$V_{30 \Omega} = I_2 R$$

Substitute the values of  $I_2$  and  $R$  in the above equation.

$$\begin{aligned} V_{30 \Omega} &= \left(\frac{14}{5}\right) 30 \\ \Rightarrow V_{30 \Omega} &= 84 \text{ V} \end{aligned}$$

Therefore, the voltage across  $30 \Omega$  resistor of the given circuit is **84 V**.

**Note 1:** From the above example, we can conclude that we have to solve 'm' mesh equations, if the electric circuit is having 'm' meshes. That's why we can choose Mesh analysis when the number of meshes is less than the number of principal nodes (except the reference node) of any electrical circuit.

**Note 2:** We can choose either Nodal analysis or Mesh analysis, when the number of meshes is equal to the number of principal nodes (except the reference node) in any electric circuit.

## 9. Network Theory – Equivalent Circuits

If a circuit consists of two or more similar passive elements and are connected in exclusively of series type or parallel type, then we can replace them with a single equivalent passive element. Hence, this circuit is called as an **equivalent circuit**.

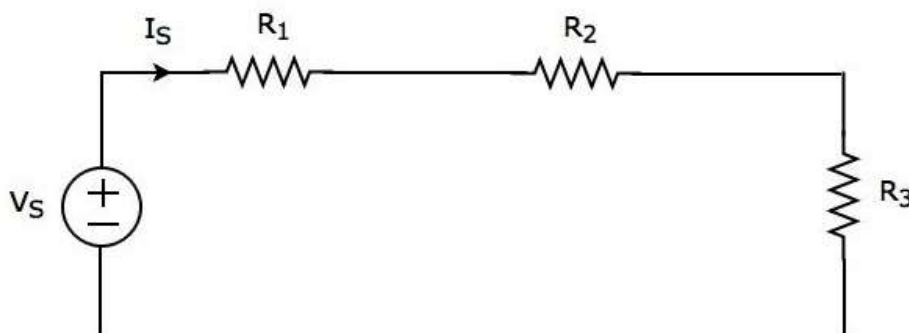
In this chapter, let us discuss about the following two equivalent circuits.

- Series Equivalent Circuit
- Parallel Equivalent Circuit

### Series Equivalent Circuit

If similar passive elements are connected in **series**, then the same current will flow through all these elements. But, the voltage gets divided across each element.

Consider the following **circuit diagram**.



It has a single voltage source ( $V_S$ ) and three resistors having resistances of  $R_1$ ,  $R_2$  and  $R_3$ . All these elements are connected in series. The current  $I_S$  flows through all these elements.

The above circuit has only one mesh. The **KVL equation** around this mesh is

$$V_S = V_1 + V_2 + V_3$$

Substitute  $V_1 = I_S R_1$ ,  $V_2 = I_S R_2$  and  $V_3 = I_S R_3$  in the above equation.

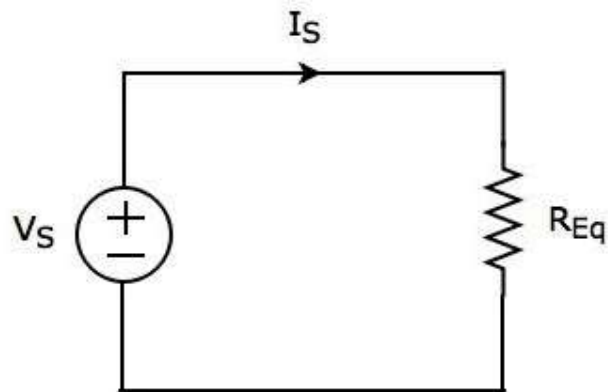
$$\begin{aligned} V_S &= I_S R_1 + I_S R_2 + I_S R_3 \\ \Rightarrow V_S &= I_S (R_1 + R_2 + R_3) \end{aligned}$$

The above equation is in the form of  $V_S = I_S R_{Eq}$  where,

$$R_{Eq} = R_1 + R_2 + R_3$$



The **equivalent circuit diagram** of the given circuit is shown in the following figure.



That means, if multiple resistors are connected in series, then we can replace them with an **equivalent resistor**. The resistance of this equivalent resistor is equal to sum of the resistances of all those multiple resistors.

**Note 1:** If 'N' inductors having inductances of  $L_1, L_2, \dots, L_N$  are connected in series, then the **equivalent inductance** will be

$$L_{Eq} = L_1 + L_2 + \dots + L_N$$

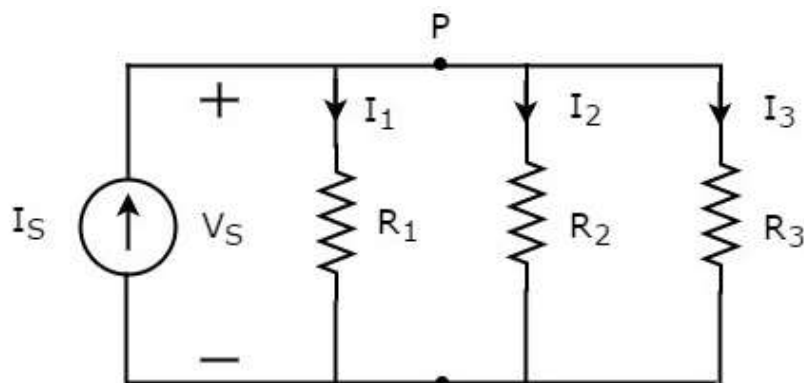
**Note 2:** If 'N' capacitors having capacitances of  $C_1, C_2, \dots, C_N$  are connected in series, then the **equivalent capacitance** will be

$$\frac{1}{C_{Eq}} = \frac{1}{C_1} + \frac{1}{C_2} + \dots + \frac{1}{C_N}$$

## Parallel Equivalent Circuit

If similar passive elements are connected in **parallel**, then the same voltage will be maintained across each element. But, the current flowing through each element gets divided.

Consider the following **circuit diagram**.



It has a single current source ( $I_S$ ) and three resistors having resistances of  $R_1, R_2$ , and  $R_3$ . All these elements are connected in parallel. The voltage ( $V_S$ ) is available across all these elements.

The above circuit has only one principal node (P) except the Ground node. The **KCL equation** at this principal node (P) is

$$I_S = I_1 + I_2 + I_3$$

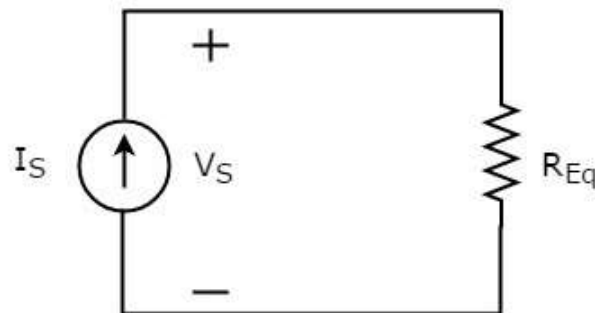
Substitute  $I_1 = \frac{V_S}{R_1}$ ,  $I_2 = \frac{V_S}{R_2}$  and  $I_3 = \frac{V_S}{R_3}$  in the above equation.

$$\begin{aligned} I_S &= \frac{V_S}{R_1} + \frac{V_S}{R_2} + \frac{V_S}{R_3} \\ \Rightarrow I_S &= V_S \left( \frac{1}{R_1} + \frac{1}{R_2} + \frac{1}{R_3} \right) \\ \Rightarrow V_S &= I_S \left[ \frac{1}{\left( \frac{1}{R_1} + \frac{1}{R_2} + \frac{1}{R_3} \right)} \right] \end{aligned}$$

The above equation is in the form of  $V_S = I_S R_{Eq}$  where,

$$\begin{aligned} R_{Eq} &= \frac{1}{\left( \frac{1}{R_1} + \frac{1}{R_2} + \frac{1}{R_3} \right)} \\ \Rightarrow \frac{1}{R_{Eq}} &= \frac{1}{R_1} + \frac{1}{R_2} + \frac{1}{R_3} \end{aligned}$$

The **equivalent circuit diagram** of the given circuit is shown in the following figure.



That means, if multiple resistors are connected in parallel, then we can replace them with an **equivalent resistor**. The resistance of this equivalent resistor is equal to the reciprocal of sum of reciprocal of each resistance of all those multiple resistors.

**Note 1:** If 'N' inductors having inductances of  $L_1, L_2, \dots, L_N$  are connected in parallel, then the **equivalent inductance** will be

$$\frac{1}{L_{Eq}} = \frac{1}{L_1} + \frac{1}{L_2} + \dots + \frac{1}{L_N}$$

**Note 2:** If 'N' capacitors having capacitances of  $C_1, C_2, \dots, C_N$  are connected in parallel, then the **equivalent capacitance** will be

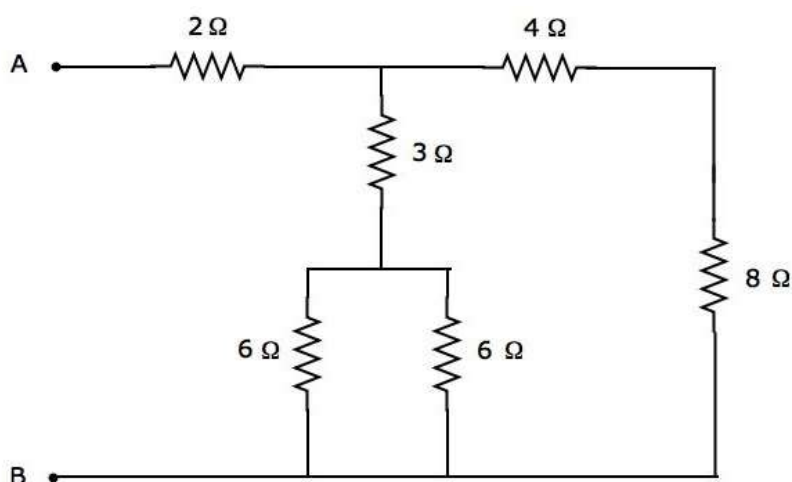
$$C_{Eq} = C_1 + C_2 + \dots + C_N$$

## 10. Equivalent Circuits – Example Problem

In the previous chapter, we discussed about the equivalent circuits of series combination and parallel combination individually. In this chapter, let us solve an example problem by considering both series and parallel combinations of similar passive elements.

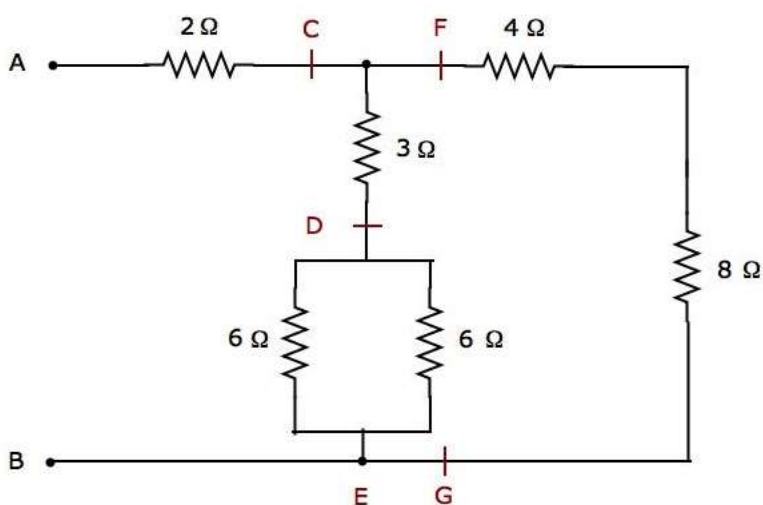
### Example

Let us find the **equivalent resistance** across the terminals A & B of the following electrical network.



We will get the equivalent resistance across terminals A & B by minimizing the above network into a single resistor between those two terminals. For this, we have to **identify the combination of resistors** that are connected in series form and parallel form and then find the equivalent resistance of the respective form in every step.

The given electrical network is **modified** into the following form as shown in the following figure.



In the above figure, the letters, C to G, are used for labelling various terminals.

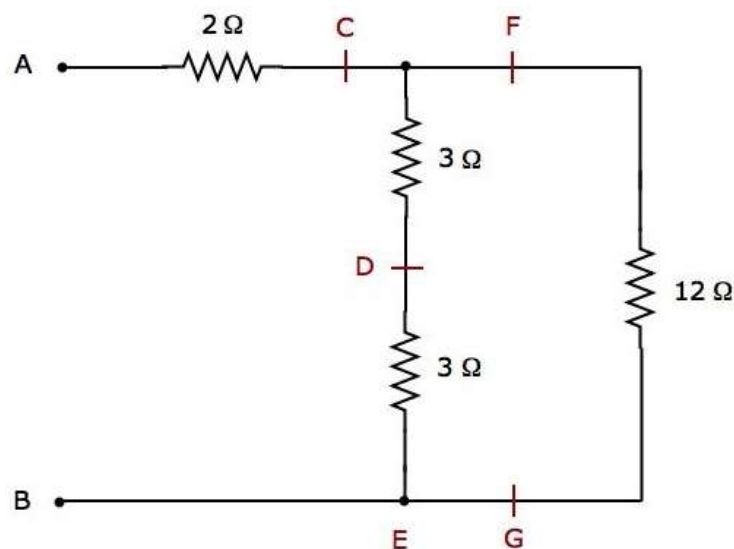
**Step 1:** In the above network, two **6 Ω resistors** are connected in **parallel**. So, the equivalent resistance between D & E will be 3 Ω. This can be obtained by doing the following simplification.

$$R_{DE} = \frac{6 \times 6}{6 + 6} = \frac{36}{12} = 3 \Omega$$

In the above network, the resistors **4 Ω** and **8 Ω** are connected in **series**. So, the equivalent resistance between F & G will be 12 Ω. This can be obtained by doing the following simplification.

$$R_{FG} = 4 + 8 = 12 \Omega$$

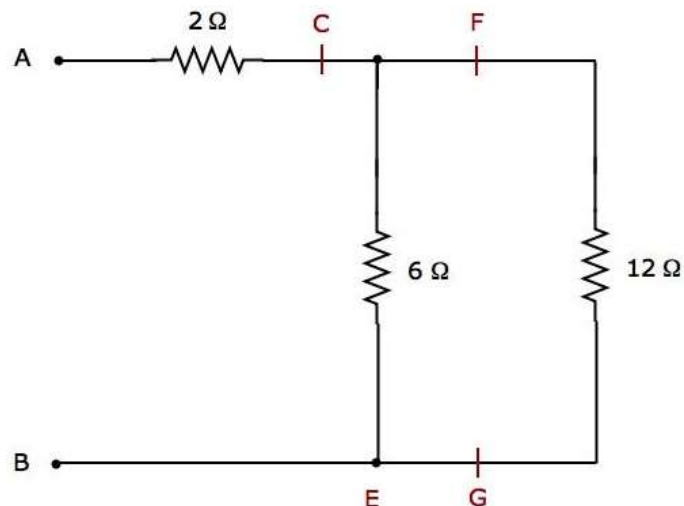
**Step 2:** The simplified electrical **network after Step 1** is shown in the following figure.



In the above network, two **3 Ω resistors** are connected in **series**. So, the equivalent resistance between C & E will be 6 Ω. This can be obtained by doing the following simplification.

$$R_{CE} = 3 + 3 = 6 \Omega$$

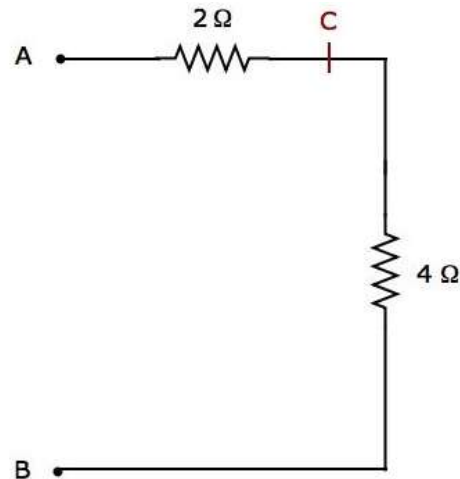
**Step 3:** The simplified electrical **network after Step 2** is shown in the following figure.



In the above network, the resistors **6 Ω** and **12 Ω** are connected in **parallel**. So, the equivalent resistance between C & B will be 4 Ω. This can be obtained by doing the following simplification.

$$R_{CB} = \frac{6 \times 12}{6 + 12} = \frac{72}{18} = 4 \Omega$$

**Step 4:** The simplified electrical **network after Step 3** is shown in the following figure.



In the above network, the resistors **2 Ω** and **4 Ω** are connected in **series** between the terminals A & B. So, the equivalent resistance between A & B will be 6 Ω. This can be obtained by doing the following simplification.

$$R_{AB} = 2 + 4 = 6 \Omega$$

Therefore, the equivalent resistance between terminals A & B of the given electrical network is **6 Ω**.

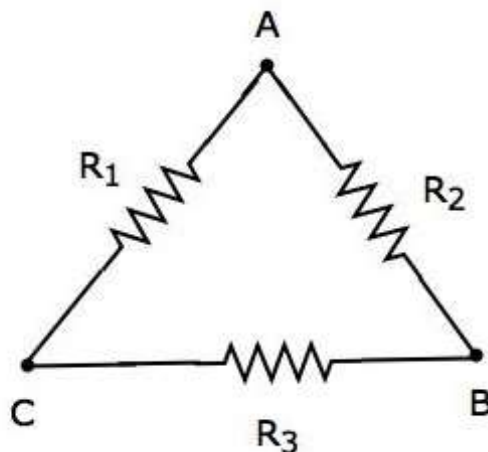
# 11. Network Theory – Delta to Star Conversion

In the previous chapter, we discussed an example problem related equivalent resistance. There, we calculated the **equivalent resistance** between the terminals A & B of the given electrical network easily. Because, in every step, we got the combination of resistors that are connected in either series form or parallel form.

However, in some situations, it is difficult to simplify the network by following the previous approach. For example, the resistors connected in either delta ( $\Delta$ ) form or star form. In such situations, we have to **convert** the network of one form to the other in order to simplify it further by using series combination or parallel combination. In this chapter, let us discuss about the **Delta to Star Conversion**.

## Delta Network

Consider the following **delta network** as shown in the following figure.



The following equations represent the **equivalent resistance** between two terminals of delta network, when the third terminal is kept open.

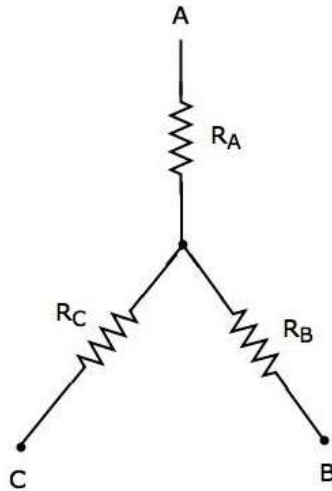
$$R_{AB} = \frac{(R_1 + R_3) R_2}{R_1 + R_2 + R_3}$$

$$R_{BC} = \frac{(R_1 + R_2) R_3}{R_1 + R_2 + R_3}$$

$$R_{CA} = \frac{(R_2 + R_3) R_1}{R_1 + R_2 + R_3}$$

## Star Network

The following figure shows the **equivalent star network** corresponding to the above delta network.



The following equations represent the **equivalent resistance** between two terminals of star network, when the third terminal is kept open.

$$R_{AB} = R_A + R_B$$

$$R_{BC} = R_B + R_C$$

$$R_{CA} = R_C + R_A$$

## Star Network Resistances in terms of Delta Network Resistances

We will get the following equations by equating the right-hand side terms of the above equations for which the left-hand side terms are same.

$$R_A + R_B = \frac{(R_1 + R_3) R_2}{R_1 + R_2 + R_3} \quad \text{Equation 1}$$

$$R_B + R_C = \frac{(R_1 + R_2) R_3}{R_1 + R_2 + R_3} \quad \text{Equation 2}$$

$$R_C + R_A = \frac{(R_2 + R_3) R_1}{R_1 + R_2 + R_3} \quad \text{Equation 3}$$

By adding the above three equations, we will get

$$2(R_A + R_B + R_C) = \frac{2(R_1 R_2 + R_2 R_3 + R_3 R_1)}{R_1 + R_2 + R_3}$$

$$\Rightarrow R_A + R_B + R_C = \frac{R_1 R_2 + R_2 R_3 + R_3 R_1}{R_1 + R_2 + R_3} \quad \text{Equation 4}$$

Subtract Equation 2 from Equation 4.

$$R_A + R_B + R_C - (R_B + R_C) = \frac{R_1 R_2 + R_2 R_3 + R_3 R_1}{R_1 + R_2 + R_3} - \frac{(R_1 + R_2) R_3}{R_1 + R_2 + R_3}$$

$$R_A = \frac{R_1 R_2}{R_1 + R_2 + R_3}$$

By subtracting Equation 3 from Equation 4, we will get

$$R_B = \frac{R_2 R_3}{R_1 + R_2 + R_3}$$

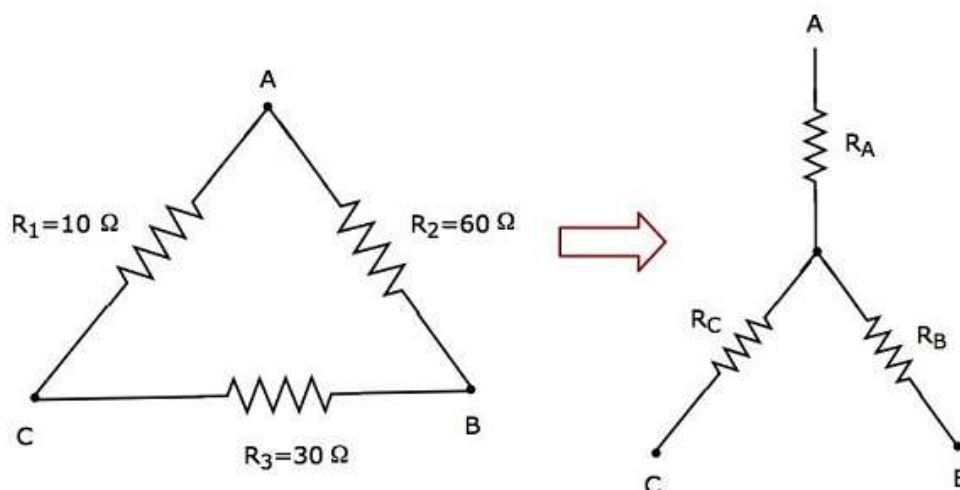
By subtracting Equation 1 from Equation 4, we will get

$$R_C = \frac{R_3 R_1}{R_1 + R_2 + R_3}$$

By using the above relations, we can find the resistances of star network from the resistances of delta network. In this way, we can convert a **delta network** into a **star network**.

### Example

Let us calculate the **resistances of star network**, which are equivalent to that of delta network as shown in the following figure.





Given the **resistances of delta network** as  $R_1 = 10 \Omega$ ,  $R_2 = 60 \Omega$  and  $R_3 = 30 \Omega$ .

We know the following relations of the resistances of star network in terms of resistances of delta network.

$$R_A = \frac{R_1 R_2}{R_1 + R_2 + R_3}$$

$$R_B = \frac{R_2 R_3}{R_1 + R_2 + R_3}$$

$$R_C = \frac{R_3 R_1}{R_1 + R_2 + R_3}$$

- Substitute the values of  $R_1$ ,  $R_2$  and  $R_3$  in the above equations.

$$R_A = \frac{10 \times 60}{10 + 60 + 30} = \frac{600}{100} = 6 \Omega$$

$$R_B = \frac{60 \times 30}{10 + 60 + 30} = \frac{1800}{100} = 18 \Omega$$

$$R_C = \frac{30 \times 10}{10 + 60 + 30} = \frac{300}{100} = 3 \Omega$$

So, we got the resistances of star network as  $R_A = 6 \Omega$ ,  $R_B = 18 \Omega$  and  $R_C = 3 \Omega$ , which are equivalent to the resistances of the given delta network.

## 12. Network Theory – Star to Delta Conversion

In the previous chapter, we discussed about the conversion of delta network into an equivalent star network. Now, let us discuss about the conversion of star network into an equivalent delta network. This conversion is called as **Star to Delta Conversion**.

In the previous chapter, we got the **resistances of star network** from delta network as

$$R_A = \frac{R_1 R_2}{R_1 + R_2 + R_3} \quad \text{Equation 1}$$

$$R_B = \frac{R_2 R_3}{R_1 + R_2 + R_3} \quad \text{Equation 2}$$

$$R_C = \frac{R_3 R_1}{R_1 + R_2 + R_3} \quad \text{Equation 3}$$

### Delta Network Resistances in terms of Star Network Resistances

Let us manipulate the above equations in order to get the resistances of delta network in terms of resistances of star network.

- **Multiply** each set of two equations and then **add**.

$$R_A R_B + R_B R_C + R_C R_A = \frac{R_1 R_2^2 R_3 + R_2 R_3^2 R_1 + R_3 R_1^2 R_2}{(R_1 + R_2 + R_3)^2}$$

$$\Rightarrow R_A R_B + R_B R_C + R_C R_A = \frac{R_1 R_2 R_3 (R_1 + R_2 + R_3)}{(R_1 + R_2 + R_3)^2}$$

$$\Rightarrow R_A R_B + R_B R_C + R_C R_A = \frac{R_1 R_2 R_3}{R_1 + R_2 + R_3} \quad \text{Equation 4}$$

- By dividing Equation 4 with Equation 2, we will get

$$\frac{R_A R_B + R_B R_C + R_C R_A}{R_B} = R_1$$

$$\Rightarrow R_1 = R_C + R_A + \frac{R_C R_A}{R_B}$$

- By dividing Equation 4 with Equation 3, we will get

$$R_2 = R_A + R_B + \frac{R_A R_B}{R_C}$$

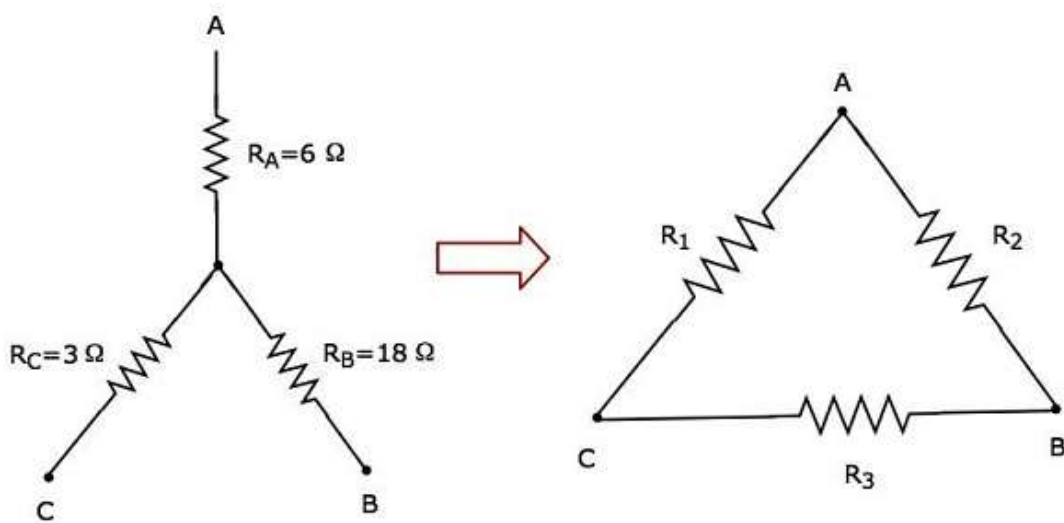
- By dividing Equation 4 with Equation 1, we will get

$$R_3 = R_B + R_C + \frac{R_B R_C}{R_A}$$

By using the above relations, we can find the resistances of delta network from the resistances of star network. In this way, we can convert **star network into delta network**.

### Example

Let us calculate the **resistances of delta network**, which are equivalent to that of star network as shown in the following figure.



Given the **resistances of star network** as  $R_A = 6 \Omega$ ,  $R_B = 18 \Omega$  and  $R_C = 3 \Omega$ .

We know the following relations of the **resistances of delta network** in terms of resistances of star network.

$$R_1 = R_C + R_A + \frac{R_C R_A}{R_B}$$

$$R_2 = R_A + R_B + \frac{R_A R_B}{R_C}$$

$$R_3 = R_B + R_C + \frac{R_B R_C}{R_A}$$

Substitute the values of  $R_A$ ,  $R_B$  and  $R_C$  in the above equations.

$$R_1 = 3 + 6 + \frac{3 \times 6}{18} = 9 + 1 = 10 \Omega$$

$$R_2 = 6 + 18 + \frac{6 \times 18}{3} = 24 + 36 = 60 \Omega$$

$$R_3 = 18 + 3 + \frac{18 \times 3}{6} = 21 + 9 = 30 \Omega$$

So, we got the resistances of delta network as  $R_1 = 10 \Omega$ ,  $R_2 = 60 \Omega$  and  $R_3 = 30 \Omega$ , which are equivalent to the resistances of the given star network.

# 13. Network Theory – Network Topology

Network topology is a graphical representation of electric circuits. It is useful for analyzing complex electric circuits by converting them into network graphs. Network topology is also called as **Graph theory**.

## Basic Terminology of Network Topology

---

Now, let us discuss about the basic terminology involved in this network topology.

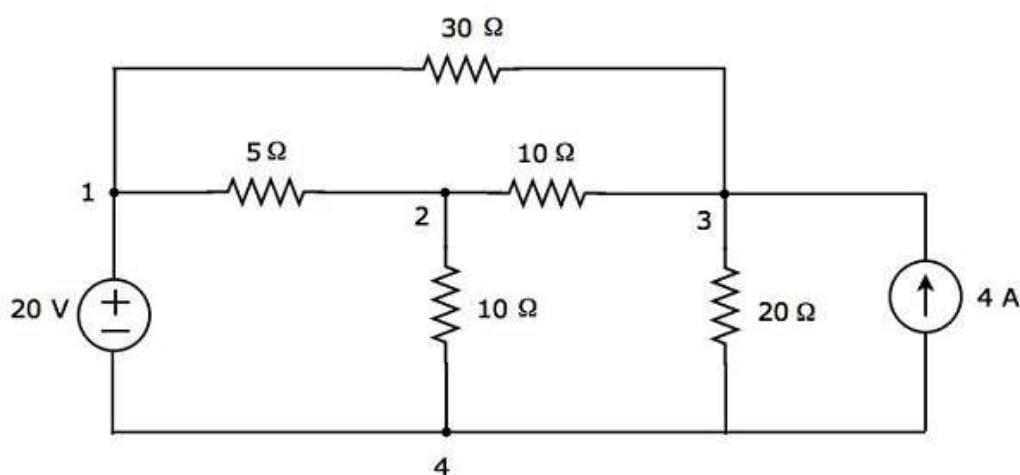
### Graph

Network graph is simply called as **graph**. It consists of a set of nodes connected by branches. In graphs, a node is a common point of two or more branches. Sometimes, only a single branch may connect to the node. A branch is a line segment that connects two nodes.

Any electric circuit or network can be converted into its equivalent **graph** by replacing the passive elements and voltage sources with short circuits and the current sources with open circuits. That means, the line segments in the graph represent the branches corresponding to either passive elements or voltage sources of electric circuit.

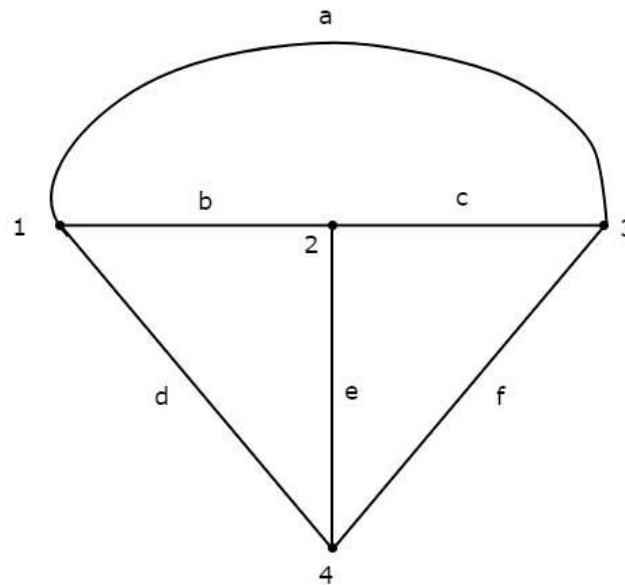
### Example

Let us consider the following **electric circuit**.



In the above circuit, there are **four principal nodes** and those are labelled with 1, 2, 3, and 4. There are **seven branches** in the above circuit, among which one branch contains a 20 V voltage source, another branch contains a 4 A current source and the remaining five branches contain resistors having resistances of 30 Ω, 5 Ω, 10 Ω, 10 Ω and 20 Ω respectively.

An equivalent **graph** corresponding to the above electric circuit is shown in the following figure.



In the above graph, there are **four nodes** and those are labelled with 1, 2, 3 & 4 respectively. These are same as that of principal nodes in the electric circuit. There are **six branches** in the above graph and those are labelled with a, b, c, d, e & f respectively.

In this case, we got **one branch less** in the graph because the 4 A current source is made as open circuit, while converting the electric circuit into its equivalent graph.

From this Example, we can conclude the following points:

- The **number of nodes** present in a graph will be equal to the number of principal nodes present in an electric circuit.
- The **number of branches** present in a graph will be less than or equal to the number of branches present in an electric circuit.

## Types of Graphs

---

Following are the types of graphs:

- Connected Graph
- Unconnected Graph
- Directed Graph
- Undirected Graph

Now, let us discuss these graphs one by one.

### Connected Graph

If there exists at least one branch between any of the two nodes of a graph, then it is called as a **connected graph**. That means, each node in the connected graph will be

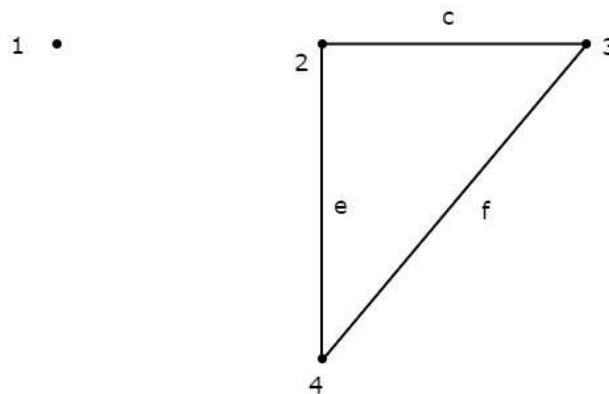
having one or more branches that are connected to it. So, no node will present as isolated or separated.

The graph shown in the previous Example is a **connected graph**. Here, all the nodes are connected by three branches.

### Unconnected Graph

If there exists at least one node in the graph that remains unconnected by even single branch, then it is called as an **unconnected graph**. So, there will be one or more isolated nodes in an unconnected graph.

Consider the graph shown in the following figure.

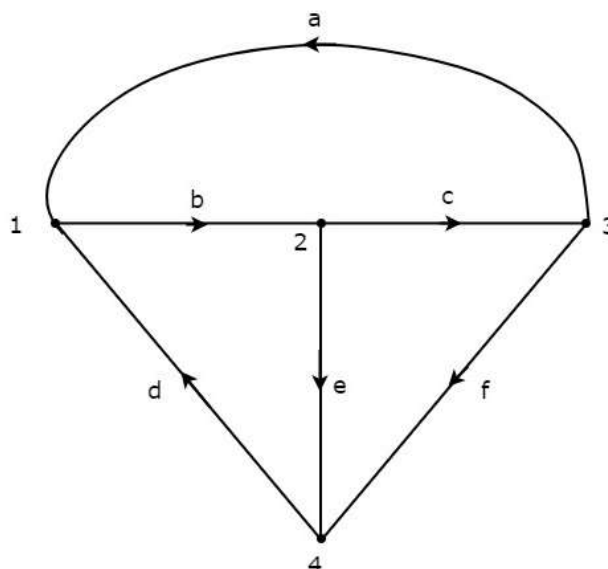


In this graph, the nodes 2, 3, and 4 are connected by two branches each. But, not even a single branch has been connected to the node 1. So, the **node 1** becomes an **isolated node**. Hence, the above graph is an **unconnected graph**.

### Directed Graph

If all the branches of a graph are represented with arrows, then that graph is called as a **directed graph**. These arrows indicate the direction of current flow in each branch. Hence, this graph is also called as **oriented graph**.

Consider the graph shown in the following figure.



In the above graph, the direction of current flow is represented with an arrow in each branch. Hence, it is a **directed graph**.

## Undirected Graph

If the branches of a graph are not represented with arrows, then that graph is called as an **undirected graph**. Since, there are no directions of current flow, this graph is also called as an **unoriented graph**.

The graph that was shown in the first Example of this chapter is an **unoriented graph**, because there are no arrows on the branches of that graph.

## Subgraph and its Types

A part of the graph is called as a **subgraph**. We get subgraphs by removing some nodes and/or branches of a given graph. So, the number of branches and/or nodes of a subgraph will be less than that of the original graph. Hence, we can conclude that a subgraph is a subset of a graph.

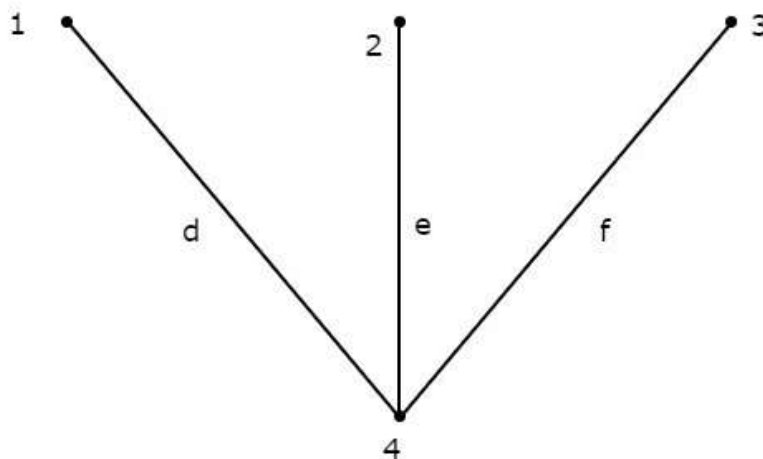
Following are the **two types** of subgraphs.

- Tree
- Co-Tree

## Tree

Tree is a connected subgraph of a given graph, which contains all the nodes of a graph. But, there should not be any loop in that subgraph. The branches of a tree are called as **twigs**.

Consider the following **connected subgraph** of the graph, which is shown in the Example of the beginning of this chapter.



This connected subgraph contains all the four nodes of the given graph and there is no loop. Hence, it is a **Tree**.

This Tree has only three branches out of six branches of given graph. Because, if we consider even single branch of the remaining branches of the graph, then there will be a loop in the above connected subgraph. Then, the resultant connected subgraph will not be a Tree.

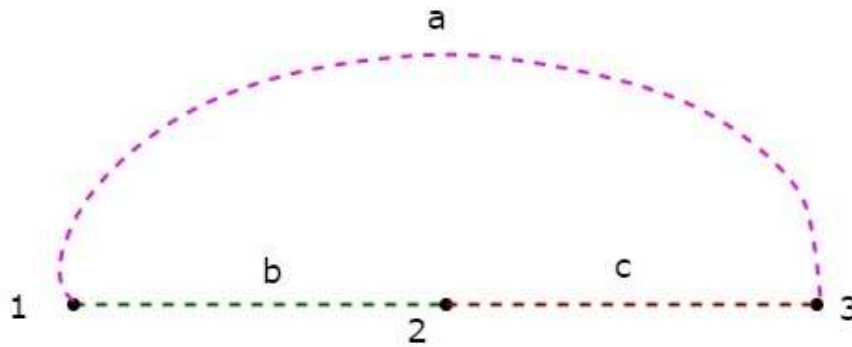
From the above Tree, we can conclude that the **number of branches** that are present in a Tree should be equal to  $n - 1$  where 'n' is the number of nodes of the given graph.



## Co-Tree

Co-Tree is a subgraph, which is formed with the branches that are removed while forming a Tree. Hence, it is called as **Complement** of a Tree. For every Tree, there will be a corresponding Co-Tree and its branches are called as **links** or chords. In general, the links are represented with dotted lines.

The **Co-Tree** corresponding to the above Tree is shown in the following figure.



This Co-Tree has only three nodes instead of four nodes of the given graph, because Node 4 is isolated from the above Co-Tree. Therefore, the Co-Tree need not be a connected subgraph. This Co-Tree has three branches and they form a loop.

The **number of branches** that are present in a co-tree will be equal to the difference between the number of branches of a given graph and the number of twigs. Mathematically, it can be written as

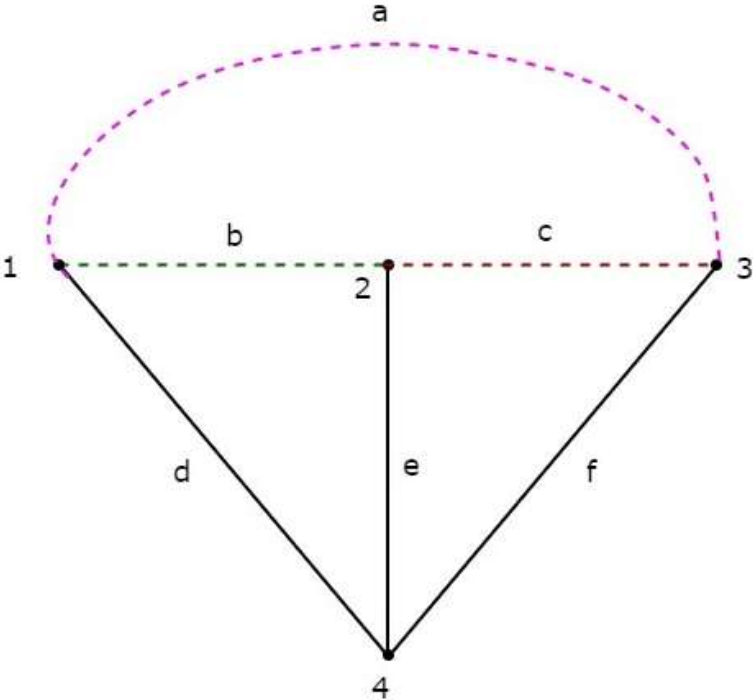
$$l = b - (n - 1)$$

$$l = b - n + 1$$

Where,

- $l$  is the number of links.
- $b$  is the number of branches present in a given graph.
- $n$  is the number of nodes present in a given graph.

If we combine a Tree and its corresponding Co-Tree, then we will get the **original graph** as shown below.



The Tree branches d, e & f are represented with solid lines. The Co-Tree branches a, b & c are represented with dashed lines.

# 14. Network Theory – Network Topology Matrices

In the previous chapter, we discussed how to convert an electric circuit into an equivalent graph. Now, let us discuss the Network Topology Matrices which are useful for solving any electric circuit or network problem by using their equivalent graphs.

## Matrices Associated with Network Graphs

---

Following are the three matrices that are used in Graph theory.

- Incidence Matrix
- Fundamental Loop Matrix
- Fundamental Cut set Matrix

### Incidence Matrix

An Incidence Matrix represents the graph of a given electric circuit or network. Hence, it is possible to draw the graph of that same electric circuit or network from the **incidence matrix**.

We know that graph consists of a set of nodes and those are connected by some branches. So, the connecting of branches to a node is called as incidence. Incidence matrix is represented with the letter A. It is also called as node to branch incidence matrix or **node incidence matrix**.

If there are 'n' nodes and 'b' branches are present in a **directed graph**, then the incidence matrix will have 'n' rows and 'b' columns. Here, rows and columns are corresponding to the nodes and branches of a directed graph. Hence, the **order** of incidence matrix will be **n x b**.

The **elements of incidence matrix** will be having one of these three values, +1, -1 and 0.

- If the branch current is leaving from a selected node, then the value of the element will be +1.
- If the branch current is entering towards a selected node, then the value of the element will be -1.
- If the branch current neither enters at a selected node nor leaves from a selected node, then the value of element will be 0.

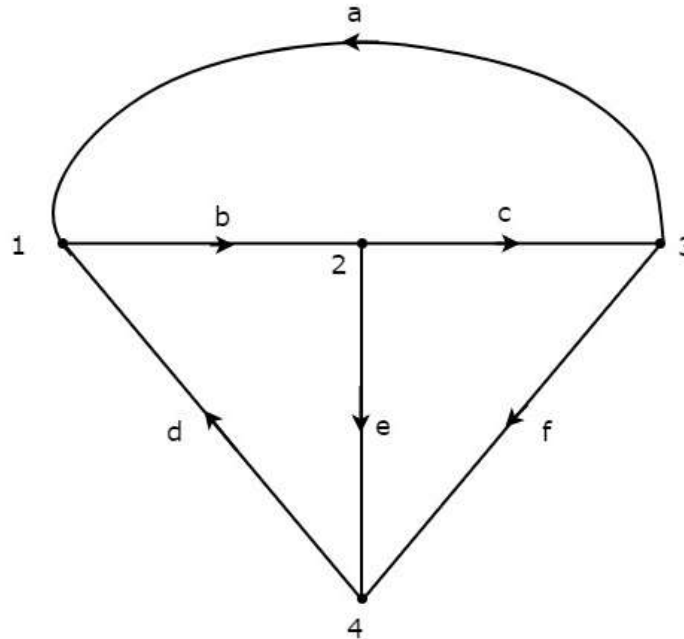
### Procedure to find Incidence Matrix

Follow these steps in order to find the incidence matrix of directed graph.

- Select a node at a time of the given directed graph and fill the values of the elements of incidence matrix corresponding to that node in a row.
- Repeat the above step for all the nodes of the given directed graph.

## Example

Consider the following **directed graph**.



The **incidence matrix** corresponding to the above directed graph will be

$$A = \begin{bmatrix} -1 & 1 & 0 & -1 & 0 & 0 \\ 0 & -1 & 1 & 0 & 1 & 0 \\ 1 & 0 & -1 & 0 & 0 & 1 \\ 0 & 0 & 0 & 1 & -1 & -1 \end{bmatrix}$$

The rows and columns of the above matrix represents the nodes and branches of given directed graph. The order of this incidence matrix is 4x6.

By observing the above incidence matrix, we can conclude that the **summation** of column elements of incidence matrix is equal to zero. That means, a branch current leaves from one node and enters at another single node only.

**Note:** If the given graph is an un-directed type, then convert it into a directed graph by representing the arrows on each branch of it. We can consider the arbitrary direction of current flow in each branch.

## Fundamental Loop Matrix

Fundamental loop or **f-loop** is a loop, which contains only one link and one or more twigs. So, the number of f-loops will be equal to the number of links. Fundamental loop matrix is represented with letter B. It is also called as **fundamental circuit matrix** and Tie-set matrix. This matrix gives the relation between branch currents and link currents.

If there are 'n' nodes and 'b' branches are present in a **directed graph**, then the number of links present in a co-tree, which is corresponding to the selected tree of given graph will be b-n+1.

So, the fundamental loop matrix will have 'b-n+1' rows and 'b' columns. Here, rows and columns are corresponding to the links of co-tree and branches of given graph. Hence, the **order** of fundamental loop matrix will be **(b-n+1) x b**.

The **elements of fundamental loop matrix** will be having one of these three values, +1, -1 and 0.

- The value of element will be +1 for the link of selected f-loop.
- The value of elements will be 0 for the remaining links and twigs, which are not part of the selected f-loop.
- If the direction of twig current of selected f-loop is same as that of f-loop link current, then the value of element will be +1.
- If the direction of twig current of selected f-loop is opposite to that of f-loop link current, then the value of element will be -1.

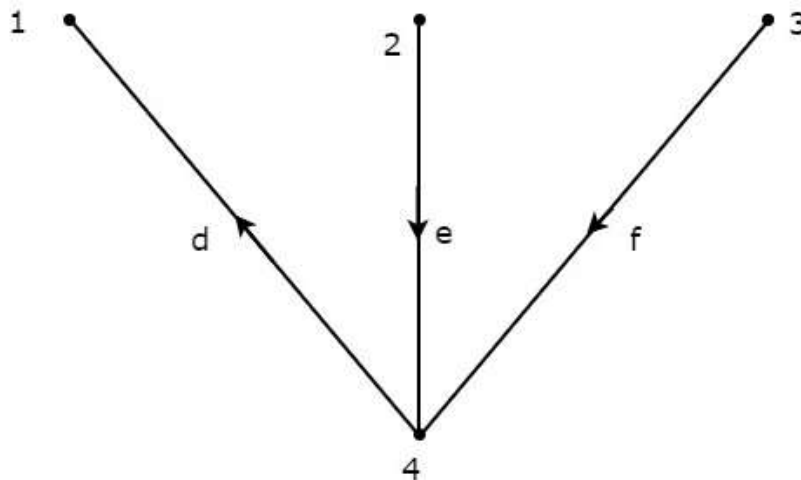
### Procedure to find Fundamental Loop Matrix

Follow these steps in order to find the fundamental loop matrix of given directed graph.

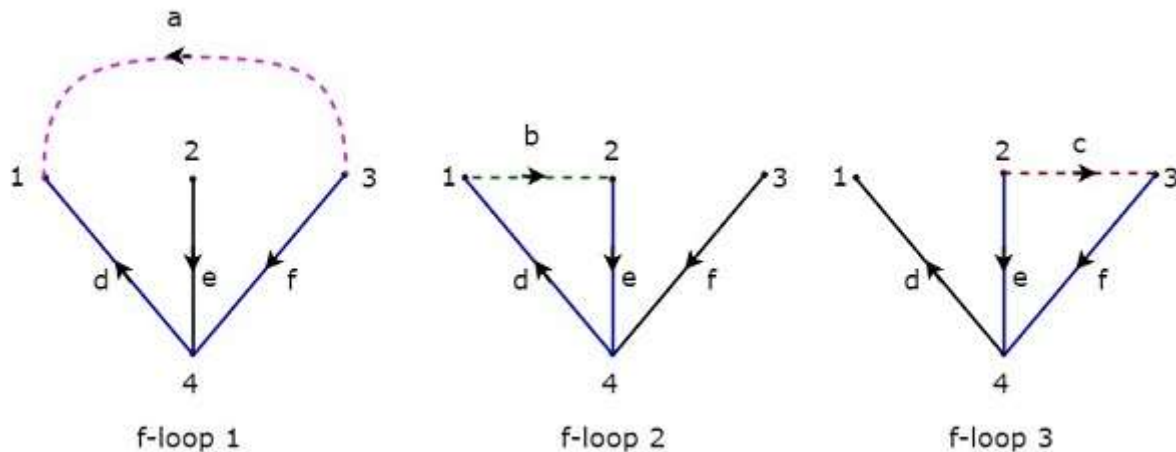
- Select a tree of given directed graph.
- By including one link at a time, we will get one f-loop. Fill the values of elements corresponding to this f-loop in a row of fundamental loop matrix.
- Repeat the above step for all links.

### Example

Take a look at the following Tree of **directed graph**, which is considered for incidence matrix.



The above Tree contains three branches d, e & f. Hence, the branches a, b & c will be the links of the Co-Tree corresponding to the above Tree. By including one link at a time to the above Tree, we will get one **f-loop**. So, there will be three f-loops, since there are three links. These three **f-loops** are shown in the following figure.



In the above figure, the branches, which are represented with colored lines form f-loops. We will get the row wise element values of Tie-set matrix from each f-loop. So, the **Tie-set matrix** of the above considered Tree will be

$$B = \begin{bmatrix} 1 & 0 & 0 & -1 & 0 & -1 \\ 0 & 1 & 0 & 1 & 1 & 0 \\ 0 & 0 & 1 & 0 & -1 & 1 \end{bmatrix}$$

The rows and columns of the above matrix represents the links and branches of given directed graph. The order of this incidence matrix is 3x6.

The **number of Fundamental loop matrices** of a directed graph will be equal to the number of Trees of that directed graph. Because, every Tree will be having one Fundamental loop matrix.

## Fundamental Cut-set Matrix

Fundamental cut set or **f-cut set** is the minimum number of branches that are removed from a graph in such a way that the original graph will become two isolated subgraphs. The f-cut set contains only **one twig** and one or more links. So, the number of f-cut sets will be equal to the number of twigs.

**Fundamental cut set matrix** is represented with letter C. This matrix gives the relation between branch voltages and twig voltages.

If there are 'n' nodes and 'b' branches are present in a **directed graph**, then the number of twigs present in a selected Tree of given graph will be n-1. So, the fundamental cut set matrix will have 'n-1' rows and 'b' columns. Here, rows and columns are corresponding to the twigs of selected tree and branches of given graph. Hence, the **order** of fundamental cut set matrix will be **(n-1) x b**.

The **elements of fundamental cut set matrix** will be having one of these three values, +1, -1 and 0.

- The value of element will be +1 for the twig of selected f-cutset.
- The value of elements will be 0 for the remaining twigs and links, which are not part of the selected f-cutset.
- If the direction of link current of selected f-cut set is same as that of f-cutset twig current, then the value of element will be +1.

- If the direction of link current of selected f-cut set is opposite to that of f-cutset twig current, then the value of element will be -1.

### Procedure to find Fundamental Cut-set Matrix

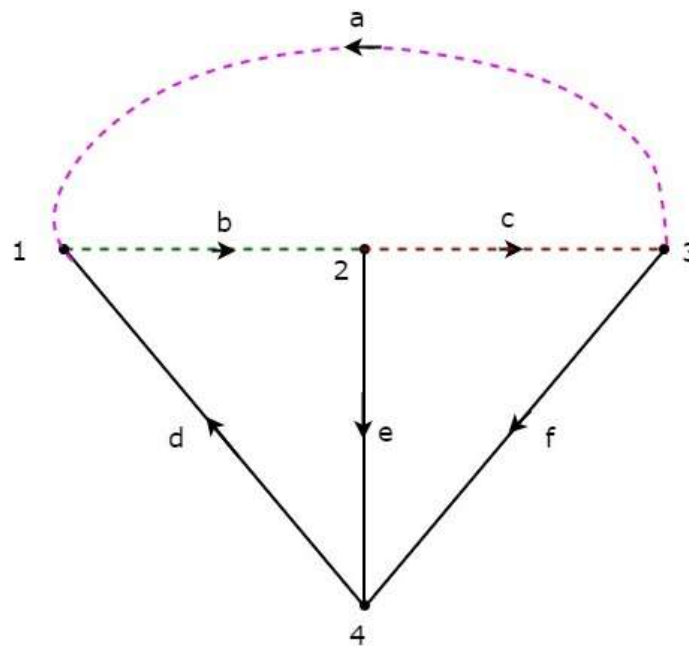
Follow these steps in order to find the fundamental cut set matrix of given directed graph.

- Select a Tree of given directed graph and represent the links with the dotted lines.
- By removing one twig and necessary links at a time, we will get one f-cut set. Fill the values of elements corresponding to this f-cut set in a row of fundamental cut set matrix.
- Repeat the above step for all twigs.

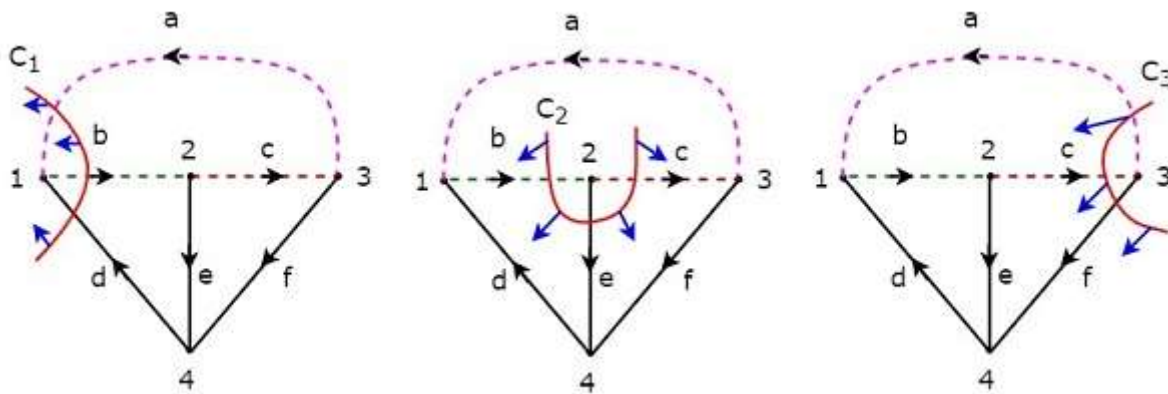
### Example

Consider the same **directed graph**, which we discussed in the section of incidence matrix. Select the branches d, e & f of this directed graph as twigs. So, the remaining branches a, b & c of this directed graph will be the links.

The **twigs** d, e & f are represented with solid lines and **links** a, b & c are represented with dotted lines in the following figure.



By removing one twig and necessary links at a time, we will get one f-cut set. So, there will be three f-cut sets, since there are three twigs. These three **f-cut sets** are shown in the following figure.



We will be having three f-cut sets by removing a set of twig and links of C<sub>1</sub>, C<sub>2</sub> and C<sub>3</sub>. We will get the row wise element values of fundamental cut set matrix from each f-cut set. So, the **fundamental cut set matrix** of the above considered Tree will be

$$C = \begin{bmatrix} 1 & -1 & 0 & 1 & 0 & 0 \\ 0 & -1 & 1 & 0 & 1 & 0 \\ 1 & 0 & -1 & 0 & 0 & 1 \end{bmatrix}$$

The rows and columns of the above matrix represents the twigs and branches of given directed graph. The order of this fundamental cut set matrix is 3x6.

The **number of Fundamental cut set matrices** of a directed graph will be equal to the number of Trees of that directed graph. Because, every Tree will be having one Fundamental cut set matrix.



# 15. Network Theory – Superposition Theorem

**Superposition theorem** is based on the concept of linearity between the response and excitation of an electrical circuit. It states that the response in a particular branch of a linear circuit when multiple independent sources are acting at the same time is equivalent to the sum of the responses due to each independent source acting at a time.

In this method, we will consider only **one independent source** at a time. So, we have to eliminate the remaining independent sources from the circuit. We can eliminate the voltage sources by shorting their two terminals and similarly, the current sources by opening their two terminals.

Therefore, we need to find the response in a particular branch '**n**' times if there are '**n**' independent sources. The response in a particular branch could be either current flowing through that branch or voltage across that branch.

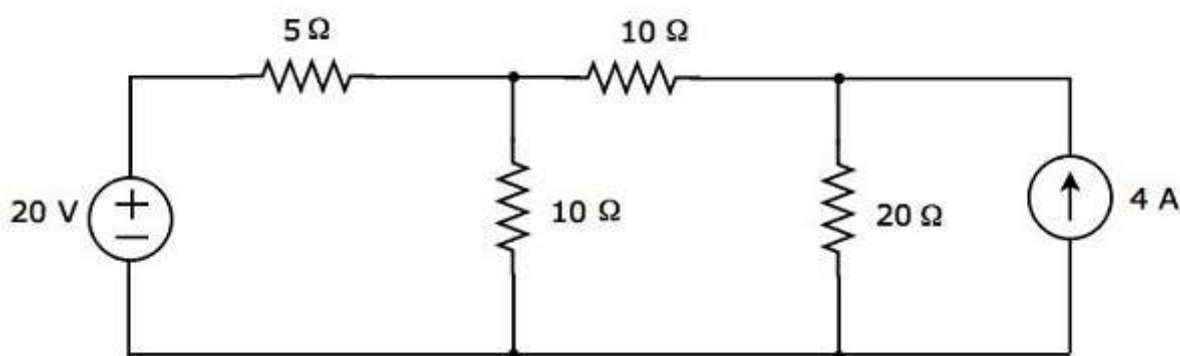
## Procedure of Superposition Theorem

Follow these steps in order to find the response in a particular branch using superposition theorem.

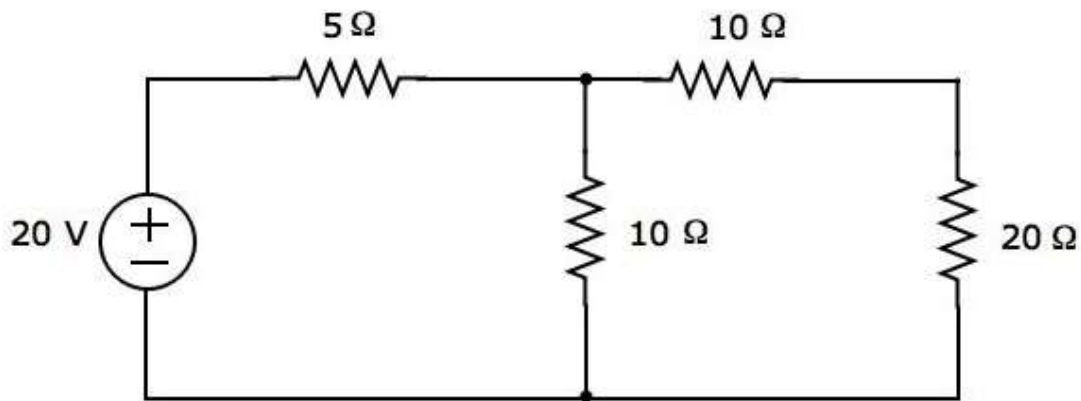
- **Step 1:** Find the response in a particular branch by considering one independent source and eliminating the remaining independent sources present in the network.
- **Step 2:** Repeat Step 1 for all independent sources present in the network.
- **Step 3:** Add all the responses in order to get the overall response in a particular branch when all independent sources are present in the network.

## Example

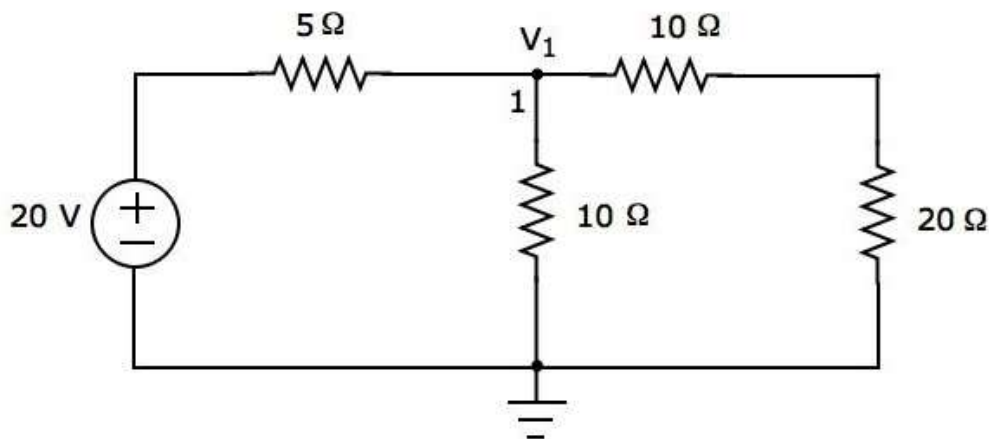
Find the current flowing through  $20\ \Omega$  resistor of the following circuit using **superposition theorem**.



**Step 1:** Let us find the current flowing through  $20\ \Omega$  resistor by considering only **20 V voltage source**. In this case, we can eliminate the 4 A current source by making open circuit of it. The modified circuit diagram is shown in the following figure.



There is only one principal node except Ground in the above circuit. So, we can use **nodal analysis** method. The node voltage  $V_1$  is labelled in the following figure. Here,  $V_1$  is the voltage from node 1 with respect to ground.



The **nodal equation** at node 1 is

$$\begin{aligned} \frac{V_1 - 20}{5} + \frac{V_1}{10} + \frac{V_1}{10 + 20} &= 0 \\ \Rightarrow \frac{6V_1 - 120 + 3V_1 + V_1}{30} &= 0 \\ \Rightarrow 10V_1 &= 120 \\ \Rightarrow V_1 &= 12 \text{ V} \end{aligned}$$

The **current flowing through 20 Ω resistor** can be found by doing the following simplification.

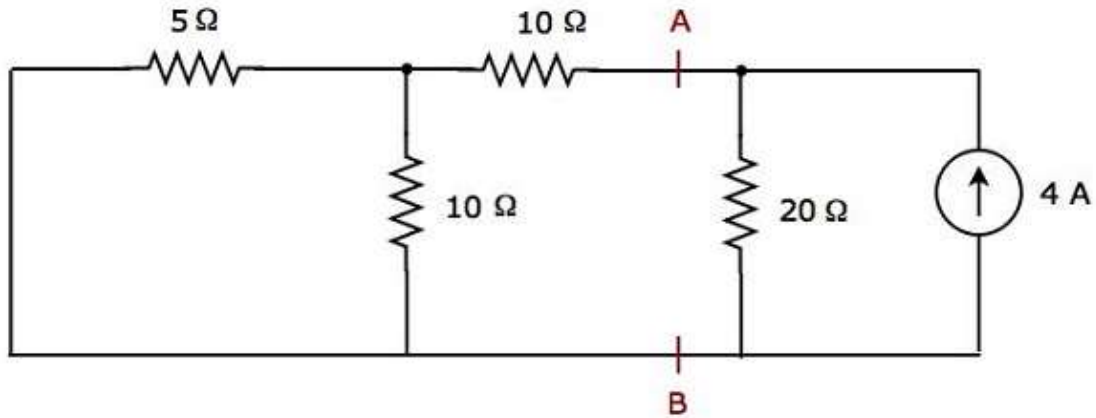
$$I_1 = \frac{V_1}{10 + 20}$$

Substitute the value of  $V_1$  in the above equation.

$$I_1 = \frac{12}{10 + 20} = \frac{12}{30} = 0.4 \text{ A}$$

Therefore, the current flowing through 20 Ω resistor is **0.4 A**, when only 20 V voltage source is considered.

**Step 2:** Let us find the current flowing through  $20\ \Omega$  resistor by considering only **4 A current source**. In this case, we can eliminate the  $20\ \text{V}$  voltage source by making short-circuit of it. The modified circuit diagram is shown in the following figure.

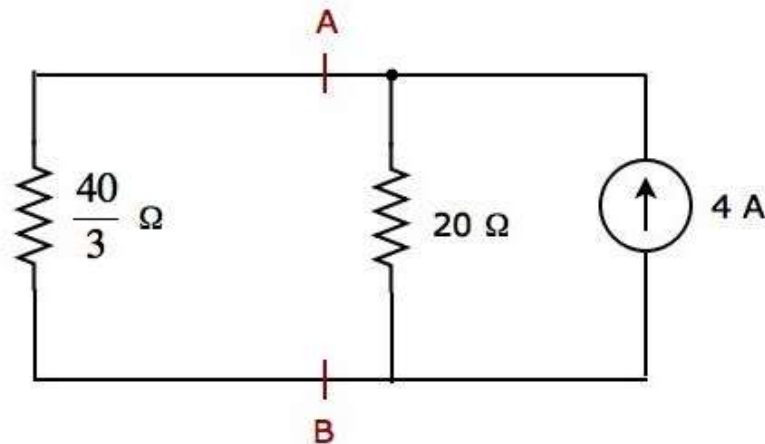


In the above circuit, there are three resistors to the left of terminals A & B. We can replace these resistors with a single **equivalent resistor**. Here,  $5\ \Omega$  &  $10\ \Omega$  resistors are connected in parallel and the entire combination is in series with  $10\ \Omega$  resistor.

The **equivalent resistance** to the left of terminals A & B will be

$$R_{AB} = \left( \frac{5 \times 10}{5 + 10} \right) + 10 = \frac{10}{3} + 10 = \frac{40}{3}\ \Omega$$

The simplified circuit diagram is shown in the following figure.



We can find the current flowing through  $20\ \Omega$  resistor, by using **current division principle**.

$$I_2 = I_S \left( \frac{R_1}{R_1 + R_2} \right)$$

Substitute  $I_S = 4\ \text{A}$ ,  $R_1 = \frac{40}{3}\ \Omega$  and  $R_2 = 20\ \Omega$  in the above equation.

$$I_2 = 4 \left( \frac{40/3}{40/3 + 20} \right) = 4 \left( \frac{40}{100} \right) = 1.6\ \text{A}$$

Therefore, the current flowing through  $20\ \Omega$  resistor is **1.6 A**, when only 4 A current source is considered.

**Step 3:** We will get the current flowing through  $20\ \Omega$  resistor of the given circuit by doing the **addition of two currents** that we got in step 1 and step 2. Mathematically, it can be written as

$$I = I_1 + I_2$$

Substitute, the values of  $I_1$  and  $I_2$  in the above equation.

$$I = 0.4 + 1.6 = 2\ \text{A}$$

Therefore, the current flowing through  $20\ \Omega$  resistor of given circuit is **2 A**.

**Note:** We can't apply superposition theorem directly in order to find the amount of **power** delivered to any resistor that is present in a linear circuit, just by doing the addition of powers delivered to that resistor due to each independent source. Rather, we can calculate either total current flowing through or voltage across that resistor by using superposition theorem and from that, we can calculate the amount of power delivered to that resistor using  $I^2R$  or  $\frac{V^2}{R}$ .

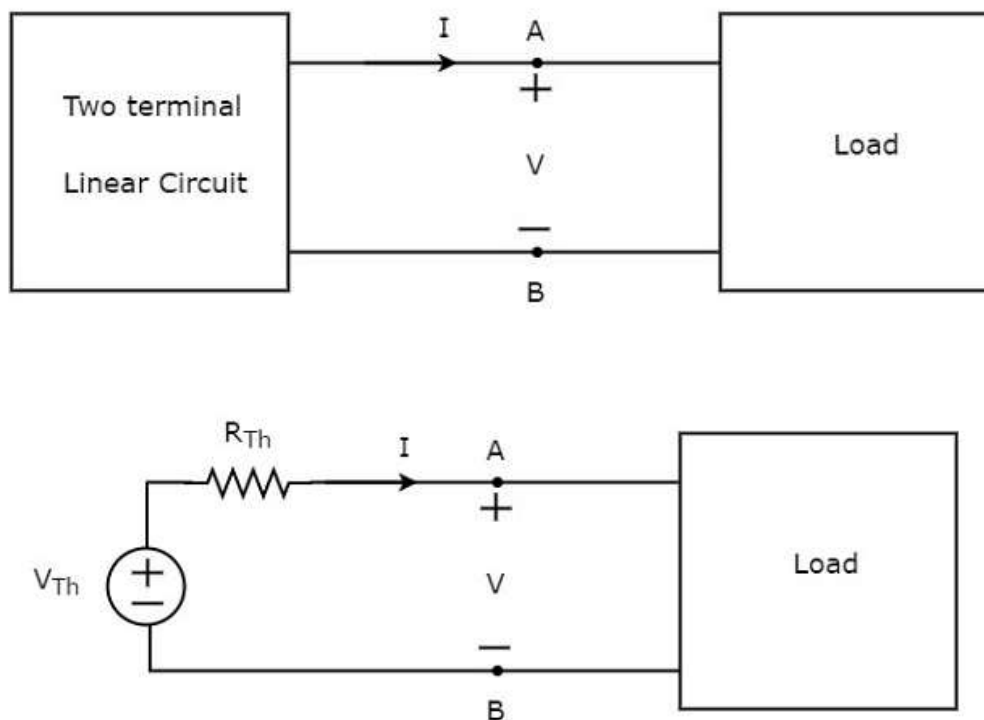
# 16. Network Theory – Thevenin's Theorem

**Thevenin's theorem** states that any two terminal linear network or circuit can be represented with an equivalent network or circuit, which consists of a voltage source in series with a resistor. It is known as Thevenin's equivalent circuit. A linear circuit may contain independent sources, dependent sources, and resistors.

If the circuit contains multiple independent sources, dependent sources, and resistors, then the response in an element can be easily found by replacing the entire network to the left of that element with a **Thevenin's equivalent circuit**.

The **response in an element** can be the voltage across that element, current flowing through that element, or power dissipated across that element.

This concept is illustrated in following figures.



**Thevenin's equivalent circuit** resembles a practical voltage source. Hence, it has a voltage source in series with a resistor.

- The voltage source present in the Thevenin's equivalent circuit is called as Thevenin's equivalent voltage or simply **Thevenin's voltage,  $V_{Th}$** .
- The resistor present in the Thevenin's equivalent circuit is called as Thevenin's equivalent resistor or simply **Thevenin's resistor,  $R_{Th}$** .

## Methods of Finding Thevenin's Equivalent Circuit

There are three methods for finding a Thevenin's equivalent circuit. Based on the **type of sources** that are present in the network, we can choose one of these three methods. Now, let us discuss two methods one by one. We will discuss the third method in the next chapter.

### Method 1

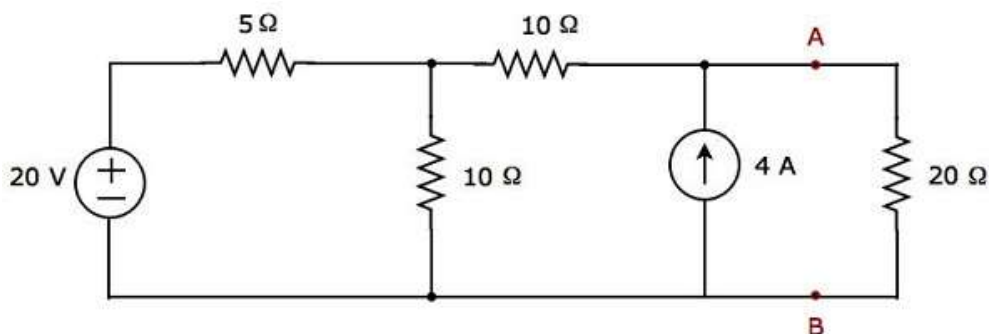
Follow these steps in order to find the Thevenin's equivalent circuit, when only the **sources of independent type** are present.

- **Step 1:** Consider the circuit diagram by opening the terminals with respect to which the Thevenin's equivalent circuit is to be found.
- **Step 2:** Find Thevenin's voltage  $V_{Th}$  across the open terminals of the above circuit.
- **Step 3:** Find Thevenin's resistance  $R_{Th}$  across the open terminals of the above circuit by eliminating the independent sources present in it.
- **Step 4:** Draw the **Thevenin's equivalent circuit** by connecting a Thevenin's voltage  $V_{Th}$  in series with a Thevenin's resistance  $R_{Th}$ .

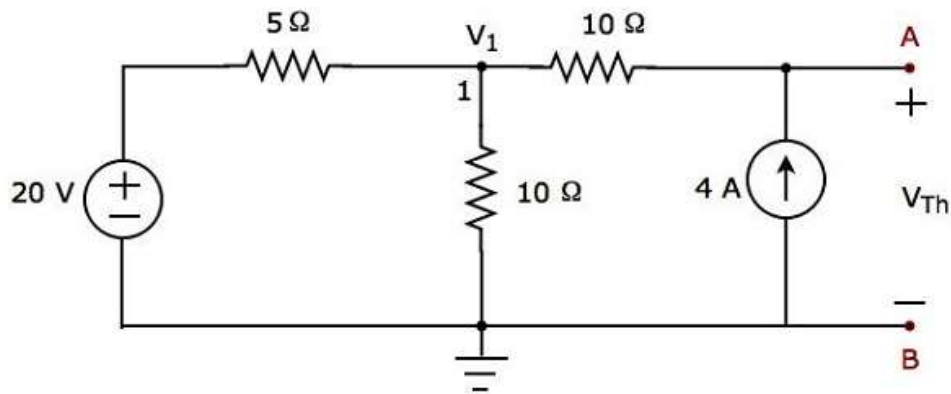
Now, we can find the response in an element that lies to the right side of Thevenin's equivalent circuit.

### Example

Find the current flowing through  $20\ \Omega$  resistor by first finding a **Thevenin's equivalent circuit** to the left of terminals A and B.



**Step 1:** In order to find the Thevenin's equivalent circuit to the left side of terminals A & B, we should remove the  $20\ \Omega$  resistor from the network by **opening the terminals A & B**. The modified circuit diagram is shown in the following figure.



### Step 2: Calculation of Thevenin's voltage $V_{Th}$ .

There is only one principal node except Ground in the above circuit. So, we can use **nodal analysis** method. The node voltage  $V_1$  and Thevenin's voltage  $V_{Th}$  are labelled in the above figure. Here,  $V_1$  is the voltage from node 1 with respect to Ground and  $V_{Th}$  is the voltage across 4 A current source.

- The **nodal equation** at node 1 is

$$\begin{aligned} \frac{V_1 - 20}{5} + \frac{V_1}{10} - 4 &= 0 \\ \Rightarrow \frac{2V_1 - 40 + V_1 - 40}{10} &= 0 \\ \Rightarrow 3V_1 - 80 &= 0 \\ \Rightarrow V_1 &= \frac{80}{3} \text{ V} \end{aligned}$$

- The voltage across series branch  $10\ \Omega$  resistor is

$$V_{10\ \Omega} = (-4)(10) = -40 \text{ V}$$

- There are two meshes in the above circuit. The **KVL equation** around second mesh is

$$V_1 - V_{10\ \Omega} - V_{Th} = 0$$

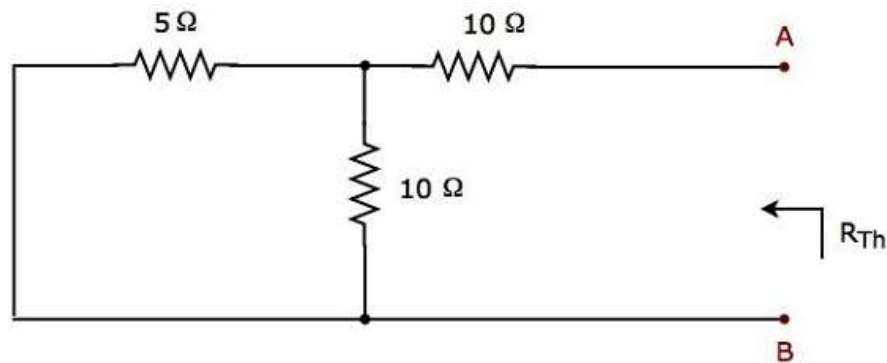
- Substitute the values of  $V_1$  and  $V_{10\ \Omega}$  in the above equation.

$$\begin{aligned} \frac{80}{3} - (-40) - V_{Th} &= 0 \\ V_{Th} &= \frac{80 + 120}{3} = \frac{200}{3} \text{ V} \end{aligned}$$

- Therefore, the Thevenin's voltage is  $V_{Th} = \frac{200}{3} \text{ V}$ .

### Step 3: Calculation of Thevenin's resistance $R_{Th}$ .

Short circuit the voltage source and open circuit the current source of the above circuit in order to calculate the Thevenin's resistance  $R_{Th}$  across the terminals A & B. The **modified circuit diagram** is shown in the following figure.

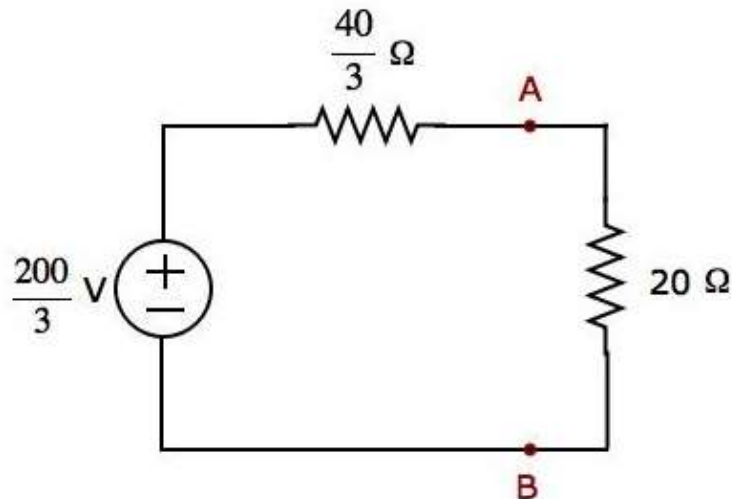


The Thevenin's resistance across terminals A & B will be

$$R_{Th} = \left( \frac{5 \times 10}{5 + 10} \right) + 10 = \frac{10}{3} + 10 = \frac{40}{3} \Omega$$

Therefore, the Thevenin's resistance is  $R_{Th} = \frac{40}{3} \Omega$ .

**Step 4:** The Thevenin's equivalent circuit is placed to the left of terminals A & B in the given circuit. This circuit diagram is shown in the following figure.



The current flowing through the 20 Ω resistor can be found by substituting the values of  $V_{Th}$ ,  $R_{Th}$  and  $R$  in the following equation.

$$I = \frac{V_{Th}}{R_{Th} + R}$$

$$I = \frac{200/3}{\frac{40}{3} + 20} = \frac{200}{100} = 2 \text{ A}$$

Therefore, the current flowing through the 20 Ω resistor is **2 A**.



## Method 2

Follow these steps in order to find the Thevenin's equivalent circuit, when the **sources of both independent type and dependent type** are present.

- **Step 1:** Consider the circuit diagram by opening the terminals with respect to which, the Thevenin's equivalent circuit is to be found.
- **Step 2:** Find Thevenin's voltage  $V_{Th}$  across the open terminals of the above circuit.
- **Step 3:** Find the short circuit current  $I_{Sc}$  by shorting the two opened terminals of the above circuit.
- **Step 4:** Find Thevenin's resistance  $R_{Th}$  by using the following formula.

$$R_{Th} = \frac{V_{Th}}{I_{Sc}}$$

**Step 5:** Draw the **Thevenin's equivalent circuit** by connecting a Thevenin's voltage  $V_{Th}$  in series with a Thevenin's resistance  $R_{Th}$ .

Now, we can find the response in an element that lies to the right side of the Thevenin's equivalent circuit.

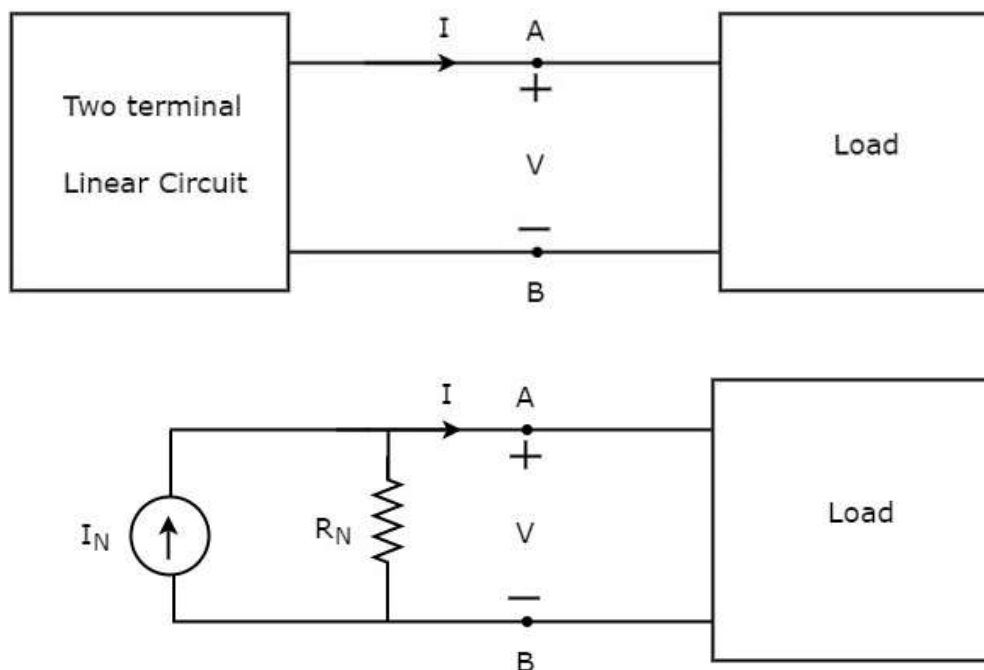
# 17. Network Theory – Norton's Theorem

**Norton's theorem** is similar to Thevenin's theorem. It states that any two terminal linear network or circuit can be represented with an equivalent network or circuit, which consists of a current source in parallel with a resistor. It is known as **Norton's equivalent circuit**. A linear circuit may contain independent sources, dependent sources and resistors.

If a circuit has multiple independent sources, dependent sources, and resistors, then the response in an element can be easily found by replacing the entire network to the left of that element with a **Norton's equivalent circuit**.

The **response in an element** can be the voltage across that element, current flowing through that element or power dissipated across that element.

This concept is illustrated in following figures.



**Norton's equivalent circuit** resembles a practical current source. Hence, it is having a current source in parallel with a resistor.

- The current source present in the Norton's equivalent circuit is called as Norton's equivalent current or simply **Norton's current  $I_N$** .
- The resistor present in the Norton's equivalent circuit is called as Norton's equivalent resistor or simply **Norton's resistor  $R_N$** .

## Methods of Finding Norton's Equivalent Circuit

---

There are **three methods** for finding a Norton's equivalent circuit. Based on the type of sources that are present in the network, we can choose one of these three methods. Now, let us discuss these three methods one by one.

### Method 1

Follow these steps in order to find the Norton's equivalent circuit, when only the **sources of independent type** are present.

- **Step 1:** Consider the circuit diagram by opening the terminals with respect to which, the Norton's equivalent circuit is to be found.
- **Step 2:** Find the Norton's current  $I_N$  by shorting the two opened terminals of the above circuit.
- **Step 3:** Find the Norton's resistance  $R_N$  across the open terminals of the circuit considered in Step1 by eliminating the independent sources present in it. Norton's resistance  $R_N$  will be same as that of Thevenin's resistance  $R_{Th}$ .
- **Step 4:** Draw the **Norton's equivalent circuit** by connecting a Norton's current  $I_N$  in parallel with Norton's resistance  $R_N$ .

Now, we can find the response in an element that lies to the right side of Norton's equivalent circuit.

### Method 2

Follow these steps in order to find the Norton's equivalent circuit, when the **sources of both independent type and dependent type** are present.

- **Step 1:** Consider the circuit diagram by opening the terminals with respect to which the Norton's equivalent circuit is to be found.
- **Step 2:** Find the open circuit voltage  $V_{oc}$  across the open terminals of the above circuit.
- **Step 3:** Find the Norton's current  $I_N$  by shorting the two opened terminals of the above circuit.
- **Step 4:** Find Norton's resistance  $R_N$  by using the following formula.

$$R_N = \frac{V_{oc}}{I_N}$$

- **Step 5:** Draw the Norton's equivalent circuit by connecting a Norton's current  $I_N$  in parallel with Norton's resistance  $R_N$ .

Now, we can find the response in an element that lies to the right side of Norton's equivalent circuit.

### Method 3

This is an alternate method for finding a Norton's equivalent circuit.

**Step 1:** Find a **Thevenin's equivalent circuit** between the desired two terminals. We know that it consists of a Thevenin's voltage source,  $V_{Th}$  and Thevenin's resistor,  $R_{Th}$ .

**Step 2:** Apply **source transformation technique** to the above Thevenin's equivalent circuit. We will get the Norton's equivalent circuit. Here,

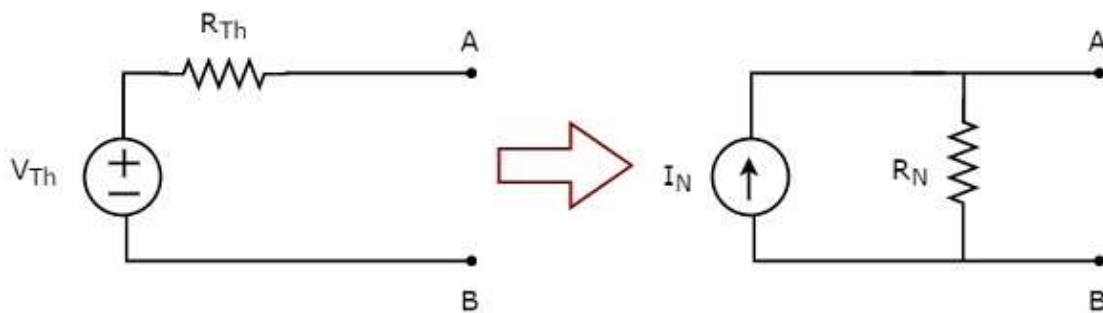
Norton's current,

$$I_N = \frac{V_{Th}}{R_{Th}}$$

Norton's resistance,

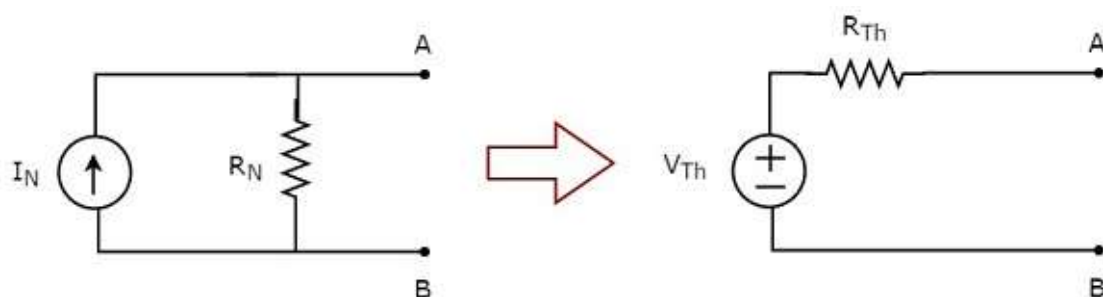
$$R_N = R_{Th}$$

This concept is illustrated in the following figure.



Now, we can find the response in an element by placing Norton's equivalent circuit to the left of that element.

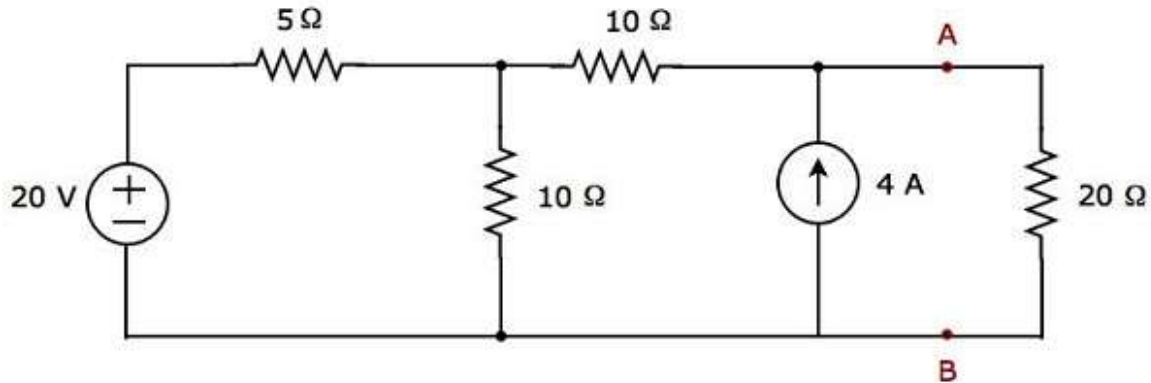
**Note:** Similarly, we can find the Thevenin's equivalent circuit by finding a Norton's equivalent circuit first and then apply source transformation technique to it. This concept is illustrated in the following figure.



This is the Method 3 for finding a Thevenin's equivalent circuit.

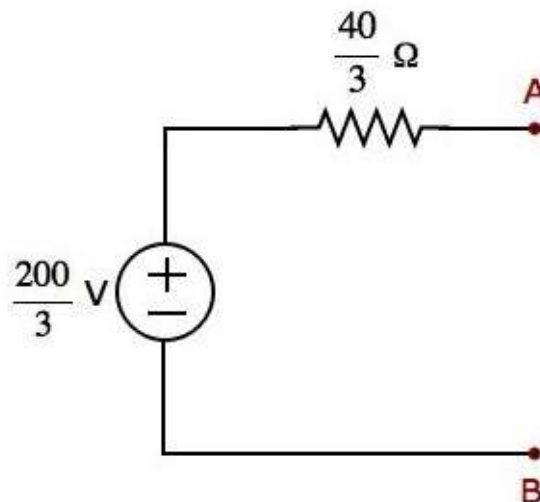
### Example

Find the current flowing through  $20\ \Omega$  resistor by first finding a **Norton's equivalent circuit** to the left of terminals A and B.



Let us solve this problem using **Method 3**.

**Step 1:** In previous chapter, we calculated the Thevenin's equivalent circuit to the left side of terminals A & B. We can use this circuit now. It is shown in the following figure.



Here, Thevenin's voltage,  $V_{Th} = \frac{200}{3}\text{ V}$  and Thevenin's resistance,  $R_{Th} = \frac{40}{3}\ \Omega$ .

**Step 2:** Apply **source transformation technique** to the above Thevenin's equivalent circuit.

Substitute the values of  $V_{Th}$  and  $R_{Th}$  in the following formula of **Norton's current**.

$$I_N = \frac{V_{Th}}{R_{Th}}$$

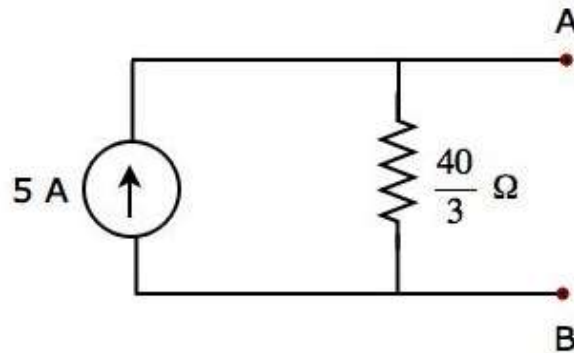
$$\Rightarrow I_N = \frac{200/3}{40/3} = 5\text{ A}$$

Therefore, Norton's current  $I_N$  is **5 A**.

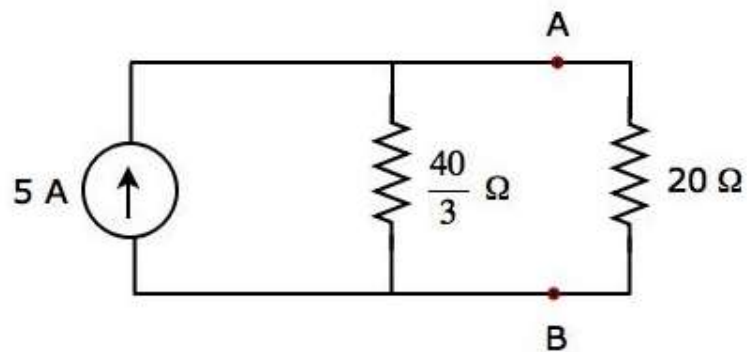
We know that Norton's resistance,  $R_N$  is same as that of Thevenin's resistance  $R_{Th}$ .

$$R_N = \frac{40}{3}\ \Omega$$

The Norton's equivalent circuit corresponding to the above Thevenin's equivalent circuit is shown in the following figure.



Now, place the Norton's equivalent circuit to the left of the terminals A & B of the given circuit.



By using **current division principle**, the current flowing through the  $20\ \Omega$  resistor will be

$$I_{20\ \Omega} = 5 \left( \frac{40/3}{\frac{40}{3} + 20} \right)$$

$$\Rightarrow I_{20\ \Omega} = 5 \left( \frac{40}{100} \right) = 2\ \text{A}$$

Therefore, the current flowing through the  $20\ \Omega$  resistor is **2 A**.

# 18. Network Theory – Maximum Power Transfer Theorem

The amount of power received by a load is an important parameter in electrical and electronic applications. In DC circuits, we can represent the load with a resistor having resistance of  $R_L$  ohms. Similarly, in AC circuits, we can represent it with a complex load having an impedance of  $Z_L$  ohms.

**Maximum power transfer theorem** states that the DC voltage source will deliver maximum power to the variable load resistor only when the load resistance is equal to the source resistance.

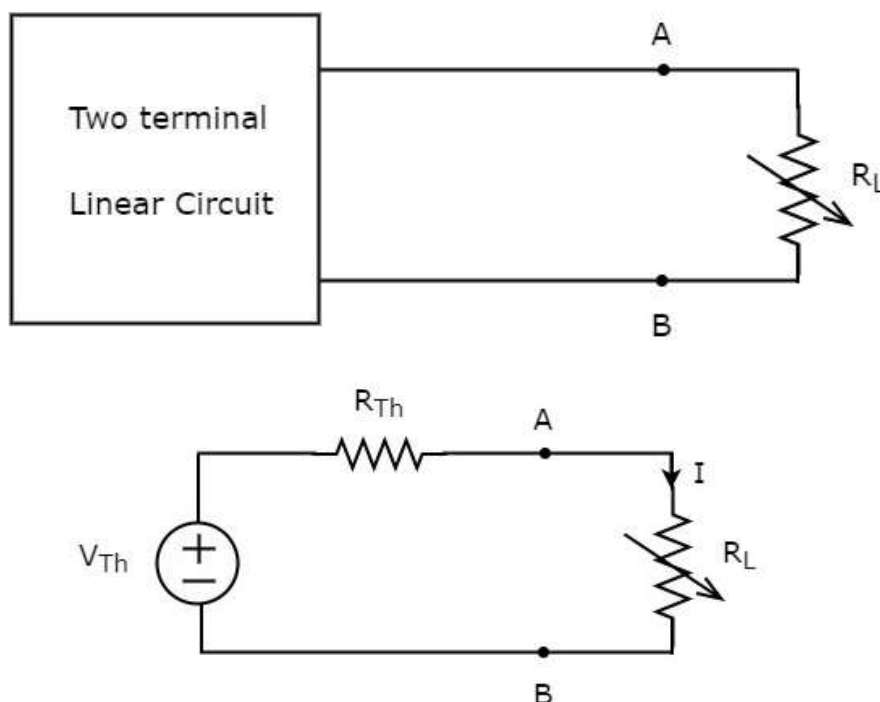
Similarly, **Maximum power transfer theorem** states that the AC voltage source will deliver maximum power to the variable complex load only when the load impedance is equal to the complex conjugate of source impedance.

In this chapter, let us discuss about the maximum power transfer theorem for DC circuits.

## Proof of Maximum Power Transfer Theorem

Replace any two terminal linear network or circuit to the left side of variable load resistor having resistance of  $R_L$  ohms with a Thevenin's equivalent circuit. We know that Thevenin's equivalent circuit resembles a practical voltage source.

This concept is illustrated in following figures.



The amount of power dissipated across the load resistor is

$$P_L = I^2 R_L$$

Substitute  $I = \frac{V_{Th}}{R_{Th} + R_L}$  in the above equation.

$$P_L = \left( \frac{V_{Th}}{R_{Th} + R_L} \right)^2 R_L$$

$$\Rightarrow P_L = V_{Th}^2 \left\{ \frac{R_L}{(R_{Th} + R_L)^2} \right\} \quad \text{Equation 1}$$

### Condition for Maximum Power Transfer

For maximum or minimum, first derivative will be zero. So, differentiate Equation 1 with respect to  $R_L$  and make it equal to zero.

$$\frac{dP_L}{dR_L} = V_{Th}^2 \left\{ \frac{(R_{Th} + R_L)^2 \times 1 - R_L \times 2(R_{Th} + R_L)}{(R_{Th} + R_L)^4} \right\} = 0$$

$$\Rightarrow (R_{Th} + R_L)^2 - 2R_L(R_{Th} + R_L) = 0$$

$$\Rightarrow (R_{Th} + R_L)(R_{Th} + R_L - 2R_L) = 0$$

$$\Rightarrow (R_{Th} - R_L) = 0$$

$$\Rightarrow R_{Th} = R_L \text{ or } R_L = R_{Th}$$

Therefore, the **condition for maximum power** dissipation across the load is  $R_L = R_{Th}$ . That means, if the value of load resistance is equal to the value of source resistance i.e., Thevenin's resistance, then the power dissipated across the load will be of maximum value.

### The value of Maximum Power Transfer

Substitute  $R_L = R_{Th}$  &  $P_L = P_{L,Max}$  in Equation 1.

$$P_{L,Max} = V_{Th}^2 \left\{ \frac{R_{Th}}{(R_{Th} + R_{Th})^2} \right\}$$

$$P_{L,Max} = V_{Th}^2 \left\{ \frac{R_{Th}}{4 R_{Th}^2} \right\}$$

$$\Rightarrow P_{L,Max} = \frac{V_{Th}^2}{4 R_{Th}}$$

$$\Rightarrow P_{L,Max} = \frac{V_{Th}^2}{4 R_L}, \text{ since } R_L = R_{Th}$$

Therefore, the **maximum amount of power** transferred to the load is

$$P_{L,Max} = \frac{V_{Th}^2}{4 R_L} = \frac{V_{Th}^2}{4 R_{Th}}$$



## Efficiency of Maximum Power Transfer

We can calculate the efficiency of maximum power transfer,  $\eta_{Max}$  using following formula.

$$\eta_{Max} = \frac{P_{L,Max}}{P_S} \quad \text{Equation 2}$$

Where,

- $P_{L,Max}$  is the maximum amount of power transferred to the load.
- $P_S$  is the amount of power generated by the source.

The **amount of power generated** by the source is

$$P_S = I^2 R_{Th} + I^2 R_L$$

$$\Rightarrow P_S = 2I^2 R_{Th}, \text{ since } R_L = R_{Th}$$

- Substitute  $I = \frac{V_{Th}}{2R_{Th}}$  in the above equation.

$$P_S = 2 \left( \frac{V_{Th}}{2R_{Th}} \right)^2 R_{Th}$$

$$\Rightarrow P_S = 2 \left( \frac{V_{Th}^2}{4R_{Th}^2} \right) R_{Th}$$

$$\Rightarrow P_S = \frac{V_{Th}^2}{2R_{Th}}$$

- Substitute the values of  $P_{L,Max}$  and  $P_S$  in Equation 2.

$$\eta_{Max} = \frac{\left( \frac{V_{Th}^2}{4R_{Th}} \right)}{\left( \frac{V_{Th}^2}{2R_{Th}} \right)}$$

$$\Rightarrow \eta_{Max} = \frac{1}{2}$$

We can represent the efficiency of maximum power transfer in terms of **percentage** as follows:

$$\% \eta_{Max} = \eta_{Max} \times 100 \%$$

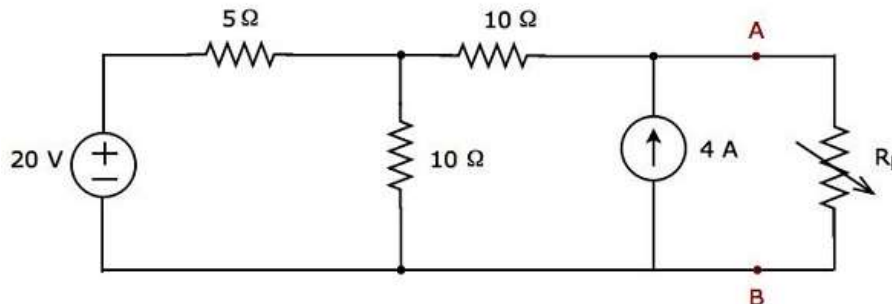
$$\Rightarrow \% \eta_{Max} = \left( \frac{1}{2} \right) \times 100 \%$$

$$\Rightarrow \% \eta_{Max} = 50 \%$$

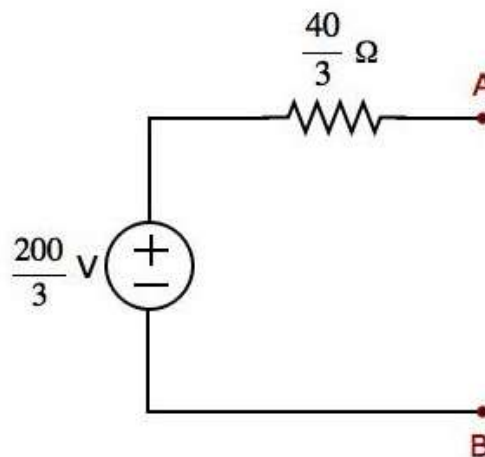
Therefore, the efficiency of maximum power transfer is **50 %**.

### Example

Find the **maximum power** that can be delivered to the load resistor  $R_L$  of the circuit shown in the following figure.

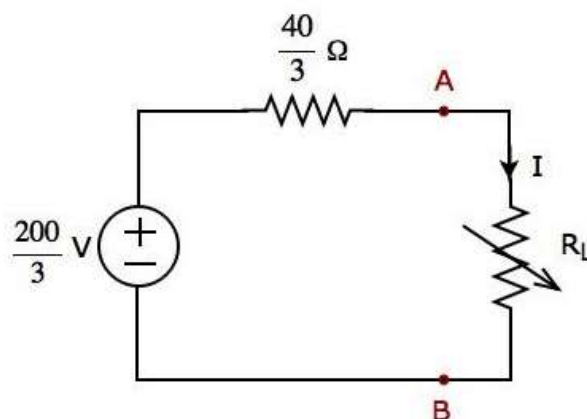


**Step 1:** In Thevenin's Theorem chapter, we calculated the Thevenin's equivalent circuit to the left side of terminals A & B. We can use this circuit now. It is shown in the following figure.



Here, Thevenin's voltage  $V_{Th} = \frac{200}{3}$  V and Thevenin's resistance  $R_{Th} = \frac{40}{3}$  Ω.

**Step 2:** Replace the part of the circuit, which is left side of terminals A & B of the given circuit with the above Thevenin's equivalent circuit. The resultant circuit diagram is shown in the following figure.



**Step 3:** We can find the maximum power that will be delivered to the load resistor,  $R_L$  by using the following formula.

$$P_{L,Max} = \frac{V_{Th}^2}{4 R_{Th}}$$

Substitute  $V_{Th} = \frac{200}{3}$  V and  $R_{Th} = \frac{40}{3}$   $\Omega$  in the above formula.

$$P_{L,Max} = \frac{\left(\frac{200}{3}\right)^2}{4 \left(\frac{40}{3}\right)}$$

$$P_{L,Max} = \frac{250}{3} \text{ W}$$

Therefore, the **maximum power** that will be delivered to the load resistor  $R_L$  of the given circuit is  $\frac{250}{3}$  W.

# 19. Network Theory – Response of DC Circuits

If the output of an electric circuit for an input varies with respect to time, then it is called as **time response**. The time response consists of following two parts.

- Transient Response
- Steady state Response

In this chapter, first let us discuss about these two responses and then observe these two responses in a series RL circuit, when it is excited by a DC voltage source.

## Transient Response

---

After applying an input to an electric circuit, the output takes certain time to reach steady state. So, the output will be in transient state till it goes to a steady state. Therefore, the response of the electric circuit during the transient state is known as **transient response**.

The transient response will be zero for large values of 't'. Ideally, this value of 't' should be infinity. But, practically **five time constants** are sufficient.

## Presence or Absence of Transients

Transients occur in the response due to **sudden change** in the sources that are applied to the electric circuit and / or due to switching action. There are two possible switching actions. Those are opening switch and closing switch.

- The **transient** part will **not present** in the response of an electrical circuit or network, if it contains only resistances. Because **resistor** is having the ability to adjust any amount of voltage and current.
- The **transient part occurs** in the response of an electrical circuit or network due to the presence of energy storing elements such as **inductor and capacitor**. Because they can't change the energy stored in those elements instantly.

## Inductor Behavior

Assume the switching action takes place at  $t = 0$ . **Inductor current** does not change instantaneously, when the switching action takes place. That means, the value of inductor current just after the switching action will be same as that of just before the switching action.

Mathematically, it can be represented as

$$i_L(0^+) = i_L(0^-)$$

## Capacitor Behavior

The **capacitor voltage** does not change instantaneously similar to the inductor current, when the switching action takes place. That means, the value of capacitor voltage just after the switching action will be same as that of just before the switching action.

Mathematically, it can be represented as

$$v_C(0^+) = v_C(0^-)$$

## Steady state Response

---

The part of the time response that remains even after the transient response has become zero value for large values of 't' is known as **steady state response**. This means, there won't be any transient part in the response during steady state.

### Inductor Behavior

If the independent source is connected to the electric circuit or network having one or more inductors and resistors (optional) for a long time, then that electric circuit or network is said to be in steady state. Therefore, the energy stored in the inductor(s) of that electric circuit is of maximum and constant.

Mathematically, it can be represented as

$$W_L = \frac{Li_L^2}{2} = \text{Maximum \& constant}$$

$$\Rightarrow i_L = \text{Maximum \& constant}$$

Therefore, inductor acts as a **constant current source** in steady state.

The voltage across inductor will be

$$V_L = L \frac{di_L}{dt} = 0 \text{ V}$$

So, the inductor acts as a **short circuit** in steady state.

### Capacitor Behavior

If the independent source is connected to the electric circuit or network having one or more capacitors and resistors (optional) for a long time, then that electric circuit or network is said to be in steady state. Therefore, the energy stored in the capacitor(s) of that electric circuit is of maximum and constant.

Mathematically, it can be represented as

$$W_C = \frac{Cv_C^2}{2} = \text{Maximum \& constant}$$

$$\Rightarrow v_C = \text{Maximum \& constant}$$

Therefore, capacitor acts as a **constant voltage source** in steady state.

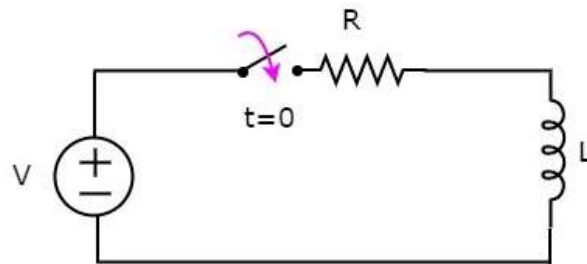
The current flowing through the capacitor will be

$$i_C = C \frac{dv_C}{dt} = 0 \text{ A}$$

So, the capacitor acts as an **open circuit** in steady state.

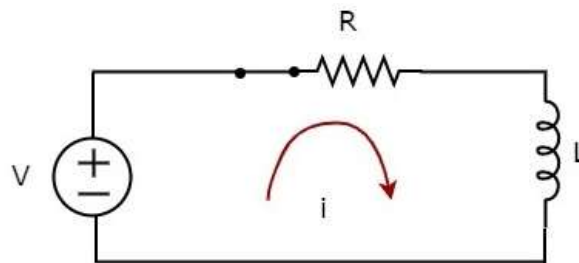
## Finding the Response of Series RL Circuit

Consider the following **series RL circuit** diagram.



In the above circuit, the **switch** was kept **open** up to  $t=0$  and it was closed at  $t=0$ . So, the DC voltage source having  $V$  volts is not connected to the series RL circuit up to this instant. Therefore, there is **no initial current** flows through inductor.

The circuit diagram, when the **switch** is in **closed** position is shown in the following figure.



Now, the current  $i$  flows in the entire circuit, since the DC voltage source having  $V$  volts is connected to the series RL circuit.

Now, apply **KVL** around the loop.

$$V = Ri + L \frac{di}{dt}$$

$$\frac{di}{dt} + \left(\frac{R}{L}\right)i = \frac{V}{L}$$

**Equation 1**

The above equation is a first order differential equation and it is in the form of

$$\frac{dy}{dx} + Py = Q$$

**Equation 2**

By **comparing** Equation 1 and Equation 2, we will get the following relations.

$$x = t$$

$$y = i$$

$$P = \frac{R}{L}$$

$$Q = \frac{V}{L}$$

The **solution** of Equation 2 will be

$$ye^{\int P dx} = \int Q e^{\int P dx} dx + k$$

**Equation 3**

Where,  $k$  is the constant.

Substitute, the values of x, y, P & Q in Equation 3.

$$\begin{aligned}
 i e^{\int \left(\frac{R}{L}\right) dt} &= \int \left(\frac{V}{L}\right) \left(e^{\int \left(\frac{R}{L}\right) dt}\right) dt + k \\
 \Rightarrow i e^{\left(\frac{R}{L}\right)t} &= \frac{V}{L} \int e^{\left(\frac{R}{L}\right)t} dt + k \\
 \Rightarrow i e^{\left(\frac{R}{L}\right)t} &= \frac{V}{L} \left\{ \frac{e^{\left(\frac{R}{L}\right)t}}{\frac{R}{L}} \right\} + k \\
 \Rightarrow i &= \frac{V}{R} + k e^{-\left(\frac{R}{L}\right)t}
 \end{aligned}$$

**Equation 4**

We know that there is no initial current in the circuit. Hence, substitute,  $t = 0$  and  $i = 0$  in Equation 4 in order to find the value of the constant  $k$ .

$$\begin{aligned}
 0 &= \frac{V}{R} + k e^{-\left(\frac{R}{L}\right)(0)} \\
 0 &= \frac{V}{R} + k(1) \\
 k &= -\frac{V}{R}
 \end{aligned}$$

Substitute, the value of k in Equation 4.

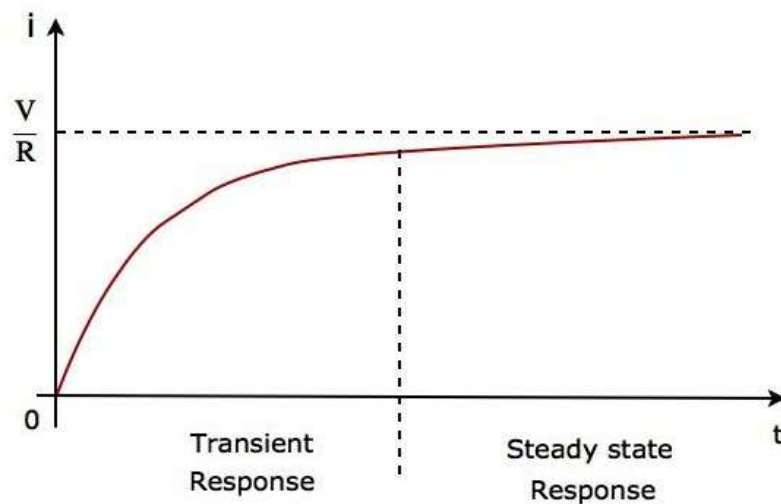
$$\begin{aligned}
 i &= \frac{V}{R} + \left(-\frac{V}{R}\right) e^{-\left(\frac{R}{L}\right)t} \\
 i &= \frac{V}{R} - \frac{V}{R} e^{-\left(\frac{R}{L}\right)t}
 \end{aligned}$$

Therefore, the **current** flowing through the circuit is

$$i = -\frac{V}{R} e^{-\left(\frac{R}{L}\right)t} + \frac{V}{R} \quad \text{Equation 5}$$

So, the response of the series RL circuit, when it is excited by a DC voltage source, has the following two terms.

- The first term  $-\frac{V}{R} e^{-\left(\frac{R}{L}\right)t}$  corresponds with the **transient response**.
- The second term  $\frac{V}{R}$  corresponds with the **steady state response**. These two responses are shown in the following figure.



We can re-write the Equation 5 as follows:

$$i = \frac{V}{R} \left( 1 - e^{-\left(\frac{R}{L}\right)t} \right)$$

$$\Rightarrow i = \frac{V}{R} \left( 1 - e^{-\left(\frac{t}{\tau}\right)} \right) \quad \text{Equation 6}$$

Where,  $\tau$  is the **time constant** and its value is equal to  $\frac{L}{R}$ .

Both Equation 5 and Equation 6 are same. But, we can easily understand the above waveform of current flowing through the circuit from Equation 6 by substituting a few values of  $t$  like  $0, \tau, 2\tau, 5\tau$ , etc.

In the above waveform of current flowing through the circuit, the transient response will present up to five time constants from zero, whereas the steady state response will present from five time constants onwards.

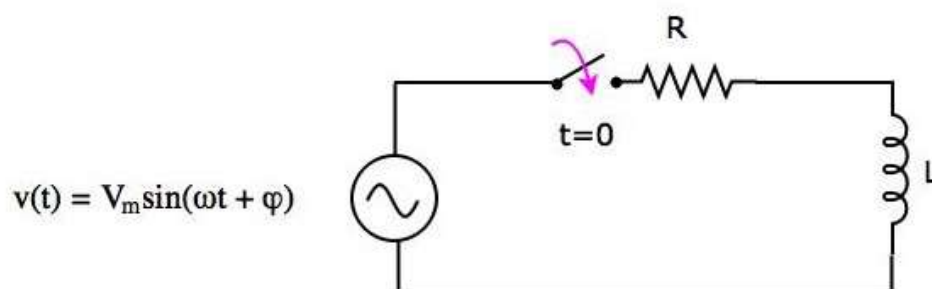


## 20. Network Theory – Response of AC Circuits

In the previous chapter, we discussed the transient response and steady state response of DC circuit. In this chapter, let us discuss the **response of AC circuit**. The concepts of both transient response and steady state response, which we discussed in the previous chapter, will be useful here too.

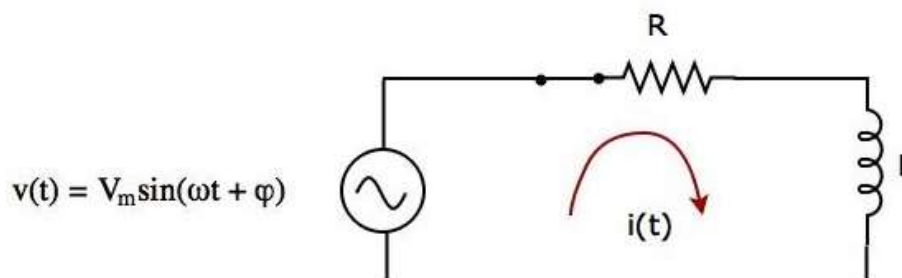
### Finding the Response of Series RL Circuit

Consider the following **series RL circuit** diagram.



In the above circuit, the **switch** was kept **open** up to  $t=0$  and it was closed at  $t=0$ . So, the AC voltage source having a peak voltage of  $V_m$  volts is not connected to the series RL circuit up to this instant. Therefore, there is **no initial current** flows through the inductor.

The circuit diagram, when the **switch** is in **closed** position, is shown in the following figure.



Now, the current  $i(t)$  flows in the entire circuit, since the AC voltage source having a peak voltage of  $V_m$  volts is connected to the series RL circuit.

We know that the current  $i(t)$  flowing through the above circuit will have two terms, one that represents the transient part and other term represents the steady state.

Mathematically, it can be represented as

$$i(t) = i_{Tr}(t) + i_{SS}(t) \quad \text{Equation 1}$$

Where,

- $i_{Tr}(t)$  is the transient response of the current flowing through the circuit.
- $i_{SS}(t)$  is the steady state response of the current flowing through the circuit.

In the previous chapter, we got the transient response of the current flowing through the series RL circuit. It is in the form of  $Ke^{-\left(\frac{t}{\tau}\right)}$ .

Substitute  $i_{Tr}(t) = Ke^{-\left(\frac{t}{\tau}\right)}$  in Equation 1.

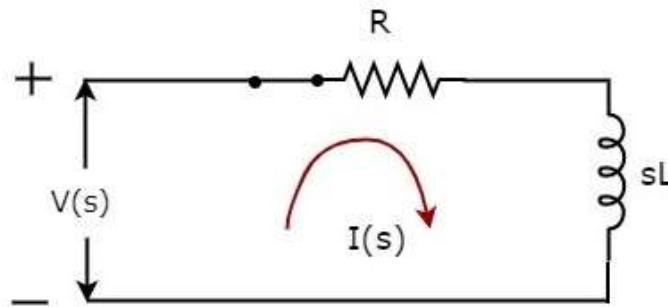
$$i(t) = Ke^{-\left(\frac{t}{\tau}\right)} + i_{SS}(t) \quad \text{Equation 2}$$

### Calculation of Steady State Current

If a sinusoidal signal is applied as an input to a Linear electric circuit, then it produces a steady state output, which is also a **sinusoidal signal**. Both the input and output sinusoidal signals will be having the same frequency, but different amplitudes and phase angles.

We can calculate the steady state response of an electric circuit, when it is excited by a sinusoidal voltage source using **Laplace Transform approach**.

The s-domain circuit diagram, when the **switch** is in **closed** position, is shown in the following figure.



In the above circuit, all the quantities and parameters are represented in **s-domain**. These are the Laplace transforms of time-domain quantities and parameters.

The **Transfer function** of the above circuit is

$$\begin{aligned} H(s) &= \frac{I(s)}{V(s)} \\ \Rightarrow H(s) &= \frac{1}{Z(s)} \\ \Rightarrow H(s) &= \frac{1}{R + sL} \end{aligned}$$

Substitute  $s = j\omega$  in the above equation.

$$H(j\omega) = \frac{1}{R + j\omega L}$$

**Magnitude of  $H(j\omega)$**  is

$$|H(j\omega)| = \frac{1}{\sqrt{R^2 + \omega^2 L^2}}$$

**Phase angle of  $H(j\omega)$**  is

$$\angle H(j\omega) = -\tan^{-1}\left(\frac{\omega L}{R}\right)$$

We will get the **steady state current**  $i_{ss}(t)$  by doing the following two steps:

- Multiply the peak voltage of input sinusoidal voltage and the magnitude of  $H(j\omega)$ .
- Add the phase angles of input sinusoidal voltage and  $H(j\omega)$ .

The **steady state current**  $i_{ss}(t)$  will be

$$i_{ss}(t) = \frac{V_m}{\sqrt{R^2 + \omega^2 L^2}} \sin\left(\omega t + \varphi - \tan^{-1}\left(\frac{\omega L}{R}\right)\right)$$

Substitute the value of  $i_{ss}(t)$  in Equation 2.

$$i(t) = K e^{-\left(\frac{t}{\tau}\right)} + \frac{V_m}{\sqrt{R^2 + \omega^2 L^2}} \sin\left(\omega t + \varphi - \tan^{-1}\left(\frac{\omega L}{R}\right)\right) \quad \text{Equation 3}$$

We know that there is no initial current in the circuit. Hence, substitute  $t = 0$  &  $i(t) = 0$  in Equation 3 in order to find the value of constant,  $K$ .

$$\begin{aligned} 0 &= K e^{-\left(\frac{0}{\tau}\right)} + \frac{V_m}{\sqrt{R^2 + \omega^2 L^2}} \sin\left(\omega(0) + \varphi - \tan^{-1}\left(\frac{\omega L}{R}\right)\right) \\ \Rightarrow 0 &= K + \frac{V_m}{\sqrt{R^2 + \omega^2 L^2}} \sin\left(\varphi - \tan^{-1}\left(\frac{\omega L}{R}\right)\right) \\ \Rightarrow K &= -\frac{V_m}{\sqrt{R^2 + \omega^2 L^2}} \sin\left(\varphi - \tan^{-1}\left(\frac{\omega L}{R}\right)\right) \end{aligned}$$

Substitute the value of  $K$  in Equation 3.

$$i(t) = -\frac{V_m}{\sqrt{R^2 + \omega^2 L^2}} \sin\left(\varphi - \tan^{-1}\left(\frac{\omega L}{R}\right)\right) e^{-\left(\frac{t}{\tau}\right)} + \frac{V_m}{\sqrt{R^2 + \omega^2 L^2}} \sin\left(\omega t + \varphi - \tan^{-1}\left(\frac{\omega L}{R}\right)\right)$$

**Equation 4**

Equation 4 represents the current flowing through the series RL circuit, when it is excited by a sinusoidal voltage source. It is having two terms. The first and second terms represent the transient response and steady state response of the current respectively.

We can **neglect the first term** of Equation 4 because its value will be very much less than one. So, the resultant current flowing through the circuit will be

$$i(t) = \frac{V_m}{\sqrt{R^2 + \omega^2 L^2}} \sin\left(\omega t + \varphi - \tan^{-1}\left(\frac{\omega L}{R}\right)\right)$$

It contains only the **steady state term**. Hence, we can find only the steady state response of AC circuits and neglect transient response of it.

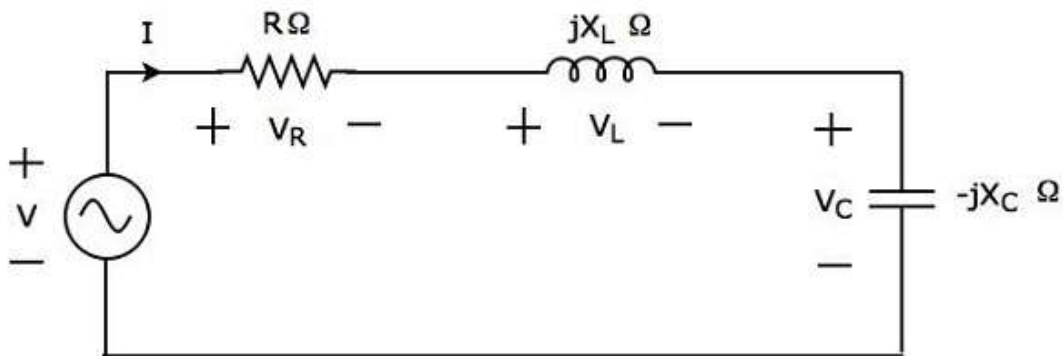
# 21. Network Theory – Series Resonance

**Resonance** occurs in electric circuits due to the presence of energy storing elements like inductor and capacitor. It is the fundamental concept based on which, the radio and TV receivers are designed in such a way that they should be able to select only the desired station frequency.

There are **two types** of resonances, namely series resonance and parallel resonance. These are classified based on the network elements that are connected in series or parallel. In this chapter, let us discuss about series resonance.

## Series Resonance Circuit Diagram

If the resonance occurs in series RLC circuit, then it is called as **Series Resonance**. Consider the following **series RLC circuit**, which is represented in phasor domain.



Here, the passive elements such as resistor, inductor and capacitor are connected in series. This entire combination is in **series** with the input sinusoidal voltage source.

Apply **KVL** around the loop.

$$\begin{aligned} V - V_R - V_L - V_C &= 0 \\ \Rightarrow V - IR - I(jX_L) - I(-jX_C) &= 0 \\ \Rightarrow V &= IR + I(jX_L) + I(-jX_C) \\ \Rightarrow V &= I[R + j(X_L - X_C)] \end{aligned}$$

**Equation 1**

The above equation is in the form of  $V = IZ$ .

Therefore, the **impedance Z** of series RLC circuit will be

$$Z = R + j(X_L - X_C)$$

## Parameters & Electrical Quantities at Resonance

---

Now, let us derive the values of parameters and electrical quantities at resonance of series RLC circuit one by one.

### Resonant Frequency

The frequency at which resonance occurs is called as **resonant frequency**  $f_r$ . In series RLC circuit resonance occurs, when the imaginary term of impedance  $Z$  is zero, i.e., the value of  $X_L - X_C$  should be equal to zero.

$$\Rightarrow X_L = X_C$$

- Substitute  $X_L = 2\pi fL$  and  $X_C = \frac{1}{2\pi fC}$  in the above equation.

$$2\pi fL = \frac{1}{2\pi fC}$$

$$\Rightarrow f^2 = \frac{1}{(2\pi)^2 LC}$$

$$\Rightarrow f = \frac{1}{2\pi\sqrt{LC}}$$

Therefore, the **resonant frequency**  $f_r$  of series RLC circuit is

$$f_r = \frac{1}{2\pi\sqrt{LC}}$$

Where,  $L$  is the inductance of an inductor and  $C$  is the capacitance of a capacitor.

The **resonant frequency**  $f_r$  of series RLC circuit depends only on the inductance  $L$  and capacitance  $C$ . But, it is independent of resistance  $R$ .

### Impedance

We got the **impedance**  $Z$  of series RLC circuit as

$$Z = R + j(X_L - X_C)$$

Substitute  $X_L = X_C$  in the above equation.

$$Z = R + j(X_C - X_C)$$

$$\Rightarrow Z = R + j(0)$$

$$\Rightarrow Z = R$$

At resonance, the **impedance**  $Z$  of series RLC circuit is equal to the value of resistance  $R$ , i.e.,  $Z = R$ .

## Current flowing through the Circuit

Substitute  $X_L - X_C = 0$  in Equation 1.

$$V = I[R + j(0)]$$

$$\Rightarrow V = IR$$

$$\Rightarrow I = \frac{V}{R}$$

Therefore, **current** flowing through series RLC circuit at resonance is  $I = \frac{V}{R}$ .

At resonance, the impedance of series RLC circuit reaches to minimum value. Hence, the **maximum current** flows through this circuit at resonance.

## Voltage across Resistor

The voltage across resistor is

$$V_R = IR$$

Substitute the value of  $I$  in the above equation.

$$V_R = \left(\frac{V}{R}\right)R$$

$$\Rightarrow V_R = V$$

Therefore, the **voltage across resistor** at resonance is  $V_R = V$ .

## Voltage across Inductor

The voltage across inductor is

$$V_L = I(jX_L)$$

Substitute the value of  $I$  in the above equation.

$$V_L = \left(\frac{V}{R}\right)(jX_L)$$

$$\Rightarrow V_L = j\left(\frac{X_L}{R}\right)V$$

$$\Rightarrow V_L = jQV$$

Therefore, the **voltage across inductor** at resonance is  $V_L = jQV$ .

So, the **magnitude** of voltage across inductor at resonance will be

$$|V_L| = QV$$

Where  $Q$  is the **Quality factor** and its value is equal to  $\frac{X_L}{R}$ .

## Voltage across Capacitor

The voltage across capacitor is

$$V_c = I(-jX_c)$$

Substitute the value of  $I$  in the above equation.

$$\begin{aligned} V_c &= \left(\frac{V}{R}\right)(-jX_c) \\ \Rightarrow V_c &= -j\left(\frac{X_c}{R}\right)V \\ \Rightarrow V_c &= -jQV \end{aligned}$$

Therefore, the **voltage across capacitor** at resonance is  $V_c = -jQV$ .

So, the **magnitude** of voltage across capacitor at resonance will be

$$|V_c| = QV$$

Where **Q** is the **Quality factor** and its value is equal to  $\frac{X_c}{R}$ .

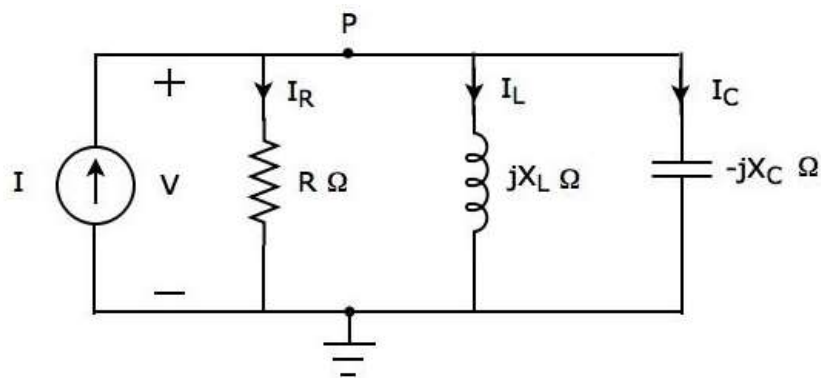
**Note:** Series resonance RLC circuit is called as **voltage magnification** circuit, because the magnitude of voltage across the inductor and the capacitor is equal to  $Q$  times the input sinusoidal voltage  $V$ .

## 22. Network Theory – Parallel Resonance

In the previous chapter, we discussed the importance of series resonance. Now, let us discuss parallel resonance in RLC circuits.

### Parallel Resonance Circuit Diagram

If the resonance occurs in parallel RLC circuit, then it is called as **Parallel Resonance**. Consider the following **parallel RLC circuit**, which is represented in phasor domain.



Here, the passive elements such as resistor, inductor and capacitor are connected in parallel. This entire combination is in **parallel** with the input sinusoidal current source.

Write **nodal equation** at node P.

$$\begin{aligned} -I + I_R + I_L + I_C &= 0 \\ \Rightarrow -I + \frac{V}{R} + \frac{V}{jX_L} + \frac{V}{-jX_C} &= 0 \\ \Rightarrow I &= \frac{V}{R} - \frac{jV}{X_L} + \frac{jV}{X_C} \\ \Rightarrow I &= V \left[ \frac{1}{R} + j \left( \frac{1}{X_C} - \frac{1}{X_L} \right) \right] \end{aligned}$$

**Equation 1**

The above equation is in the form of  $I = VY$ .

Therefore, the **admittance Y** of parallel RLC circuit will be

$$Y = \frac{1}{R} + j \left( \frac{1}{X_C} - \frac{1}{X_L} \right)$$



## Parameters & Electrical Quantities at Resonance

---

Now, let us derive the values of parameters and electrical quantities at resonance of parallel RLC circuit one by one.

### Resonant Frequency

We know that the **resonant frequency**,  $f_r$  is the frequency at which, resonance occurs. In parallel RLC circuit resonance occurs, when the imaginary term of admittance,  $Y$  is zero. i.e., the value of  $\frac{1}{X_C} - \frac{1}{X_L}$  should be equal to zero.

$$\Rightarrow \frac{1}{X_C} = \frac{1}{X_L}$$

$$\Rightarrow X_L = X_C$$

The above resonance condition is same as that of series RLC circuit. So, the **resonant frequency**  $f_r$  will be same in both series RLC circuit and parallel RLC circuit.

Therefore, the **resonant frequency**,  $f_r$  of parallel RLC circuit is

$$f_r = \frac{1}{2\pi\sqrt{LC}}$$

Where,

- L is the inductance of an inductor.
- C is the capacitance of a capacitor.

The **resonant frequency**  $f_r$  of parallel RLC circuit depends only on the inductance **L** and capacitance **C**. But, it is independent of resistance **R**.

### Admittance

We got the **admittance**  $Y$  of parallel RLC circuit as

$$Y = \frac{1}{R} + j\left(\frac{1}{X_C} - \frac{1}{X_L}\right)$$

Substitute,  $X_L = X_C$  in the above equation.

$$Y = \frac{1}{R} + j\left(\frac{1}{X_C} - \frac{1}{X_C}\right)$$

$$\Rightarrow Y = \frac{1}{R} + j(0)$$

$$\Rightarrow Y = \frac{1}{R}$$

At resonance, the **admittance**,  $Y$  of parallel RLC circuit is equal to the reciprocal of the resistance,  $R$ . i.e.,  $Y = \frac{1}{R}$ .

### Voltage across each Element

Substitute,  $\frac{1}{X_C} - \frac{1}{X_L} = 0$  in Equation 1.

$$I = V \left[ \frac{1}{R} + j(0) \right]$$

$$\Rightarrow I = \frac{V}{R}$$

$$\Rightarrow V = IR$$

Therefore, the **voltage** across all the elements of parallel RLC circuit at resonance is  $V = IR$ .

At resonance, the admittance of parallel RLC circuit reaches to minimum value. Hence, **maximum voltage** is present across each element of this circuit at resonance.

### Current flowing through Resistor

The current flowing through resistor is

$$I_R = \frac{V}{R}$$

Substitute the value of  $V$  in the above equation.

$$I_R = \frac{IR}{R}$$

$$\Rightarrow I_R = I$$

Therefore, the **current flowing through resistor** at resonance is  $I_R = I$ .

### Current flowing through Inductor

The current flowing through inductor is

$$I_L = \frac{V}{jX_L}$$

Substitute the value of  $V$  in the above equation.

$$I_L = \frac{IR}{jX_L}$$

$$\Rightarrow I_L = -j \left( \frac{R}{X_L} \right) I$$

$$\Rightarrow I_L = -jQI$$

Therefore, the **current flowing through inductor** at resonance is  $I_L = -jQI$ .

So, the **magnitude** of current flowing through inductor at resonance will be

$$|I_L| = QI$$

Where, Q is the **Quality factor** and its value is equal to  $\frac{R}{X_L}$ .

## Current flowing through Capacitor

The current flowing through capacitor is

$$I_c = \frac{V}{-jX_c}$$

Substitute the value of  $V$  in the above equation.

$$I_c = \frac{IR}{-jX_c}$$

$$\Rightarrow I_c = j\left(\frac{R}{X_c}\right)I$$

$$\Rightarrow I_c = jQI$$

Therefore, the **current flowing through capacitor** at resonance is  $I_c = jQI$ .

So, the **magnitude** of current flowing through capacitor at resonance will be

$$|I_c| = QI$$

Where,  $Q$  is the **Quality factor** and its value is equal to  $\frac{R}{X_c}$ .

**Note:** Parallel resonance RLC circuit is called as **current magnification** circuit. Because, the magnitude of current flowing through inductor and capacitor is equal to  $Q$  times the input sinusoidal current  $I$ .

# 23. Network Theory – Coupled Circuits

An electric circuit is said to be a **coupled circuit**, when there exists a mutual inductance between the coils (or inductors) present in that circuit. Coil is nothing but the series combination of resistor and inductor. In the absence of resistor, coil becomes inductor. Sometimes, the terms coil and inductor are interchangeably used.

In this chapter, first let us discuss about the dot convention and then will discuss about classification of coupling.

## Dot Convention

Dot convention is a technique, which gives the details about voltage polarity at the dotted terminal. This information is useful, while writing KVL equations.

- If the current enters at the dotted terminal of one coil (or inductor), then it induces a voltage at another coil (or inductor), which is having **positive polarity** at the dotted terminal.
- If the current leaves from the dotted terminal of one coil (or inductor), then it induces a voltage at another coil (or inductor), which is having **negative polarity** at the dotted terminal.

## Classification of Coupling

---

We can classify **coupling** into the following two categories.

- Electrical Coupling
- Magnetic Coupling

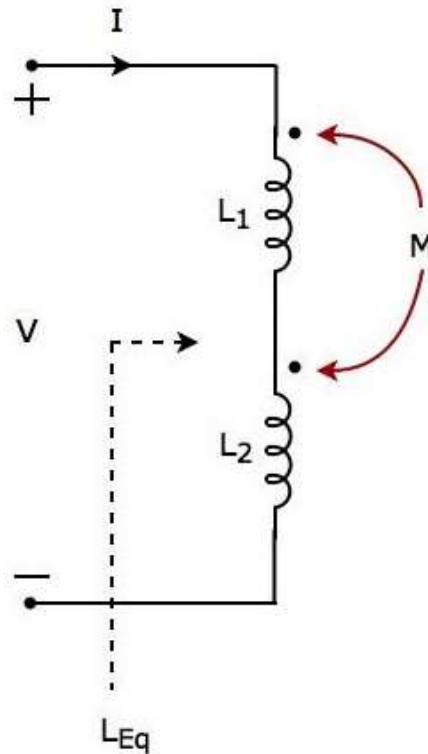
Now, let us discuss about each type of coupling one by one.

### Electrical Coupling

Electrical coupling occurs, when there exists a **physical connection** between two coils (or inductors). This coupling can be of either aiding type or opposing type. It is based on whether the current enters at the dotted terminal or leaves from the dotted terminal.

## Coupling of Aiding type

Consider the following electric circuit, which is having two inductors that are connected in **series**.



Since the two inductors are connected in series, the **same current  $I$**  flow through both inductors having self-inductances  $L_1$  and  $L_2$ .

In this case, the current,  $I$  enter at the dotted terminal of each inductor. Hence, the induced voltage in each inductor will be having **positive polarity** at the dotted terminal due to the current flowing in another coil.

Apply **KVL** around the loop of the above electric circuit or network.

$$\begin{aligned}
 V - L_1 \frac{dI}{dt} - M \frac{dI}{dt} - L_2 \frac{dI}{dt} - M \frac{dI}{dt} &= 0 \\
 \Rightarrow V &= L_1 \frac{dI}{dt} + L_2 \frac{dI}{dt} + 2M \frac{dI}{dt} \\
 \Rightarrow V &= (L_1 + L_2 + 2M) \frac{dI}{dt}
 \end{aligned}$$

The above equation is in the form of  $V = L_{Eq} \frac{dI}{dt}$ .

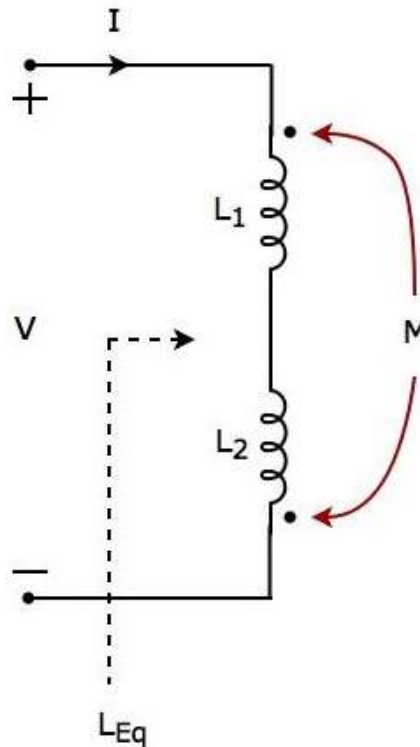
Therefore, the **equivalent inductance** of series combination of inductors shown in the above figure is

$$L_{Eq} = L_1 + L_2 + 2M$$

In this case, the equivalent inductance has been increased by  $2M$ . Hence, the above electrical circuit is an example of **electrical** coupling which is of **aiding** type.

## Coupling of Opposing type

Consider the following electric circuit, which is having two inductors that are connected in **series**.



In the above circuit, the current **I** enters at the dotted terminal of the inductor having an inductance of **L<sub>1</sub>**. Hence, it induces a voltage in the other inductor having an inductance of **L<sub>2</sub>**. So, **positive polarity** of the induced voltage is present at the dotted terminal of this inductor.

In the above circuit, the current **I** leaves from the dotted terminal of the inductor having an inductance of **L<sub>2</sub>**. Hence, it induces a voltage in the other inductor having an inductance of **L<sub>1</sub>**. So, **negative polarity** of the induced voltage is present at the dotted terminal of this inductor.

Apply **KVL** around the loop of the above electric circuit or network.

$$\begin{aligned}
 V - L_1 \frac{dI}{dt} + M \frac{dI}{dt} - L_2 \frac{dI}{dt} + M \frac{dI}{dt} &= 0 \\
 \Rightarrow V &= L_1 \frac{dI}{dt} + L_2 \frac{dI}{dt} - 2M \frac{dI}{dt} \\
 \Rightarrow V &= (L_1 + L_2 - 2M) \frac{dI}{dt}
 \end{aligned}$$

The above equation is in the form of  $V = L_{Eq} \frac{dI}{dt}$ .

Therefore, the **equivalent inductance** of series combination of inductors shown in the above figure is

$$L_{Eq} = L_1 + L_2 - 2M$$

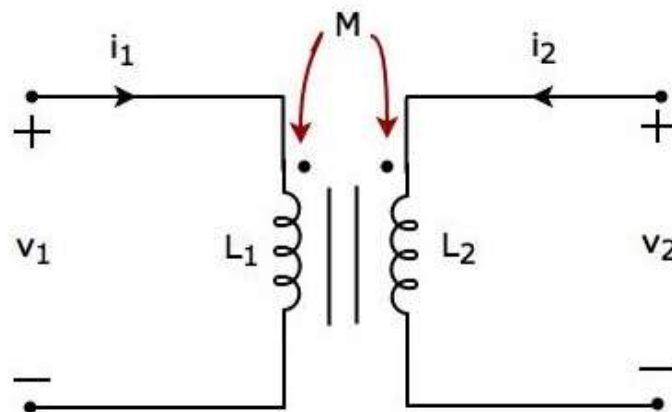
In this case, the equivalent inductance has been decreased by  $2M$ . Hence, the above electrical circuit is an example of **electrical** coupling which is of **opposing** type.

## Magnetic Coupling

Magnetic coupling occurs, when there is **no physical connection** between two coils (or inductors). This coupling can be of either aiding type or opposing type. It is based on whether the current enters at the dotted terminal or leaves from the dotted terminal.

### Coupling of Aiding type

Consider the following electrical equivalent **circuit of transformer**. It is having two coils and these are called as primary and secondary coils.



The currents flowing through primary and secondary coils are  $i_1$  and  $i_2$  respectively. In this case, these currents **enter** at the dotted terminal of respective coil. Hence, the induced voltage in each coil will be having positive polarity at the dotted terminal due to the current flowing in another coil.

Apply **KVL** around primary coil.

$$v_1 - L_1 \frac{di_1}{dt} - M \frac{di_2}{dt} = 0$$

$$\Rightarrow v_1 = L_1 \frac{di_1}{dt} + M \frac{di_2}{dt}$$

**Equation 1**

Apply **KVL** around secondary coil.

$$v_2 - L_2 \frac{di_2}{dt} - M \frac{di_1}{dt} = 0$$

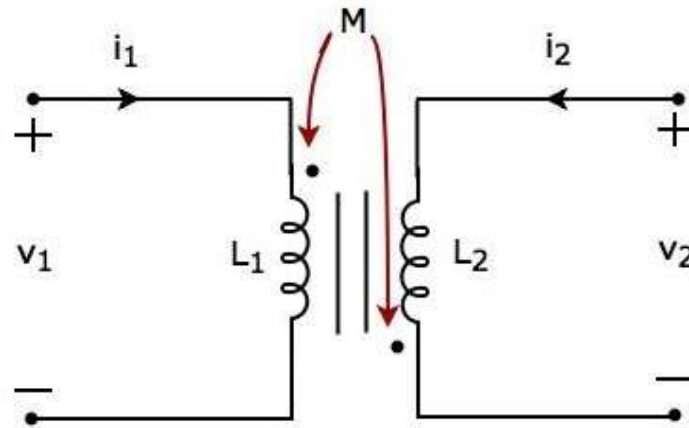
$$\Rightarrow v_2 = L_2 \frac{di_2}{dt} + M \frac{di_1}{dt}$$

**Equation 2**

In Equation 1 and Equation 2, the self-induced voltage and mutually induced voltage have the same polarity. Hence, the above transformer circuit is an example of **magnetic coupling**, which is of **aiding** type.

## Coupling of Opposing Type

Consider the following electrical equivalent **circuit of transformer**.



The currents flowing through primary and secondary coils are  $i_1$  and  $i_2$  respectively. In this case, the current,  $i_1$  enters at the dotted terminal of primary coil. Hence, it induces a voltage in secondary coil. So, **positive polarity** of the induced voltage is present at the dotted terminal of this secondary coil.

In the above circuit, the current,  $i_2$  leaves from the dotted terminal of secondary coil. Hence, it induces a voltage in primary coil. So, **negative polarity** of the induced voltage is present at the dotted terminal of this primary coil.

Apply **KVL** around primary coil.

$$v_1 - L_1 \frac{di_1}{dt} + M \frac{di_2}{dt} = 0$$

$$\Rightarrow v_1 = L_1 \frac{di_1}{dt} - M \frac{di_2}{dt} \quad \text{Equation 3}$$

Apply **KVL** around secondary coil.

$$v_2 - L_2 \frac{di_2}{dt} + M \frac{di_1}{dt} = 0$$

$$\Rightarrow v_2 = L_2 \frac{di_2}{dt} - M \frac{di_1}{dt} \quad \text{Equation 4}$$

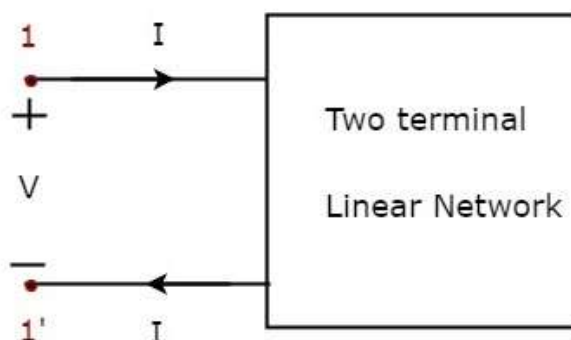
In Equation 3 and Equation 4, self-induced voltage and mutually induced voltage are having opposite polarity. Hence, the above transformer circuit is an example of **magnetic coupling**, which is of **opposing** type.



## 24. Network Theory – Two-Port Networks

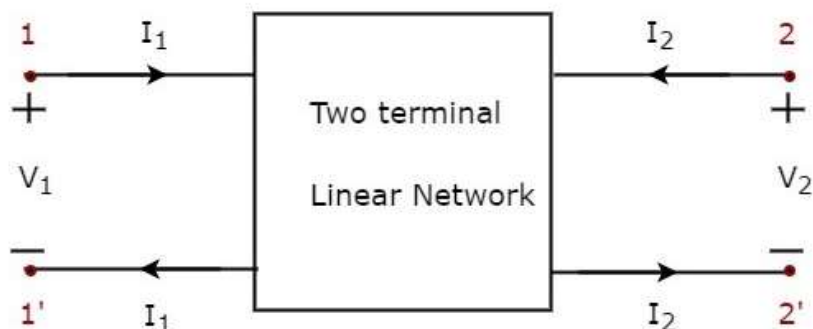
In general, it is easy to analyze any electrical network, if it is represented with an equivalent model, which gives the relation between input and output variables. For this, we can use **two port network** representations. As the name suggests, two port networks contain two ports. Among which, one port is used as an input port and the other port is used as an output port. The first and second ports are called as port1 and port2 respectively.

**One port network** is a two terminal electrical network in which, current enters through one terminal and leaves through another terminal. Resistors, inductors and capacitors are the examples of one port network because each one has two terminals. One port network representation is shown in the following figure.



Here, the pair of terminals, 1 & 1' represents a port. In this case, we are having only one port since it is a one port network.

Similarly, **two port network** is a pair of two terminal electrical network in which, current enters through one terminal and leaves through another terminal of each port. Two port network representation is shown in the following figure.



Here, one pair of terminals, 1 & 1' represents one port, which is called as **port1** and the other pair of terminals, 2 & 2' represents another port, which is called as **port2**.

There are **four variables**  $V_1$ ,  $V_2$ ,  $I_1$  and  $I_2$  in a two port network as shown in the figure. Out of which, we can choose two variables as independent and another two variables as dependent. So, we will get six possible pairs of equations. These equations represent the dependent variables in terms of independent variables. The coefficients of independent variables are called as **parameters**. So, each pair of equations will give a set of four parameters.

## Two Port Network Parameters

---

The parameters of a two port network are called as **two port network parameters** or simply, two port parameters. Following are the types of two port network parameters.

- Z parameters
- Y parameters
- T parameters
- T' parameters
- h-parameters
- g-parameters

Now, let us discuss about these two port network parameters one by one.

### Z parameters

We will get the following set of two equations by considering the variables  $V_1$  &  $V_2$  as dependent and  $I_1$  &  $I_2$  as independent. The coefficients of independent variables,  $I_1$  and  $I_2$  are called as **Z parameters**.

$$V_1 = Z_{11}I_1 + Z_{12}I_2$$

$$V_2 = Z_{21}I_1 + Z_{22}I_2$$

The **Z parameters** are

$$Z_{11} = \frac{V_1}{I_1}, \quad \text{when } I_2 = 0$$

$$Z_{12} = \frac{V_1}{I_2}, \quad \text{when } I_1 = 0$$

$$Z_{21} = \frac{V_2}{I_1}, \quad \text{when } I_2 = 0$$

$$Z_{22} = \frac{V_2}{I_2}, \quad \text{when } I_1 = 0$$

Z parameters are called as **impedance parameters** because these are simply the ratios of voltages and currents. Units of Z parameters are Ohm ( $\Omega$ ).

We can calculate two Z parameters,  $Z_{11}$  and  $Z_{21}$ , by doing open circuit of port2. Similarly, we can calculate the other two Z parameters,  $Z_{12}$  and  $Z_{22}$  by doing open circuit of port1. Hence, the Z parameters are also called as **open-circuit impedance parameters**.

## Y parameters

We will get the following set of two equations by considering the variables  $I_1$  &  $I_2$  as dependent and  $V_1$  &  $V_2$  as independent. The coefficients of independent variables,  $V_1$  and  $V_2$  are called as **Y parameters**.

$$I_1 = Y_{11}V_1 + Y_{12}V_2$$

$$I_2 = Y_{21}V_1 + Y_{22}V_2$$

The **Y parameters** are

$$Y_{11} = \frac{I_1}{V_1}, \quad \text{when } V_2 = 0$$

$$Y_{12} = \frac{I_1}{V_2}, \quad \text{when } V_1 = 0$$

$$Y_{21} = \frac{I_2}{V_1}, \quad \text{when } V_2 = 0$$

$$Y_{22} = \frac{I_2}{V_2}, \quad \text{when } V_1 = 0$$

Y parameters are called as **admittance parameters** because these are simply, the ratios of currents and voltages. Units of Y parameters are mho.

We can calculate two Y parameters,  $Y_{11}$  and  $Y_{21}$  by doing short circuit of port2. Similarly, we can calculate the other two Y parameters,  $Y_{12}$  and  $Y_{22}$  by doing short circuit of port1. Hence, the Y parameters are also called as **short-circuit admittance parameters**.

## T parameters

We will get the following set of two equations by considering the variables  $V_1$  &  $I_1$  as dependent and  $V_2$  &  $I_2$  as independent. The coefficients of  $V_2$  and  $-I_2$  are called as **T parameters**.

$$V_1 = AV_2 - BI_2$$

$$I_1 = CV_2 - DI_2$$

The **T parameters** are

$$A = \frac{V_1}{V_2}, \quad \text{when } I_2 = 0$$

$$B = -\frac{V_1}{I_2}, \quad \text{when } V_2 = 0$$

$$C = \frac{I_1}{V_2}, \quad \text{when } I_2 = 0$$

$$D = -\frac{I_1}{I_2}, \quad \text{when } V_2 = 0$$

T parameters are called as transmission parameters or **ABCD parameters**. The parameters, A and D do not have any units, since those are dimension less. The units of parameters, B and C are ohm and mho respectively.

We can calculate two parameters, A and C by doing open circuit of port2. Similarly, we can calculate the other two parameters, B and D by doing short circuit of port2.

### T' parameters

We will get the following set of two equations by considering the variables  $V_2$  &  $I_2$  as dependent and  $V_1$  &  $I_1$  as independent. The coefficients of  $V_1$  and  $-I_1$  are called as **T' parameters**.

$$V_2 = A'V_1 - B'I_1$$

$$I_2 = C'V_1 - D'I_1$$

The **T' parameters** are

$$A' = \frac{V_2}{V_1}, \text{ when } I_1 = 0$$

$$B' = -\frac{V_2}{I_1}, \text{ when } V_1 = 0$$

$$C' = \frac{I_2}{V_1}, \text{ when } I_1 = 0$$

$$D' = -\frac{I_2}{I_1}, \text{ when } V_1 = 0$$

T' parameters are called as inverse transmission parameters or **A'B'C'D' parameters**. The parameters A' and D' do not have any units, since those are dimension less. The units of parameters, B' and C', are Ohm and Mho respectively.

We can calculate two parameters, A' and C', by doing an open circuit of port1. Similarly, we can calculate the other two parameters, B' and D', by doing a short circuit of port1.

### h-parameters

We will get the following set of two equations by considering the variables  $V_1$  &  $I_2$  as dependent and  $I_1$  &  $V_2$  as independent. The coefficients of independent variables,  $I_1$  and  $V_2$ , are called as **h-parameters**.

$$V_1 = h_{11}I_1 + h_{12}V_2$$

$$I_2 = h_{21}I_1 + h_{22}V_2$$

The **h-parameters** are

$$h_{11} = \frac{V_1}{I_1}, \text{ when } V_2 = 0$$

$$h_{12} = \frac{V_1}{V_2}, \text{ when } I_1 = 0$$

$$h_{21} = \frac{I_2}{I_1}, \text{ when } V_2 = 0$$

$$h_{22} = \frac{I_2}{V_2}, \text{ when } I_1 = 0$$

h-parameters are called as **hybrid parameters**. The parameters,  $h_{12}$  and  $h_{21}$ , do not have any units, since those are dimension-less. The units of parameters,  $h_{11}$  and  $h_{22}$ , are Ohm and Mho respectively.

We can calculate two parameters,  $h_{11}$  and  $h_{21}$  by doing short circuit of port2. Similarly, we can calculate the other two parameters,  $h_{12}$  and  $h_{22}$  by doing open circuit of port1.

The h-parameters or hybrid parameters are useful in transistor modelling circuits (networks).

### g-parameters

We will get the following set of two equations by considering the variables  $I_1$  &  $V_2$  as dependent and  $V_1$  &  $I_2$  as independent. The coefficients of independent variables,  $V_1$  and  $I_2$  are called as **g-parameters**.

$$I_1 = g_{11}V_1 + g_{12}I_2$$

$$V_2 = g_{21}V_1 + g_{22}I_2$$

The **g-parameters** are

$$g_{11} = \frac{I_1}{V_1}, \text{ when } I_2 = 0$$

$$g_{12} = \frac{I_1}{I_2}, \text{ when } V_1 = 0$$

$$g_{21} = \frac{V_2}{V_1}, \text{ when } I_2 = 0$$

$$g_{22} = \frac{V_2}{I_2}, \text{ when } V_1 = 0$$

g-parameters are called as **inverse hybrid parameters**. The parameters,  $g_{12}$  and  $g_{21}$  do not have any units, since those are dimension less. The units of parameters,  $g_{11}$  and  $g_{22}$  are mho and ohm respectively.

We can calculate two parameters,  $g_{11}$  and  $g_{21}$  by doing open circuit of port2. Similarly, we can calculate the other two parameters,  $g_{12}$  and  $g_{22}$  by doing short circuit of port1.

# 25. Network Theory – Two-Port Parameter Conversions

In the previous chapter, we discussed about six types of two-port network parameters. Now, let us convert one set of two-port network parameters into other set of two port network parameters. This conversion is known as two port network parameters conversion or simply, **two-port parameters conversion**.

Sometimes, it is easy to find one set of parameters of a given electrical network easily. In those situations, we can convert these parameters into the required set of parameters instead of calculating these parameters directly with more difficulty.

Now, let us discuss about some of the two port parameter conversions.

## Procedure of two port parameter conversions

---

Follow these steps, while converting one set of two port network parameters into the other set of two port network parameters.

- **Step 1:** Write the equations of a two port network in terms of desired parameters.
- **Step 2:** Write the equations of a two port network in terms of given parameters.
- **Step 3:** Re-arrange the equations of Step2 in such a way that they should be similar to the equations of Step1.
- **Step 4:** By equating the similar equations of Step1 and Step3, we will get the desired parameters in terms of given parameters. We can represent these parameters in matrix form.

### Z parameters to Y parameters

Here, we have to represent Y parameters in terms of Z parameters. So, in this case Y parameters are the desired parameters and Z parameters are the given parameters.

**Step 1:** We know that the following set of two equations, which represents a two port network in terms of **Y parameters**.

$$I_1 = Y_{11}V_1 + Y_{12}V_2$$

$$I_2 = Y_{21}V_1 + Y_{22}V_2$$

We can represent the above two equations in **matrix** form as

$$\begin{bmatrix} I_1 \\ I_2 \end{bmatrix} = \begin{bmatrix} Y_{11} & Y_{12} \\ Y_{21} & Y_{22} \end{bmatrix} \begin{bmatrix} V_1 \\ V_2 \end{bmatrix} \quad \text{Equation 1}$$

**Step 2:** We know that the following set of two equations, which represents a two port network in terms of **Z parameters**.

$$V_1 = Z_{11}I_1 + Z_{12}I_2$$

$$V_2 = Z_{21}I_1 + Z_{22}I_2$$

We can represent the above two equations in **matrix** form as

$$\begin{bmatrix} V_1 \\ V_2 \end{bmatrix} = \begin{bmatrix} Z_{11} & Z_{12} \\ Z_{21} & Z_{22} \end{bmatrix} \begin{bmatrix} I_1 \\ I_2 \end{bmatrix}$$

**Step 3:** We can modify it as

$$\begin{bmatrix} I_1 \\ I_2 \end{bmatrix} = \begin{bmatrix} Z_{11} & Z_{12} \\ Z_{21} & Z_{22} \end{bmatrix}^{-1} \begin{bmatrix} V_1 \\ V_2 \end{bmatrix} \quad \text{Equation 2}$$

**Step 4:** By equating Equation 1 and Equation 2, we will get

$$\begin{bmatrix} Y_{11} & Y_{12} \\ Y_{21} & Y_{22} \end{bmatrix} = \begin{bmatrix} Z_{11} & Z_{12} \\ Z_{21} & Z_{22} \end{bmatrix}^{-1}$$

$$\Rightarrow \begin{bmatrix} Y_{11} & Y_{12} \\ Y_{21} & Y_{22} \end{bmatrix} = \frac{\begin{bmatrix} Z_{22} & -Z_{12} \\ -Z_{21} & Z_{11} \end{bmatrix}}{\Delta Z}$$

Where,

$$\Delta Z = Z_{11}Z_{22} - Z_{12}Z_{21}$$

So, just by doing the **inverse of Z parameters matrix**, we will get Y parameters matrix.

## Z parameters to T parameters

Here, we have to represent T parameters in terms of Z parameters. So, in this case T parameters are the desired parameters and Z parameters are the given parameters.

**Step 1:** We know that, the following set of two equations, which represents a two port network in terms of **T parameters**.

$$V_1 = AV_2 - BI_2$$

$$I_1 = CV_2 - DI_2$$

**Step 2:** We know that the following set of two equations, which represents a two port network in terms of **Z parameters**.

$$V_1 = Z_{11}I_1 + Z_{12}I_2$$

$$V_2 = Z_{21}I_1 + Z_{22}I_2$$

**Step 3:** We can modify the above equation as

$$\Rightarrow V_2 - Z_{22}I_2 = Z_{21}I_1$$

$$\Rightarrow I_1 = \left(\frac{1}{Z_{21}}\right)V_2 - \left(\frac{Z_{22}}{Z_{21}}\right)I_2$$

**Step 4:** The above equation is in the form of  $I_1 = CV_2 - DI_2$ . Here,

$$C = \frac{1}{Z_{21}}$$

$$D = \frac{Z_{22}}{Z_{21}}$$

**Step 5:** Substitute  $I_1$  value of Step 3 in  $V_1$  equation of Step 2.

$$V_1 = Z_{11} \left\{ \left( \frac{1}{Z_{21}} \right) V_2 - \left( \frac{Z_{22}}{Z_{21}} \right) I_2 \right\} + Z_{12} I_2$$

$$\Rightarrow V_1 = \left( \frac{Z_{11}}{Z_{21}} \right) V_2 - \left( \frac{Z_{11}Z_{22} - Z_{12}Z_{21}}{Z_{21}} \right) I_2$$

**Step 6:** The above equation is in the form of  $V_1 = AV_2 - BI_2$ . Here,

$$A = \frac{Z_{11}}{Z_{21}}$$

$$B = \frac{Z_{11}Z_{22} - Z_{12}Z_{21}}{Z_{21}}$$

**Step 7:** Therefore, the **T parameters matrix** is

$$\begin{bmatrix} A & B \\ C & D \end{bmatrix} = \begin{bmatrix} \frac{Z_{11}}{Z_{21}} & \frac{Z_{11}Z_{22} - Z_{12}Z_{21}}{Z_{21}} \\ 1 & \frac{Z_{22}}{Z_{21}} \end{bmatrix}$$

## Y parameters to Z parameters

Here, we have to represent Z parameters in terms of Y parameters. So, in this case Z parameters are the desired parameters and Y parameters are the given parameters.

**Step 1:** We know that, the following matrix equation of two port network regarding Z parameters as

$$\begin{bmatrix} V_1 \\ V_2 \end{bmatrix} = \begin{bmatrix} Z_{11} & Z_{12} \\ Z_{21} & Z_{22} \end{bmatrix} \begin{bmatrix} I_1 \\ I_2 \end{bmatrix} \quad \text{Equation 3}$$

**Step 2:** We know that, the following matrix equation of two port network regarding Y parameters as

$$\begin{bmatrix} I_1 \\ I_2 \end{bmatrix} = \begin{bmatrix} Y_{11} & Y_{12} \\ Y_{21} & Y_{22} \end{bmatrix} \begin{bmatrix} V_1 \\ V_2 \end{bmatrix}$$

**Step 3:** We can modify it as

$$\begin{bmatrix} V_1 \\ V_2 \end{bmatrix} = \begin{bmatrix} Y_{11} & Y_{12} \\ Y_{21} & Y_{22} \end{bmatrix}^{-1} \begin{bmatrix} I_1 \\ I_2 \end{bmatrix} \quad \text{Equation 4}$$

**Step 4:** By equating Equation 3 and Equation 4, we will get

$$\begin{bmatrix} Z_{11} & Z_{12} \\ Z_{21} & Z_{22} \end{bmatrix} = \begin{bmatrix} Y_{11} & Y_{12} \\ Y_{21} & Y_{22} \end{bmatrix}^{-1}$$

$$\Rightarrow \begin{bmatrix} Z_{11} & Z_{12} \\ Z_{21} & Z_{22} \end{bmatrix} = \frac{\begin{bmatrix} Y_{22} & -Y_{12} \\ -Y_{21} & Y_{11} \end{bmatrix}}{\Delta Y}$$

Where,

$$\Delta Y = Y_{11}Y_{22} - Y_{12}Y_{21}$$

So, just by doing the **inverse of Y parameters matrix**, we will get the Z parameters matrix.



## Y parameters to T parameters

Here, we have to represent T parameters in terms of Y parameters. So, in this case, T parameters are the desired parameters and Y parameters are the given parameters.

**Step 1:** We know that, the following set of two equations, which represents a two port network in terms of **T parameters**.

$$V_1 = AV_2 - BI_2$$

$$I_1 = CV_2 - DI_2$$

**Step 2:** We know that the following set of two equations of two port network regarding Y parameters.

$$I_1 = Y_{11}V_1 + Y_{12}V_2$$

$$I_2 = Y_{21}V_1 + Y_{22}V_2$$

**Step 3:** We can modify the above equation as

$$\Rightarrow I_2 - Y_{22}V_2 = Y_{21}V_1$$

$$\Rightarrow V_1 = \left(\frac{-Y_{22}}{Y_{21}}\right)V_2 - \left(\frac{-1}{Y_{21}}\right)I_2$$

**Step 4:** The above equation is in the form of  $V_1 = AV_2 - BI_2$ . Here,

$$A = \frac{-Y_{22}}{Y_{21}}$$

$$B = \frac{-1}{Y_{21}}$$

**Step 5:** Substitute  $V_1$  value of Step3 in  $I_1$  equation of Step2.

$$I_1 = Y_{11} \left\{ \left(\frac{-Y_{22}}{Y_{21}}\right)V_2 - \left(\frac{-1}{Y_{21}}\right)I_2 \right\} + Y_{12}V_2$$

$$I_1 = \left(\frac{Y_{12}Y_{21} - Y_{11}Y_{22}}{Y_{21}}\right)V_2 - \left(\frac{-Y_{11}}{Y_{21}}\right)I_2$$

**Step 6:** The above equation is in the form of  $I_1 = CV_2 - DI_2$ . Here,

$$C = \frac{Y_{12}Y_{21} - Y_{11}Y_{22}}{Y_{21}}$$

$$D = \frac{-Y_{11}}{Y_{21}}$$

**Step 7:** Therefore, the T parameters matrix is

$$\begin{bmatrix} A & B \\ C & D \end{bmatrix} = \begin{bmatrix} \frac{-Y_{22}}{Y_{21}} & \frac{-1}{Y_{21}} \\ \frac{Y_{12}Y_{21} - Y_{11}Y_{22}}{Y_{21}} & \frac{-Y_{11}}{Y_{21}} \end{bmatrix}$$

## T parameters to h-parameters

Here, we have to represent h-parameters in terms of T parameters. So, in this case h-parameters are the desired parameters and T parameters are the given parameters.

**Step 1:** We know that, the following **h-parameters** of a two port network.

$$h_{11} = \frac{V_1}{I_1}, \text{ when } V_2 = 0$$

$$h_{12} = \frac{V_1}{V_2}, \text{ when } I_1 = 0$$

$$h_{21} = \frac{I_2}{I_1}, \text{ when } V_2 = 0$$

$$h_{22} = \frac{I_2}{V_2}, \text{ when } I_1 = 0$$

**Step 2:** We know that the following set of two equations of two port network regarding **T parameters**.

$$V_1 = AV_2 - BI_2 \quad \text{Equation 5}$$

$$I_1 = CV_2 - DI_2 \quad \text{Equation 6}$$

**Step 3:** Substitute  $V_2 = 0$  in the above equations in order to find the two h-parameters,  $h_{11}$  and  $h_{21}$ .

$$\Rightarrow V_1 = -BI_2$$

$$\Rightarrow I_1 = -DI_2$$

Substitute,  $V_1$  and  $I_1$  values in h-parameter,  $h_{11}$ .

$$h_{11} = \frac{-BI_2}{-DI_2}$$

$$\Rightarrow h_{11} = \frac{B}{D}$$

Substitute  $I_1$  value in h-parameter  $h_{21}$ .

$$h_{21} = \frac{I_2}{-DI_2}$$

$$\Rightarrow h_{21} = -\frac{1}{D}$$

**Step 4:** Substitute  $I_1 = 0$  in the second equation of step 2 in order to find the h-parameter  $h_{22}$ .

$$0 = CV_2 - DI_2$$

$$\Rightarrow CV_2 = DI_2$$

$$\Rightarrow \frac{I_2}{V_2} = \frac{C}{D}$$

$$\Rightarrow h_{22} = \frac{C}{D}$$

**Step 5:** Substitute  $I_2 = \left(\frac{C}{D}\right)V_2$  in the first equation of step 2 in order to find the h-parameter,  $h_{12}$ .

$$\begin{aligned} V_1 &= AV_2 - B\left(\frac{C}{D}\right)V_2 \\ \Rightarrow V_1 &= \left(\frac{AD - BC}{D}\right)V_2 \\ \Rightarrow \frac{V_1}{V_2} &= \frac{AD - BC}{D} \\ \Rightarrow h_{12} &= \frac{AD - BC}{D} \end{aligned}$$

**Step 6:** Therefore, the h-parameters matrix is

$$\begin{bmatrix} h_{11} & h_{12} \\ h_{21} & h_{22} \end{bmatrix} = \begin{bmatrix} \frac{B}{D} & \frac{AD - BC}{D} \\ -\frac{1}{D} & \frac{C}{D} \end{bmatrix}$$

### h-parameters to Z parameters

Here, we have to represent Z parameters in terms of h-parameters. So, in this case Z parameters are the desired parameters and h-parameters are the given parameters.

**Step 1:** We know that, the following set of two equations of two port network regarding **Z parameters**.

$$\begin{aligned} V_1 &= Z_{11}I_1 + Z_{12}I_2 \\ V_2 &= Z_{21}I_1 + Z_{22}I_2 \end{aligned}$$

**Step 2:** We know that, the following set of two equations of two-port network regarding **h-parameters**.

$$\begin{aligned} V_1 &= h_{11}I_1 + h_{12}V_2 \\ I_2 &= h_{21}I_1 + h_{22}V_2 \end{aligned}$$

**Step 3:** We can modify the above equation as

$$\begin{aligned} \Rightarrow I_2 - h_{21}I_1 &= h_{22}V_2 \\ \Rightarrow V_2 &= \frac{I_2 - h_{21}I_1}{h_{22}} \\ \Rightarrow V_2 &= \left(\frac{-h_{21}}{h_{22}}\right)I_1 + \left(\frac{1}{h_{22}}\right)I_2 \end{aligned}$$

The above equation is in the form of  $V_2 = Z_{21}I_1 + Z_{22}I_2$ . Here,

$$\begin{aligned} Z_{21} &= \frac{-h_{21}}{h_{22}} \\ Z_{22} &= \frac{1}{h_{22}} \end{aligned}$$

**Step 4:** Substitute  $V_2$  value in first equation of step 2.

$$V_1 = h_{11}I_1 + h_{12} \left\{ \left( \frac{-h_{21}}{h_{22}} \right) I_1 + \left( \frac{1}{h_{22}} \right) I_2 \right\}$$

$$\Rightarrow V_1 = \left( \frac{h_{11}h_{22} - h_{12}h_{21}}{h_{22}} \right) I_1 + \left( \frac{h_{12}}{h_{22}} \right) I_2$$

The above equation is in the form of  $V_1 = Z_{11}I_1 + Z_{12}I_2$ . Here,

$$Z_{11} = \frac{h_{11}h_{22} - h_{12}h_{21}}{h_{22}}$$

$$Z_{12} = \frac{h_{12}}{h_{22}}$$

**Step 5:** Therefore, the Z parameters matrix is

$$\begin{bmatrix} Z_{11} & Z_{12} \\ Z_{21} & Z_{22} \end{bmatrix} = \begin{bmatrix} \frac{h_{11}h_{22} - h_{12}h_{21}}{h_{22}} & \frac{h_{12}}{h_{22}} \\ -\frac{h_{21}}{h_{22}} & \frac{1}{h_{22}} \end{bmatrix}$$

In this way, we can convert one set of parameters into other set of parameters.

# 26. Network Theory – Filters

Filters as the name suggests, they filter the frequency components. That means, they allow certain frequency components and / or reject some other frequency components.

In this chapter, let us discuss about the **passive filters**. Those are the electric circuits or networks having passive elements like resistor, inductor and capacitor.

## Types of Filters

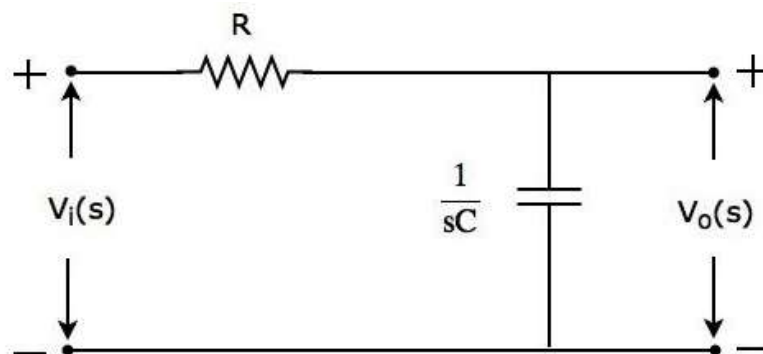
Filters are mainly classified into **four types** based on the band of frequencies that are allowing and / or the band of frequencies that are rejecting. Following are the types of filters.

- Low Pass Filter
- High Pass Filter
- Band Pass Filter
- Band Stop Filter

### Low Pass Filter

Low pass filter as the name suggests, it allows (passes) only **low frequency** components. That means, it rejects (blocks) all other high frequency components.

The s-domain **circuit diagram** (network) of Low Pass Filter is shown in the following figure.



It consists of two passive elements resistor and capacitor, which are connected in **series**. Input voltage is applied across this entire combination and the output is considered as the voltage across capacitor.

Here,  $V_i(s)$  and  $V_o(s)$  are the Laplace transforms of input voltage,  $v_i(t)$  and output voltage,  $v_o(t)$  respectively.

The **transfer function** of the above network is

$$H(s) = \frac{V_o(s)}{V_i(s)} = \frac{1/sC}{R + \frac{1}{sC}}$$
$$\Rightarrow H(s) = \frac{1}{1 + sCR}$$

Substitute,  $s = j\omega$  in the above equation.

$$H(j\omega) = \frac{1}{1 + j\omega CR}$$

Magnitude of transfer function is

$$|H(j\omega)| = \frac{1}{\sqrt{1 + (\omega CR)^2}}$$

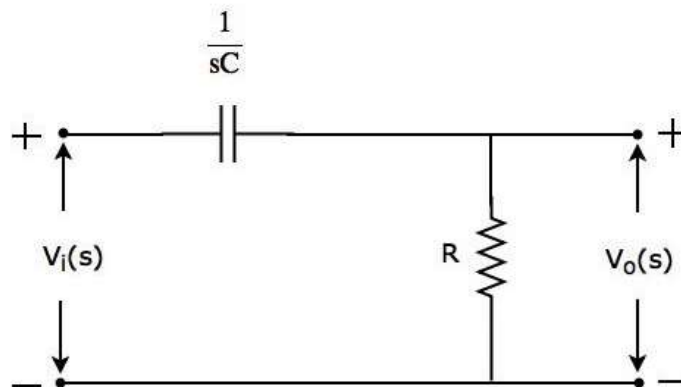
- At  $\omega = 0$ , the magnitude of transfer function is equal to 1.
- At  $\omega = \frac{1}{CR}$ , the magnitude of transfer function is equal to 0.707.
- At  $\omega = \infty$ , the magnitude of transfer function is equal to 0.

Therefore, the magnitude of transfer function of **Low pass filter** will vary from 1 to 0 as  $\omega$  varies from 0 to  $\infty$ .

## High Pass Filter

High pass filter as the name suggests, it allows (passes) only **high frequency** components. That means, it rejects (blocks) all low frequency components.

The s-domain **circuit diagram** (network) of High pass filter is shown in the following figure.



It consists of two passive elements capacitor and resistor, which are connected in **series**. Input voltage is applied across this entire combination and the output is considered as the voltage across resistor.

Here,  $V_i(s)$  and  $V_o(s)$  are the Laplace transforms of input voltage,  $v_i(t)$  and output voltage,  $v_o(t)$  respectively.

The **transfer function** of the above network is

$$H(s) = \frac{V_o(s)}{V_i(s)} = \frac{R}{R + \frac{1}{sC}}$$

$$\Rightarrow H(s) = \frac{sCR}{1 + sCR}$$

Substitute,  $s = j\omega$  in the above equation.

$$H(j\omega) = \frac{j\omega CR}{1 + j\omega CR}$$

Magnitude of transfer function is

$$|H(j\omega)| = \frac{\omega CR}{\sqrt{1 + (\omega CR)^2}}$$

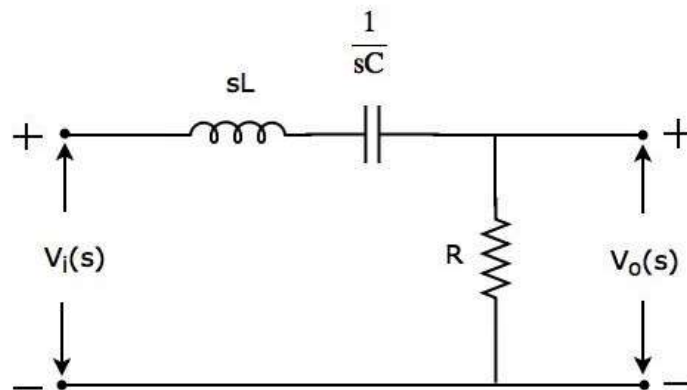
- At  $\omega = 0$ , the magnitude of transfer function is equal to 0.
- At  $\omega = \frac{1}{CR}$ , the magnitude of transfer function is equal to 0.707.
- At  $\omega = \infty$ , the magnitude of transfer function is equal to 1.

Therefore, the magnitude of transfer function of **High pass filter** will vary from 0 to 1 as  $\omega$  varies from 0 to  $\infty$ .

## Band Pass Filter

Band pass filter as the name suggests, it **allows** (passes) only **one band** of frequencies. In general, this frequency band lies in between low frequency range and high frequency range. That means, this filter rejects (blocks) both low and high frequency components.

The s-domain **circuit diagram** (network) of Band pass filter is shown in the following figure.



It consists of three passive elements inductor, capacitor and resistor, which are connected in **series**. Input voltage is applied across this entire combination and the output is considered as the voltage across resistor.

Here,  $V_i(s)$  and  $V_o(s)$  are the Laplace transforms of input voltage,  $v_i(t)$  and output voltage,  $v_o(t)$  respectively.

The **transfer function** of the above network is

$$H(s) = \frac{V_o(s)}{V_i(s)} = \frac{R}{R + \frac{1}{sC} + sL}$$

$$\Rightarrow H(s) = \frac{sCR}{s^2LC + sCR + 1}$$

Substitute  $s = j\omega$  in the above equation.

$$H(j\omega) = \frac{j\omega CR}{1 - \omega^2LC + j\omega CR}$$

Magnitude of transfer function is

$$|H(j\omega)| = \frac{\omega CR}{\sqrt{(1 - \omega^2LC)^2 + (\omega CR)^2}}$$

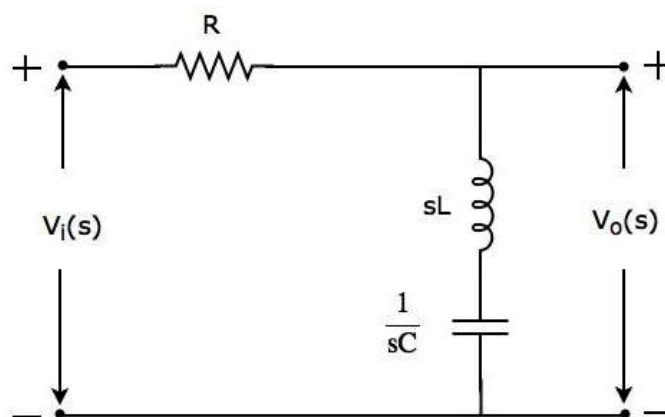
- At  $\omega = 0$ , the magnitude of transfer function is equal to 0.
- At  $\omega = \frac{1}{\sqrt{LC}}$ , the magnitude of transfer function is equal to 1.
- At  $\omega = \infty$ , the magnitude of transfer function is equal to 0.

Therefore, the magnitude of transfer function of **Band pass filter** will vary from 0 to 1 & 1 to 0 as  $\omega$  varies from 0 to  $\infty$ .

## Band Stop Filter

Band stop filter as the name suggests, it rejects (blocks) only one band of frequencies. In general, this frequency band lies in between low frequency range and high frequency range. That means, this filter allows (passes) both low and high frequency components.

The s-domain **circuit diagram** (network) of Band stop filter is shown in the following figure.



It consists of three passive elements resistor, inductor and capacitor, which are connected in **series**. Input voltage is applied across this entire combination and the output is considered as the voltage across the combination of inductor and capacitor.

Here,  $V_i(s)$  and  $V_o(s)$  are the Laplace transforms of input voltage,  $v_i(t)$  and output voltage,  $v_o(t)$  respectively.



The **transfer function** of the above network is

$$H(s) = \frac{V_o(s)}{V_i(s)} = \frac{sL + \frac{1}{sC}}{R + sL + \frac{1}{sC}}$$

$$\Rightarrow H(s) = \frac{s^2LC + 1}{s^2LC + sCR + 1}$$

Substitute,  $s = j\omega$  in the above equation.

$$H(j\omega) = \frac{1 - \omega^2LC}{1 - \omega^2LC + j\omega CR}$$

Magnitude of transfer function is

$$|H(j\omega)| = \frac{1 - \omega^2LC}{\sqrt{(1 - \omega^2LC)^2 + (\omega CR)^2}}$$

- At  $\omega = 0$ , the magnitude of transfer function is equal to 1.
- At  $\omega = \frac{1}{\sqrt{LC}}$ , the magnitude of transfer function is equal to 0.
- At  $\omega = \infty$ , the magnitude of transfer function is equal to 1.

Therefore, the magnitude of transfer function of **Band stop filter** will vary from 1 to 0 & 0 to 1 as  $\omega$  varies from 0 to  $\infty$ .